



LAUNDRY & LINEN

 **encompass**<sup>®</sup>

Better care starts with safety and comfort.

Fall 2017

[www.encompassgroup.net](http://www.encompassgroup.net)



*First in safety and comfort.*

From coordinated apparel and comforting textiles, to innovative patient care solutions that drive compliance and improve patient outcomes, we partner with our valued customers to create warm, welcoming and healing environments.

For nearly a century, Encompass has been helping hospitals create safe and comfortable environments for patients, staff, family and visitors.

Whether developing advanced hypothermia prevention products, helping hospitals reduce patient falls or creating skin-friendly incontinence pads, we strive to offer a complete line of products, services and education programs that meet the challenges our customers face every day.

Encompass is a quality provider of reusable, disposable and limited-use medical products to the healthcare industry. Our manufacturing business units Albahealth, Encompass Health Décor, Encompass Healthcare Textiles, The Pillow Factory and Techstyles are represented and supported by an experienced sales and marketing team.

*We believe that every patient, resident, caregiver and family member should feel safe and comfortable in today's healthcare environments. The way we enhance the healthcare experience is by developing innovative products that are reliably delivered and cost effective for all providers.*





## Table of Contents

<b>Introduction</b>	<b>2</b>	<b>OR Apparel &amp; Bedding</b>	<b>50</b>	<b>Hyperbaric</b>	<b>88</b>
<b>Patient Apparel</b>	<b>8</b>	Gowns .....	52	<b>Environmental Services (EVS) Support</b>	<b>90</b>
Coordinated Collections .....	9	Drapes .....	55	PerfectCLEAN® .....	91
Specialty Apparel .....	14	Wrappers .....	56	Hamper Bags .....	94
Fall Prevention .....	15	Absorbent Towels .....	57	<b>Healthcare Décor</b>	<b>96</b>
Women's Apparel .....	17	Sheeting .....	57	Curtains and Drapery .....	97
Examination Apparel .....	18	<b>Bed &amp; Bath</b>	<b>58</b>	Antimicrobial Curtains .....	98
Robes .....	19	Woven Sheeting .....	59	Classic Snap Curtains .....	99
<b>Pediatric &amp; Infant</b>	<b>20</b>	Knit Sheeting .....	61	Window Treatments .....	100
Discovery Collection .....	21	Positioners .....	65	Coordinated Design .....	101
Space Adventures/Essentials ..	23	Blankets .....	66	Shower Curtains .....	102
Adolescent Apparel .....	24	Bedsreads .....	69	<b>Appendix</b>	<b>104</b>
Infant Apparel .....	25	Mattress Pads .....	70	Pillow Care .....	104
Infant Bedding .....	26	Terry .....	71	Wash & Care Instructions .....	105
<b>Staff Apparel</b>	<b>28</b>	EMS .....	73	Index .....	106
Scrub Apparel .....	29	<b>Pillows</b>	<b>74</b>	Terms & Conditions of Sale ..	109
Labcoats .....	38	Personal Pillows .....	76		
Other PPE .....	48	Reusable Pillows .....	78		
<b>Incontinent Care</b>	<b>80</b>	<b>Incontinent Care</b>	<b>80</b>		
Construction .....	81	Patient Care Underpads .....	82		
Patient Care Underpads .....	82	General Use Underpads .....	85		
General Use Underpads .....	85	Clothing Protectors .....	86		
Clothing Protectors .....	86				

Products described in this catalog are made of imported and domestic materials.

# We believe that every patient, resident, caregiver and family member should feel safe and comfortable in today's healthcare environments.

Our mission statement above defines for us what type of products we endeavor to bring to our healthcare customers. Here are just a few highlights of those Safe & Comfortable products you will find inside this catalog.

## Fall Prevention Patient Gowns *Page 15*



We understand identifying patients at risk for falls is a top priority in hospitals today. Encompass' Fall Prevention solutions offer essential components to support a facility's program for identifying patients at risk for falls, and helping to prevent falls in the first place.

Proper fall prevention protocol and products are at the forefront of hospital care based on recommendations by industry leaders such as The Joint Commission and CMS. Our product offering provides solutions for patient identification and preventive measures and can easily be implemented into fall prevention programs customized for your facility.

## Discovery Pediatric Apparel *Page 21*



Kids want to be kids.

That's sometimes hard to do when they are in a healthcare setting, which can be scary and strange. We have developed a new line of pediatric apparel items to bring some familiarity to their setting and allow them to relax and focus on being themselves.

Introducing the Discovery Collection of pediatric apparel – four fun prints in a variety of gowns, pajama tops and coordinating pajama pants. From Northern Lights shining bright to Raining Cats and Dogs, the new Discovery collection was designed for kids ... and their caregivers.

These four prints were selected by our in-house designer, Denise Formisano, with children in mind. The Comfort Knit fabrication was carefully selected to be very comfortable while still performing to hospital and institutional laundry standards.

## PerformanceRX™ Labcoats Powered by X-Static® *Page 44*



Find world class protection, performance and comfort in a new labcoat featuring PerformanceRX™ fabric powered by X-Static® antimicrobial technology. X-Static permanently bonds textile fibers with a layer of 99.9 percent pure metallic silver. The silver layer creates an ionic shield that inhibits the growth of bacteria and fungi directly on the surface of the fabric. The result is comprehensive, permanent protection lasting the life of the garment. PerformanceRX labcoats also deliver superior comfort by regulating temperature, eliminating odors and reducing static build-up. X-Static protection you can see and feel – look for the silver stripes – and be confident you are protecting yourself and your patients!

## Patient Care Underpads *Page 80*



Moisture management is important to successful skin integrity in the acute care setting. Not all incontinent pads, whether reusable or disposable, perform the same. Incontinent pads were originally designed to protect the sheets and mattress rather than the patient. Many pads in use today still adhere to this historical design. We are now more aware of the extent that excess moisture, bunching, pressure, shearing and friction from bed linens and related incontinent products can contribute to skin breakdown and discomfort. A well-designed incontinent pad, along with good nursing care, can help to mitigate all those negative influences. Take a look at our Fusion® and DermaCare Patient Care Underpads.

## PerfectCLEAN® Cleaning System *Page 91*



Encompass offers our healthcare customers the tools to provide patients, visitors and staff with safe and clean environments. Through our partnership with UMF Corporation, we offer the PerfectCLEAN® Environmental Cleaning System, which includes mops, wipers, and other cleaning products and accessories. PerfectCLEAN soft products are made from micro-denier fibers, with built-in antimicrobial protection and can reach into invisible crevices to remove microscopic pathogens from environmental surfaces. The germs are then eliminated in your laundry cycle when using chlorine bleach. New is the PerfectCLEAN® SDX bucketless mop system – a unique and innovative high-performance hardware system that transitions heavy-duty chores to a light-duty task.



We offer quality reusable and disposable products along with clinically focused solutions to improve patient care and outcomes. The Encompass team of experienced and knowledgeable sales representatives and clinical staff work with healthcare providers to select the best patient-focused products.



## Patient Apparel

By always taking into account the importance of patient comfort and modesty, as well as the need to support and promote patient care, we create products that possess the optimum combination of style, durability and construction.

- Coordinated Patient Apparel Ensembles
- Gowns and Pajamas
- Robes and Specialty Products
- Examination Apparel



## Pediatric & Infant

### Introducing the New Discovery Collection -

Four fun ways to brighten up your young patients' lives. Our pediatric and infant apparel and bedding products create a comfortable and caring environment for your youngest patients.

- Discovery Collection
- Adolescent Apparel
- Infant Apparel and Bedding
- Pajamas and Gowns
- Examination Apparel



## Staff Apparel

Encompass provides our healthcare partners with a wide array of fashionable and functional professional apparel. Our staff apparel perfectly blends durability and value with a fashionable variety of styles and colors. We offer the widest range of lab apparel, with the most prominent brand, META Labwear.

- Synergy Staff Apparel
- Essentials Staff Apparel
- Lab Coats and Jackets
- Gowns and PPE



## OR Apparel & Bedding

Providing excellent protection, comfort, efficient use and durable cost effective performance makes choosing Encompass reusable surgical apparel and textiles the best cost-per-use decision. From basic coverage gowns to liquid-proof protective gowns, our surgical apparel and linens are designed to provide the best possible performance for their given application.

- Surgical Gowns
- Sheeting
- Towels
- Wrappers
- Drapes



## Bed and Bath

Our bed and bath collections provide you with a broad array of choices to meet your unique needs. These high-quality, durable products provide cost-effective woven and nonwoven solutions for your facility.

- Woven and Knit Bed Linens
- Positioning Aids
- Towels and Washcloths
- Bedspreads and Blankets
- Reusable and Disposable Pillows





## Pillows

Designing, building and delivering the highest quality healthcare pillows and bedding items continues to define our mission and has for more than 30 years. Our trusted products are made in the USA and include the broadest and most beneficial choices for patient care.

- Reusable Pillows
- Personal Pillows



## Incontinent Care

Encompass elevates the underpad to focus on patient skin care, not just linen protection. We understand that incontinent care is a sensitive issue and provide you with superior performing products that meet the specialized needs of the incontinent patient.

- Patient Care Underpads
- General Use Underpads
- Chair Pads
- Adult Clothing Protectors



## Hyperbaric

Encompass offers a complete line of specialty products for use in hyperbaric environments.

- Patient Gowns
- Bed Linens
- Towels and Washcloths
- Pillows



## Environmental Services Support

Maintaining a safe and clean environment is an essential component to the care of the hospitalized patient today. The PerfectCLEAN® system delivers unrivaled performance and excellent ROI through superior durability. Encompass also offers a wide range of hamper bags for your environmental services program.

- PerfectCLEAN® MicroDenier Cleaning System
- Hamper Bags



## Healthcare Décor

Our made-in-the-USA custom-designed patient room furnishings contribute to comforting and uplifting environments for patients and staff. We provide a full range of solutions including cost-effective fabrics, image-enhancing patterns and designs, and labor-saving installation and hanging options.

- Design Services
- Cubicle Curtains
- Bedcovers
- Shower Curtains



## Encompass Clinical Resources and Consulting

### What Sets Us Apart

The Encompass Clinical Resources and Consulting team are ***dedicated nurse consultants*** with extensive clinical and textile utilization experience who understand the impact of the new healthcare environment on our industry. We work with on-premise, cooperative and commercial laundries to help hospitals:

- Identify and reduce linen waste and linen loss
- Improve clinical processes associated with linen use
- Enhance patient care and promote safety and comfort

### Our Experience

- **Healthcare** consultants as opposed to **linen** consultants
- Current on HACs, HAIs, HCAHPS
- RN/BS Nursing credentialed, CLLM certified
- Comfortable interacting in the C-suite, to the Nursing Departments and the Linen Room
- Attend major medical conferences, AORN, APIC, WOCN, SPH
- Speak at major industry shows, AORN, ARTA, AHE, ALM, TRSA
- Author articles for major industry publications, as well as clinical white papers and CEU courses
- Extremely tenured, trusted by hospitals and cooperative and commercial laundry field personnel
- Supported by a multidisciplinary Clinical Advisory Council

### Key Initiatives

- **Fall Prevention:** Providing education and in-service support for customer proven product interventions that help drive down hospital incidence of falls
- **Skin Integrity:** Helping laundries protect current business and convert new business away from disposables by highlighting clinical benefits of reusables
- **Patient Warming:** Introducing BDPs to maintain "normo-thermia" in inpatient and outpatient settings, resulting in improved utilization cost and inventory control
- **Infection Prevention:** Supporting solution based product offerings to help in the fight against Healthcare Acquired Infection (HAI)
- **Industry Issues and Trends:** Impact of HACs, HAIs and HCAHPS on healthcare textiles

### Linen Management Consulting – Still our "core competency"

- Our approach is firmly rooted in data collection, analysis and accuracy audits
- Supported by ExecutorNET Linen Management Software
- Play key role as mentors/educators to commercial laundry field personnel on more advanced healthcare textile end user issues
- Documented long-term results with large IDNs





## ExecutorNET® Linen Management

When managing your facility's linen, our powerful, newly upgraded web based distribution and tracking tool delivers an exceptional level of service. Using ExecutorNET's data input and reporting features, laundry and linen managers can easily maintain detailed records of item quantities, weights, and charges for order restocking. Your personnel can use this information to pinpoint cost and usage excesses by order, department, or customer.

ExecutorNET employs restocking information in a sophisticated, easy-to-use fashion to help you get your job done faster and more efficiently. We have fashioned ExecutorNET to accommodate even the busiest, most complex facilities. Whether your facility utilizes outside linen support or has an on-premise laundry, ExecutorNET Linen Management is sure to make your daily accounting procedure quicker and easier than ever imagined.

### Key Features

- Access your information within or outside your facility
- E-mail and save reports in PDF or Microsoft Excel formats
- Linen count checks
- Secure login
- Search capabilities
- Automatic backups/software updates
- Automatic calculation of delivery requirements
- Generate reports that compare facility utilization against National Averages

### Handheld Interface

- Enjoy the convenience of a Pocket PC or tablet to reduce time and labor needed to enter restocking information and increase data accuracy.
- The handheld can be synced using your facility's wireless network or with Active Sync through a workstation.
- Data is captured in real-time with our online program.
- Improves efficiency and accuracy of data collection.



### Reporting

- Robust
- 7 Reporting Segments offering nearly 75 unique reports including:
  - Usage
  - Utilization
  - Trending
  - Reconciliation
  - National Averages Comparison
  - Graphing reports
  - Adobe PDF or Microsoft Excel formats
  - E-mail reports from website to end-user



# patient apparel

Encompass' patient apparel products are the perfect combination of style, durability and function. Our quality fabrics, superior weaves and unique designs ensure that every product we offer will maintain its brightness, color and texture – while preserving the modesty of your patients.

Through innovative products such as our fall prevention collection and feature-rich Embrace™ gowns, Encompass continues to demonstrate a commitment to providing quality solutions that promote safe, comfortable environments. With a wide array of woven and nonwoven products that are manufactured to the strictest quality standards.



## COVERAGE **C<sup>2</sup>** COMFORT

### C2™ – Comfort and Coverage Collection

Our C2™ Collection provides improved patient coverage and modesty with other added value features such as plastic snaps and 100% brushed polyester fabrics for longer lasting gowns.

- Generous sizing promotes modesty and comfort
- Durable blends or 100% polyester extend the life of the garment
- IV/Telemetry gowns feature color coded double ties for simplified identification and ease of donning
- Plastic snaps are available on several gowns

#### IV/Telemetry Gowns

CAT NO.	DESCRIPTION	PRINT/COLOR	FABRIC	TIE	SWEEP	LENGTH
45312-PATV	C2 IV/Telemetry Gowns	Blue/Cactus Atlantis	100% Brushed Poly	Side	66"	45"

#### Patient Gowns

CAT NO.	DESCRIPTION	PRINT/COLOR	FABRIC	TIE	SWEEP	LENGTH
45313-PATL	C2 Patient Gown	Blue/Mauve Atlantis	100% Brushed Poly	Side	66"	45"

See page 11 for Atlantis print patterns



### Starburst Collection

The deep background color makes this gown great for patient modesty and the 80/20 poly cotton blend adds to its longevity and ease of care.

#### IV/Telemetry Gown

CAT NO.	DESCRIPTION	PRINT/COLOR	FABRIC	TIE	SWEEP	LENGTH
45293-HCL	IV/Telemetry Blue Starburst	Starburst/Blue	80/20 pc	Side back	64"	45.5"

#### Patient Gown

CAT NO.	DESCRIPTION	PRINT/COLOR	FABRIC	TIE	SWEEP	LENGTH
45292-HCL	Patient Gown Green Starburst	Starburst/Green	80/20 pc	Side back	64"	45.5"

#### PRINT/COLOR SWATCHES



Starburst  
Blue



Starburst  
Green





## Monet Collection

The Monet™ Collection is an ensemble designed with the input of hospitals, laundries and patients. The muted tones appeal to patients, as well as complement hospital color schemes and effectively hide stains. The fabric construction processes well for laundries and provides the ultimate in comfort to the wearer.

- Features generously sized patient and IV/telemetry gowns, mother's gown, robe, exam cape, bariatric gowns and coordinating solid pajama pants
- Heavyweight cotton/polyester fabric supports warmth and durability
- Color-coded ties for quick identification and ease of use

### Patient Gowns

CAT NO.	DESCRIPTION	PRINT/COLOR	BINDING	SWEEP	LENGTH
45282-MNH	Patient Gown	Heather	Ceil	68"	50"
45257-MNH	Patient Gown, Utility	Heather	Navy	60"	45"
45257-MNBH	Patient Gown, Utility	Heather Ground	Navy	60"	45"

### IV/Telemetry Gowns

CAT NO.	DESCRIPTION	PRINT/COLOR	BINDING	SWEEP	LENGTH
45285-MNS	IV/Telemetry Gown	Seafoam	Navy	66"	49"
E45269/A/PS	IV/Telemetry Gown	Blue/Catus Atlantis		66"	45"

### Specialty Gowns

CAT NO.	DESCRIPTION	PRINT/COLOR	BINDING	SWEEP	LENGTH
45897-MNB	Mother's Gown	Blush	Rose	84"	44"
45262-MNS	5X IV/Telemetry Gown	Slate	Rose	86"	47"
45286-MNM	10X IV/Telemetry Gown	Mocha	Crimson	110"	49"

### Exam Cape

CAT NO.	DESCRIPTION	PRINT/COLOR	BINDING	SWEEP	LENGTH
45894-MNM	Exam Cape	Mocha	Navy	72"	27"

### Robe

CAT NO.	DESCRIPTION	PRINT/COLOR	BINDING	SWEEP	LENGTH
45830-MNH	Robe	Heather Ground	Navy	73"	53"

### Pajama Pants

CAT NO.	DESCRIPTION	PRINT/COLOR
45642-BL7	Pajama Pant, Large	Light Blue Solid
45642-GR9	Pajama Pant, X-Large	Green Solid
45642-K2X	Pajama Pant, 2X-Large	Khaki Solid

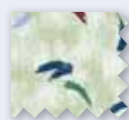


Double tie closure



Telemetry pocket with twill tape enhancement

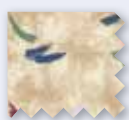
### PRINT/COLOR SWATCHES



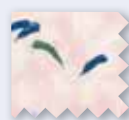
Seafoam



Heather



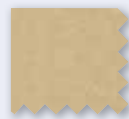
Mocha



Blush



Slate



Khaki



Light Blue



Green



Heather  
Ground (no  
brushstrokes)



Neck closures

## Atlantis/Pacifica Collection

Our Atlantis/Pacifica Collection provides a versatile offering of durable, quality patient apparel in shades of blue, red, and green for a less institutional look.

- Generous sizing promotes modesty and comfort
- Durable cotton/polyester blend supports ease of processing, extending the life of the garment
- IV/Telemetry Gowns feature color-coded double ties for simplified identification and ease of donning

### IV/Telemetry Gowns

CAT NO.	DESCRIPTION	PRINT/COLOR	SWEEP	LENGTH
45253-PAT	IV/Telemetry Gowns	Cactus Pacifica	66"	45"
45269-ATV	IV/Telemetry Gowns	Blue/Cactus Atlantis	68"	48"
E45269/A/PS	IV/Telemetry Gowns	Blue/Cactus Atlantis	66"	45"

### Patient Gowns

CAT NO.	DESCRIPTION	PRINT/COLOR	SWEEP	LENGTH
45251-MPC	Patient Gown	Mauve Pacifica	66"	45"
45254-MPC	Patient Gown	Blue/Mauve Pacifica	68"	51"
45268-ATL	Patient Gown	Blue/Mauve Atlantis	68"	48"

### Pajamas

CAT NO.	DESCRIPTION	PRINT/COLOR	SIZE
45629-403	Pajama Top, S	Heather Blue	Small
45629-405	Pajama Top, M	Heather Blue	Medium
45629-407	Pajama Top, L	Heather Blue	Large
45629-409	Pajama Top, XL	Heather Blue	X-Large
45629-402X	Pajama Top, 2XL	Heather Blue	2X-Large
45621-405	Pajama Drawstring Pant, M	Heather Blue	Medium
45621-407	Pajama Drawstring Pant, L	Heather Blue	Large
45621-409	Pajama Drawstring Pant, XL	Heather Blue	X-Large
45621-402X	Pajama Drawstring Pant, 2XL	Heather Blue	2X-Large

### PRINT/COLOR SWATCHES

Blue/  
Mauve  
AtlantisBlue/  
Cactus  
AtlantisBlue/  
Mauve  
PacificaCactus  
PacificaHeather  
Blue



## Shooting Star Collection

Our Shooting Star Collection provides the ultimate in styling, comfort, modesty, durability, and processing ease all in one coordinated patient apparel collection. The ensemble centers around patient and IV/telemetry gowns and offers options for coordinating pajamas and robes.

- Available in complementary color variations and features an attractive, pinstripe background
- Features coordinating patient gowns, pajama pants, and other accessory garments made in cotton/polyester fabric
- Generous overlaps and roomy sleeves provide enhanced comfort
- Exam cape and gowns feature color-coded double ties for simplified identification and ease of donning
- Mother's gown provides two inverted pleats to allow discreet access for nursing and convenient snap sleeves for IV access

### IV/Telemetry Gowns

CAT NO.	DESCRIPTION	PRINT/COLOR	BINDING	SWEEP	LENGTH
45285-SSB	IV/Telemetry Gown	Blue	Teal	68"	49"
45285-SSC	IV/Telemetry Gown	Crimson	Crimson	68"	49"

### Patient Gowns

CAT NO.	DESCRIPTION	PRINT/COLOR	BINDING	SWEEP	LENGTH
45282-SSB	Patient Gown	Blue	Teal	68"	49"
45282-SSC	Patient Gown	Crimson	Rose	68"	49"
45257-SSC	Patient Gown	Crimson	Rose	65"	50"

### Specialty Gowns

CAT NO.	DESCRIPTION	PRINT/COLOR	BINDING	SWEEP	LENGTH
45262-SSM	5X-L Specialty Sized Gown	Multi	Crimson	84"	48"
45286-SSM	10X-L Specialty Sized Gown	Multi	Rose	110"	49"
45897-SSP	Mother's Gown	Pink	White	68"	45"

### Pajama Pants

CAT NO.	DESCRIPTION	PRINT/COLOR
45642-SS9	Pajama Pant, X-Large	Silver Pinstripe
45642-SS2X	Pajama Pant, 2X-Large	Silver Pinstripe

### Robe

CAT NO.	DESCRIPTION	PRINT/COLOR	BINDING	SWEEP	LENGTH
45830-SSC	Robe	Multi	Teal	70"	49"

### Cape

CAT NO.	DESCRIPTION	PRINT/COLOR	BINDING	SWEEP	LENGTH
45894-SSM	Exam Cape	Multi	White	72"	27"

### PRINT/COLOR SWATCHES



Blue



Crimson



Pink



Multi



Silver Pinstripe





P59 Patient Gown, Snowflake (left)  
PG60/PS IV/Telemetry Gown, Trestle (right)

## Modessa™ Patient Gowns

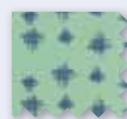
The Modessa patient gowns are part of the Revolution Linen System®, a linen handling system that consists of quality, no-fold products developed to support patient comfort, while maximizing efficiencies and reducing costs. Constructed from an ultra knit polyester fabric, the Modessa gowns offer a unique alternative in patient comfort and coverage.

CAT NO.	DESCRIPTION	PRINT	BINDING	SWEEP	LENGTH
PG59	Patient Gown	Snowflake	Navy Blue	66"	45"
PG60/PS	IV/Telemetry Gown	Trestle	Green	66"	45"

### PRINT/COLOR SWATCHES



Snowflake



Trestle



Thermoflect Adult Patient Gowns

## Thermoflect® Heat Reflective Technology® Adult Patient Gowns

CAT NO.	DESCRIPTION	SIZE	QTY/EA
5145-500	Standard Gown	Universal	25 EA
5145-500IV	IV Access Gown	X-Large	25 EA
5190-600	IV Access Gown	Small	25 EA
5145-500M	Total Access Gown	X-Large	25 EA

Thermoflect heat reflective technology gowns warm patients using simple science instead of electricity to prevent hypothermia and improve patient comfort.

For more information visit [www.thermoflect.com](http://www.thermoflect.com).



NOT FOR  
USE IN MRI



45261-5XL Patient Gown in Aztec

## Specialty Sized Apparel

- Versatile designs provide solutions for patients of varying sizes and needs
- Designs provide extended overlap to promote dignity and comfort, while allowing immediate access with minimal movement

### Patient Gowns

CAT NO.	DESCRIPTION	PRINT	BINDING	SWEEP	LENGTH
45275-3XL	Patient Gown	Blue Diamond	White	76"	47"
45261-5XL	Patient Gown	Aztec	White	87"	48"
45260-8XL	Patient Gown	Silver/Burgundy Diamonds	Plum	100"	48"
45289-10XL	Patient Gown	Teal Diamond	Navy	110"	51"

### IV/Telemetry Gowns

CAT NO.	DESCRIPTION	PRINT	BINDING	SWEEP	LENGTH
45276-3XL	IV/Telemetry Gowns	Blue Diamond	Navy	76"	47"
45262-5XL	IV/Telemetry Gowns	Aztec	Navy	87"	48"
45286-10XL	IV/Telemetry Gowns	Khaki Fleur-de-lis	White	110"	51"



45310-BIS shown left (front view)  
45310-BIS shown right (back view)

## Mental Health Gowns

- Mental health gowns offer a safe, comfortable alternative for high-risk patients
- Snap closures support the modesty and dignity of the patient, while breakaway snap closures reduce the risk of the garment being used by suicide-prone patients
- Available in a print or solid to support the preferences of facilities desiring patient identification alternatives

CAT NO.	DESCRIPTION	PRINT	BINDING	SWEEP	LENGTH
45310-BIS	Mental Health Patient Gown	Blue Stripe Fleur-de-lis	White	68"	49"
45311-HTR	Mental Health Patient Gown	Hunter Green	White	68"	49"

### PRINT/COLOR SWATCHES



Aztec

Khaki  
Fleur-de-lisSilver/  
Burgundy  
DiamondsBlue  
DiamondTeal  
DiamondBlue Stripe  
Fleur-de-lisHunter  
Green



# fall prevention

Encompass understands identifying patients at risk for falls is a top priority in hospitals today. Encompass' Fall Prevention solutions offer essential components to support a facility's program for identifying patients at risk for falls, and helping to prevent falls in the first place.

Proper fall prevention protocol and products are at the forefront of hospital care based on recommendations by industry leaders such as The Joint Commission and CMS. Our product offering provides solutions for patient identification and preventive measures and can easily be implemented into fall prevention programs customized for your facility.





## Falling Leaves Patient Gowns

The Falling Leaves patient gowns assist with the day-to-day challenge of supporting simplified identification of patients to complement any fall prevention program.

- Features soft, durable 55/45 cotton/poly blend fabric
- Sized to provide maximum comfort, while color-coded ties support simplified identification and ease in donning
- Falling Leaves print provides modesty and dignity for the patient while serving as a visual indicator to medical professionals
- Available by the dozen

CAT NO.	DESCRIPTION	PRINT	BINDING	SWEEP	LENGTH
45253-FALL	IV/Telemetry Gown	Falling Leaves	White	66"	45"
45286-FALL	10XL IV/Telemetry Gown	Falling Leaves	Ceil	110"	51"

## 100% Polyester Fall Prevention Gowns

The fall gowns provide patient coverage and modesty with other added value features such as 100% brushed polyester fabrics for longer lasting gowns.

- Generous sizing promotes modesty and comfort
- Durable blends or 100% polyester extend the life of the garment
- IV/Telemetry gowns feature color coded double ties for simplified identification and ease of donning

CAT NO.	DESCRIPTION	PRINT	BINDING	SWEEP	LENGTH
45256-FYXL	XL IV/ Telemetry Gown	Yellow Leaves	Self	66"	45"
45256-FY5XL	5XL IV/ Telemetry Gown	Yellow Leaves	White	87"	45"
45256-FY10X	10L IV/ Telemetry Gown	Yellow Leaves	Yellow	110"	45"

### PRINT/COLOR SWATCHES



*Falling  
Leaves*



*Yellow  
Leaves*



45288-ROSL Nursing Mother's Gown

## Nursing Mother's Apparel

- Gown design features front panels that discreetly conceal openings at the chest to provide easy accessibility for nursing
- Soft, opaque cotton/poly blend provides modesty and comfort

CAT NO.	DESCRIPTION	PRINT	SWEEP	LENGTH
45288-ROSL	Nursing Mother Gown	Vintage Rose	83"	43"
45897-VROS	Nursing Mother IV Gown	Vintage Rose	74"	41"



45891-107 Impressions Exam Jacket

## Mammography Apparel

- Jacket features heavyweight cotton/poly apparel grade fabric with inside/outside ties
- Cape features soft, opaque 55/45 cotton/poly broadcloth and dual snap closure
- One size fits most

CAT NO.	DESCRIPTION	PRINT	SWEEP	LENGTH
45891-107	Exam Jacket	Wild Plum	60"	30"
45893-MCP	Mammography Cape	Vintage Rose	65"	23"
45898-RA7	Mammography Jacket	Solid/Raspberry	60 1/2"	29"

### PRINT/COLOR SWATCHES

Vintage  
Rose

Wild Plum

Solid/  
Raspberry



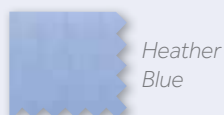
45890-TAH Three-Armhole Examination Gown

## Three-Armhole Examination Gowns

- Features three armholes, making them easy to slip on and off during exams
- Wraparound style ensures complete coverage

CAT NO.	PRINT	BLEND	SWEEP	LENGTH
45890-TAH	Heather Blue	55/45 Blend	71"	41"

### PRINT/COLOR SWATCHES



## Nonwoven Patient Gowns and Robes

- Designed for patient modesty
- Soft and comfortable
- Bariatric sizes available

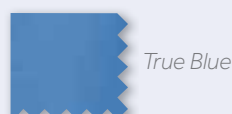
### Gowns

CAT NO.	MATERIAL	SIZE	COLOR	QTY/CASE
45790-WLAG	SBPP	Small Adult	True Blue	100 EA
45418	SMS	Universal	Dark Blue	50 EA
45418-001	SBPP	Universal	True Blue	50 EA
45418-CLU	SBPP	Universal	True Blue	50 EA
45418-IVX	SBPP	Universal	True Blue	50 EA
45419-100	SBPP	2X to 4X-Large	True Blue	12 EA
45419-101	SBPP	5X to 7X-Large	True Blue	12 EA
45419-102	SBPP	8X to 10X-Large	True Blue	12 EA

### Robes

CAT NO.	MATERIAL	SIZE	COLOR	QTY/CASE
45415-010	SBPP	Small/Medium	True Blue	25 EA
45415-020	SBPP	Large/X-Large	True Blue	25 EA
45415-120	SMS	Large/X-Large	Wine	25 EA

### PRINT/COLOR SWATCHES



45419-100 Gown, (left) and 45418 Gown (right)





45810 Seersucker Robe shown in Blue/White Stripe (left) and 45810-110 Terry Robe shown in White (right)

## Seersucker Robes

- Features include mock shawl collar, two patch pockets and long sleeves
- Cotton/polyester blue and white seersucker fabric blends offer subtle texture, heavy weight and maximum opacity

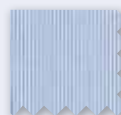
CAT NO.	DESCRIPTION	PRINT	SWEEP	LENGTH	SIZE
45810-107	Robe Seersucker	Blue/White Stripe	64"	49"	Large
45810-109	Robe Seersucker	Blue/White Stripe	68"	50"	X-Large

## Terry Robes

- Kimono-style robe features top stitching and two patch pockets
- Custom embroidery available
- One size fits all
- Available individually or by the dozen

CAT NO.	DESCRIPTION	PRINT	SWEEP	LENGTH	SIZE
45820-110	Robe Terry White	White	62"	48"	Full Length
45820-117	Robe Terry Pink	Pink	62"	48"	Full Length

### PRINT/COLOR SWATCHES



Blue/White  
Stripe



White



Pink



# pediatric & infant

Kids want to be kids.

That's sometimes hard to do when they are in a healthcare setting, which can be scary and strange. Because we believe that everyone should feel safe and comfortable in their healthcare environment, we have developed a new line of pediatric apparel items to bring some familiarity back to their setting and allowing them to relax and focus on being themselves.



Introducing the Discovery Collection of pediatric apparel – four fun prints in a variety of gowns, pajama tops and coordinating pajama pants. From Northern Lights shining bright to Raining Cats and Dogs, the new Discovery collection was designed for kids...and their caregivers.

## Uncover All That the Discovery Collection Offers

- The 100% comfort knit construction is super comfortable and breathable for the wearer.
- The Discovery Collection gowns and PJs were designed for ages 1 up through 12 years.
- The easy color coordination within the set and with the solid color PJ Pants allow the caregiver to easily grab the correct size.
- The vibrant colors in the prints are colorfast, designed to look fresh over their lifetime.
- The polyester construction is durable for longevity, and also allows for faster drying time in the laundry.

### 100% Polyester Comfort Knit

Allows for faster dry time for the laundry and better comfort and breathability for the wearer

### Durability

Polyester construction allows for product longevity

### Colorfastness

Designed with multiple uses in mind in order for the vibrant colors to look fresh time and time again

### Color Coordinated

Discovery was designed for ages 1 year up to 12 years of age. Easy color coordination allows caregiver to easily grab the correct size



## The Discovery Universe of Prints



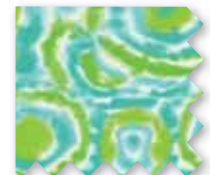
Size 1 to 2  
*Galileo Guardians*



Size 3 to 4  
*Raining Cats and Dogs*



Size 6 to 8  
*Stargazing*



Size 9 to 12  
*Northern Lights*





## A Variety of Styles and Prints for Your Every Need

All garments are 100% polyester comfort knit construction and meet all federal flammability regulations for children's sleepwear.

### Patient Gowns

CAT NO.	DESCRIPTION	COLOR/PRINT
45771-102	Patient Gown Pediatric "Discovery" Size 1-2	Galileo Guardians
45771-304	Patient Gown Pediatric "Discovery" Size 3-4	Raining Cats and Dogs
45771-608	Patient Gown Pediatric "Discovery" Size 6-8	Stargazing
45771-912	Patient Gown Pediatric "Discovery" Size 9-12	Northern Lights

### IV Gowns

CAT NO.	DESCRIPTION	COLOR/PRINT
45772-102	IV Gown Pediatric "Discovery" Size 1-2	Galileo Guardians
45772-304	IV Gown Pediatric "Discovery" Size 3-4	Raining Cats and Dogs
45772-608	IV Gown Pediatric "Discovery" Size 6-8	Stargazing
45772-912	IV Gown Pediatric "Discovery" Size 9-12	Northern Lights

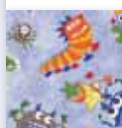
### Pajama Tops

CAT NO.	DESCRIPTION	COLOR/PRINT
45773-102	Top PJ Pediatric "Discovery" Size 1-2	Galileo Guardians
45773-304	Top PJ Pediatric "Discovery" Size 3-4	Raining Cats and Dogs
45773-608	Top PJ Pediatric "Discovery" Size 6-8	Stargazing
45773-912	Top PJ Pediatric "Discovery" Size 9-12	Northern Lights

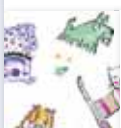
### Pajama Pants

CAT NO.	DESCRIPTION	COLOR/PRINT	SIZES
45764-___	Pant PJ Pediatric Drawstring	Solid Colors	1-2 to 9-12
45754-___	Pant PJ Pediatric Elastic Waist	Solid Colors	1-2 to 9-12

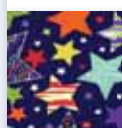
### SIZE CODES

**102**


Size 1 to 2  
Galileo  
Guardians  
with White  
pant 102

**304**


Size 3 to 4  
Raining Cats  
and Dogs with  
Purple pant 304

**608**


Size 6 to 8  
Stargazing  
with Blue  
pant 608

**912**


Size 9 to 12  
Northern Lights  
with Royal Blue  
pant 912



45751-304 Koalas  
in Space Gown

45751-912  
Kids in Space Gown

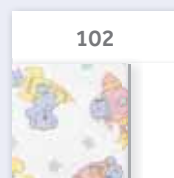
## Space Adventures



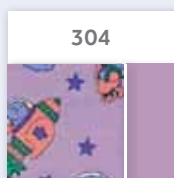
- Our Space Adventures line features fun and imaginative prints of koalas and kids in space
- With a soft t-shirt feel, our comfort knit fabric displays these vibrant designs on solid color backgrounds that coordinate with solid pajama pants
- All garments are 100% polyester and meet all federal flammability regulations for children's sleepwear

CAT NO. style# - size code	DESCRIPTION	COLOR/PRINT	SIZE
45751-___	Regular Gown	Space Adventures	1-2 to 9-12
45752-___	IV Gown	Space Adventures	1-2 to 9-12
45753-___	Pajama Top	Space Adventures	1-2 to 9-12
45754-___	Pajama Pants	Solid Colors	1-2 to 9-12

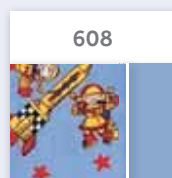
### SIZE CODES



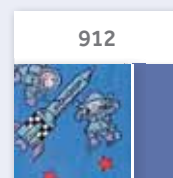
Size 1 to 2  
White/Koalas  
in Space with  
White pant  
102



Size 3 to 4  
Purple/Koalas  
in Space with  
Purple pant  
304



Size 6 to 8  
Sky Blue/Kids  
in Space with  
Blue pant  
608



Size 9 to 12  
Royal Blue/Kids  
in Space with  
Royal Blue pant  
912



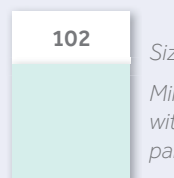
45789-304 Pajama Top with  
45788-304 Pajama Pant in Sunflower Yellow

## Essentials Flannel Weight Pediatric Apparel

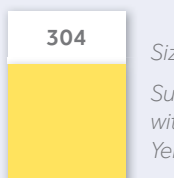
- With cheerful solids in a soft and warm flannel fabric, our Essentials Flannel is a great alternative for the most precious of patients
- Each solid color represents a specific size for simplified sorting and identification
- All garments are 100% polyester and meet all federal flammability regulations for children's sleepwear

CAT NO. style# - size code	DESCRIPTION	COLOR	SIZE
45784-___	Gown	Solid Colors	1-2 to 9-12
45799-___	IV Gown	Solid Colors	1-2 to 9-12
45789-___	Pajama Top	Solid Colors	1-2 to 9-12
45788-___	Pajama Pants	Solid Colors	1-2 to 9-12

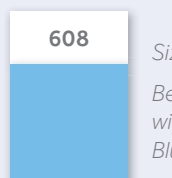
### SIZE CODES



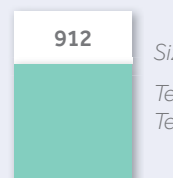
Size 1 to 2  
Mint Green  
with Mint Green  
pant 102



Size 3 to 4  
Sunflower Yellow  
with Sunflower  
Yellow pant 304



Size 6 to 8  
Beach Blue  
with Beach  
Blue pant 608



Size 9 to 12  
Teal with  
Teal pant 912



45263-ADL  
Adolescent IV Gown

## Galaxy Collection

- Perfectly sized for adolescent patients
- Comfortable and durable 50/50 cotton/polyester blend fabric
- Available in standard gown, IV gown or pajamas

CAT NO.	DESCRIPTION	PRINT	SWEEP	LENGTH	QTY/EA
45264-ADL	Adolescent Patient Gown	Purple	49"	39"	12 EA
45263-ADL	Adolescent IV Gown	Galaxy Print	49"	39"	12 EA
45638-ADF	Adolescent Pajama Top	Galaxy Print	N/A	N/A	12 EA
45637-ADF	Adolescent Pajama Pant	Galaxy Print	N/A	N/A	12 EA
45634-ADL	Adolescent Pajama Pant	Purple	N/A	N/A	12 EA

### PRINT/COLOR SWATCHES



Purple



Galaxy  
Print



45754CF-608  
Trip-Free PJ Pants



## Essentials™ Trip-Free Pediatric PJ Pants

- Cuffs at Leg Opening Aids in fall prevention. Fits tall or shorter kids who wear the same waist size.
- 100% Comfort Knit Polyester Better comfort and breathability for the wearer; energy-efficient and durable for the laundry.
- Colorfast Dyes The vibrant colors will look fresh for the life of the garment.
- Brushed Fabric Especially designed to give maximum comfort to kids' softer skin.
- All garments are 100% polyester comfort knit construction and meet all federal flammability regulations for children's sleepwear.

CAT NO.	DESCRIPTION	SIZE	COLOR
45754CF-102	Pant PJ Pediatric w/Cuff Solid	1-2	Solid White
45754CF-304	Pant PJ Pediatric w/Cuff Solid	3-4	Solid Purple
45754CF-608	Pant PJ Pediatric w/Cuff Solid	6-8	Solid Sky Blue
45754CF-912	Pant PJ Pediatric w/Cuff Solid	9-12	Solid Royal





Assorted Baby Boggans

## Baby Boggans®

CAT NO.	DESCRIPTION	SIZE	COLOR	QTY/CS
80001	Single-Ply	4" x 6"	Pink/White	200 EA
80002	Single-Ply	4" x 6"	Blue/White	200 EA
80003	Single-Ply	4" x 6"	White	200 EA
80004	Single-Ply	4" x 6"	Pink/Blue/White	200 EA
80005	Double-Ply	4" x 5"	Pink/Blue/White	350 EA
80006	Double-Ply	4" x 5"	Pink/Blue/White	160 EA
80008	Double-Ply	3" x 5¼"	Pink/Blue/White	500 EA
80009	Double-Ply	3½" x 5¼"	Pink/Blue/White	250 EA
80015	Single-Ply	4" x 6"	Pink/Blue/White	500 EA

### PRINT/COLOR SWATCHES



46355-612 Infant Shirt

## Infant Shirts

- Soft absorbent 100% cotton
- Offered in long and short sleeve, and gripper styles

CAT NO.	DESCRIPTION	SIZE	MATERIAL
46300-611	Infant Shirt, Short Sleeve, Slipover	3 Month	55 Cotton/45 Poly
46300-612	Infant Shirt, Short Sleeve, Slipover	6 Month	55 Cotton/45 Poly
46300-613	Infant Shirt, Short Sleeve, Slipover	12 Month	55 Cotton/45 Poly
46350-611	Infant Shirt, Long Sleeve, Slipover	3 Month	55 Cotton/45 Poly
46350-612	Infant Shirt, Long Sleeve, Slipover	6 Month	55 Cotton/45 Poly
46355-611	Infant Shirt, Long Sleeve, Gripper Slide Closure	3 Month	55 Cotton/45 Poly
46355-612	Infant Shirt, Long Sleeve, Gripper Slide Closure	6 Month	55 Cotton/45 Poly

## Infant Gowns

- Flame resistant 100% soft polyester
- Snap front styles

CAT NO.	DESCRIPTION	PRINT	SIZE	MATERIAL
911FR	Infant Gown, 3 Snap Closure at Neck/Pullover	Zebra/Giraffe	Up to 12 Months	100% Polyester
45770-CATS	Gown, IV, Infant X-Small	Raining Cats and Dogs	Up to 6 Months	100% Polyester

### PRINT/COLOR SWATCHES



911FR Infant Gown



## PRINT/COLOR SWATCHES



Raining  
Cats and  
Dogs

## Infant Gown

All garments are 100% polyester comfort knit construction and meet all federal flammability regulations for children's sleepwear.

CAT NO.	DESCRIPTION	COLOR/PRINT
45770-CATS	Gown IV Infant X-Small	Raining Cats and Dogs

## Baby Blankets

CAT NO.	DESCRIPTION	COLOR/PRINT
49341-D32	Baby Blanket 32" x 32" Discovery	Raining Cats and Dogs
49341-D36	Baby Blanket 36" x 36" Discovery	Raining Cats and Dogs



Assorted Receiving Blankets

## Essentials Receiving Blankets

CAT NO.	COLOR/PRINT	SIZE	BLEND	WEIGHT/EA
49335-602	Pink & Blue Border Stripes	30" x 40"	88 Cotton/12 Poly	0.27 LB
49337-ANG	Pink & Blue Pin Stripes	36" x 36"	80 Cotton/20 Poly	0.44 LB
49311-WHI	Solid White Thermal Knit	30" x 40"	100% Cotton	0.40 LB

## Infant Sheets

CAT NO.	COLOR/PRINT	SIZE	BLEND	WEIGHT/EA
49452-32B	SleepKnit Crib Sheet	28" x 60" x 6"	60/40 Cotton/Poly	0.60 LB
49452-BSW	UltraKnit Crib Sheet	30" x 58" x 5"	100% Poly	0.85 LB
49452-BS2	Knit Bassinet Sheet	13" x 29"	60/40 Cotton/Poly	0.35 LB
49452-BS3	Knit Bassinet Sheet	21" x 28"	60/40 Cotton/Poly	0.35 LB
49401-010	Knit Bassinet Sheet	12" x 29"	100% Cotton	0.15 LB



100% Cotton Infant Diapers

## 100% Cotton Infant Diapers

CAT NO.	DESCRIPTION	SIZE	PANELS	MATERIAL
46370-040	Pre-folded Infant Diaper	14" x 21"	2/3/2	Bird's Eye
46345-040	Newborn Pre-folded Diaper	12" x 16"	2/3/2	Twill
46360-030	Merit Flat Infant Diaper	27" x 27"	Flat	Bird's Eye



46150-053 Starlight  
Nonwoven Blanket/Sheet  
and 46150-063 Starlight  
Nonwoven Bassinet Sheet

## Nonwoven Pediatric Bedding

CAT NO.	DESCRIPTION	MATERIAL	SIZE	COLOR	QTY/CS
46151-010	Bunting	SBPP	Newborn	Print	50 EA
46150-051	Blanket/Sheet	SBPP	28" x 36"	White	150 EA
46150-053	Blanket/Sheet	SBPP	28" x 36"	Print	150 EA
46150-061	Bassinet Sheet, Fitted	SBPP	13" x 27"	White	200 EA
46150-063	Bassinet Sheet, Fitted	SBPP	13" x 27"	Print	300 EA
46150-065	Bassinet Sheet, Elastic	HD SBPP	13" x 27"	White	200 EA
46150-066	Bassinet Sheet, Elastic	HD SBPP	13" x 27"	Print	200 EA
46150-060	Bassinet Sheet, Fitted	HD SBPP	14" x 28"	Print	200 EA

## New Colored Knit Sheets

CAT NO.	DESCRIPTION	SIZE	BLEND	WEIGHT
49452-CSBLU	Knit Crib Sheet	22" x 35" x 3"	100% Polyester	0.35 LB
49452-CSGRN	Knit Crib Sheet	22" x 35" x 3"	100% Polyester	0.35 LB
49452-CSPIN	Knit Crib Sheet	22" x 35" x 3"	100% Polyester	0.35 LB
49452-CS1BLU	Knit Crib Sheet	30" x 40" x 5"	100% Polyester	0.54 LB
49452-CS1GRN	Knit Crib Sheet	30" x 40" x 5"	100% Polyester	0.54 LB
49452-CS1PIN	Knit Crib Sheet	30" x 40" x 5"	100% Polyester	0.54 LB
49452-CS2BLU	Knit Crib Sheet	30" x 58" x 5"	100% Polyester	0.85 LB
49452-CS2GRN	Knit Crib Sheet	30" x 58" x 5"	100% Polyester	0.85 LB
49452-CS2PIN	Knit Crib Sheet	30" x 58" x 5"	100% Polyester	0.85 LB

### PRINT/COLOR SWATCHES



Pink



Green



Blue





# staff apparel

Encompass offers an extensive line of comfort-focused staff apparel. From stylish scrub apparel to the best labcoats in the industry, we feature high quality designs for virtually every point of care within your facility.

# essentials

Essentials™ staff apparel is made from a lightweight yet durable cotton/polyester fabric and is designed for comfort and breathability at a cost effective price.

Additionally, to ensure colorfastness wash after wash, Essentials professional apparel is disperse vat dyed. Essentials are available in two color code systems to meet your size identification needs. Reference color code charts below.



Color-coded neck example

Color coding is an important feature in today's institutional professional apparel. Identifying garment size by easy-to-read color coding helps improve efficiency and eliminate confusion in the sorting, laundering and distribution process and helps staff members easily identify the right size to wear. Encompass has long incorporated color coding into our apparel and you will find our color coding system in both our Synergy and Essentials professional apparel lines.

## ENCOMPASS (-1) COLOR CODING

<b>XS</b> Yellow	<b>L</b> Jade	<b>3XL</b> Ash Gray
<b>S</b> Ceil	<b>XL</b> Khaki	<b>4XL</b> Peach
<b>M</b> Wild Plum	<b>2XL</b> Misty Green	<b>5XL</b> South Sea Green

Also, we recognize the popularity of other institutional color coding systems and help to eliminate conversion difficulty by offering a universal color coding system. In order to meet the color coding needs of all our customers, we offer Universal color coding based on traditional institutional laundering systems as an option in our Essentials professional apparel line.

## UNIVERSAL (-2) COLOR CODING

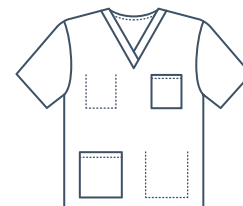
<b>XS</b> South Sea Green	<b>L</b> White	<b>3XL</b> Ceil
<b>S</b> Yellow	<b>XL</b> Papaya	<b>4XL</b> Misty
<b>M</b> Khaki	<b>2XL</b> Jade	<b>5XL</b> Red



Essentials Unisex V-Neck Tunic  
(46877 – Navy)

## Essentials™ Unisex V-Neck Tunic with Lower Pocket

- Reversible top with set-in sleeves
- Left breast pocket
- Lower right hip pocket with scissors tape
- Size code printed color-coded neck binding
- Sizes: XS-5XL



46876

## Essentials Unisex V-Neck Tunic

- Reversible top with set-in sleeves
- Left breast pocket
- Size code printed color-coded neck binding
- Sizes: XS-5XL



46877

### Encompass Color Code Series

STYLE #	DESCRIPTION	COLORS
46876-1	Essentials Unisex V-Neck Tunic with Lower Pocket	Available in all -1 colors listed below.
46877-1	Essentials Unisex V-Neck Tunic	Available in all -1 colors listed below, except Teal.

### Universal Color Code Series

STYLE #	DESCRIPTION	COLORS
46876-2	Essentials Unisex V-Neck Tunic with Lower Pocket	Available in all -2 colors listed below.
46877-2	Essentials Unisex V-Neck Tunic	Available in all -2 colors listed below.

### COLOR SWATCHES & CODES

ENCOMPASS (-1) SERIES	<b>11</b> Ceil	<b>12</b> Misty Green	<b>13</b> Jade Green	<b>1L</b> Teal	<b>1N</b> Navy
UNIVERSAL (-2) SERIES	<b>21</b> Ceil	<b>22</b> Misty Green	<b>23</b> Jade Green	<b>2L</b> Teal	<b>2N</b> Navy

HOW TO ORDER: STYLE # + **10** COLOR CODE + **1** SIZE CODE = CATALOG NUMBER

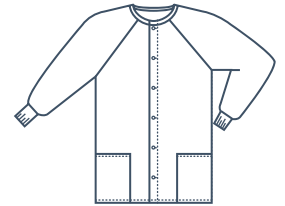




Essentials Unisex Warm-up Jacket  
(46879 – Ceil)

## Essentials™ Unisex Warm-up Jacket

- Raglan jacket with snap front
- Scissors holder in right pocket
- Can be used with Encompass or Universal color-coded apparel
- Two lower pockets
- Coordinating knit cuffs
- Sizes: XS-5XL



46879

STYLE #	DESCRIPTION	COLORS
46879	Essentials Unisex Warm-Up Jacket	Available in all -2 colors.



Essentials Unisex Drawstring Pant  
(46878 – Misty Green)

## Essentials Unisex Drawstring Pant

- Reversible
- Color-coded web belt
- Right hip pocket
- Sizes: XS-5XL



46878

### Encompass Color Code Series

STYLE #	DESCRIPTION	COLORS
46878-1	Essentials Unisex Drawstring Pant	Available in all -1 colors listed at left.

### Universal Color Code Series

STYLE #	DESCRIPTION	COLORS
46878-2	Essentials Unisex Drawstring Pant	Available in all -2 colors listed at left.

### SIZE CODES

1

XS

3

Small

5

Medium

7

Large

9

XL

2X

2XL

3X

3XL

4X

4XL

5X

5XL

HOW TO ORDER: STYLE # + 10 COLOR CODE + 1 SIZE CODE = CATALOG NUMBER



**synergy** 

Synergy™ professional apparel perfectly blends durability and value with a fashionable variety of styles and colors. All styles are made of Synergy fabric, a durable blend that is comfortable, opaque and quick drying. Synergy fabric is a polyester/cotton blend that offers minimal shrinkage and is fade and wrinkle resistant. Additionally, a stain release finish has been added to enhance performance and keep the fabric looking fresh and new. The features of Synergy professional apparel make it an ideal choice when laundering and processing performance are your number one priority.



Synergy V-Neck Option Tunic  
(46846 - Teal & Imperial Purple)



Synergy Unisex V-Neck Tunic/ Drawstring Pant  
(46858 and 46856–Navy)

## Reversible, Unisex V-Neck Option Tunic

- Reversible
- Wearer can select left breast pocket or breast and lower pocket combination
- Color-coded neck binding
- Sizes XS-5XL



46846

## Synergy Unisex Drawstring Pant

- Reversible
- Left hip pocket
- Color-coded webbed belt
- Sizes: XS-5XL



46858

STYLE #	DESCRIPTION	COLORS
46846	Synergy Unisex Options Tunic	Available in Ceil, Hunter, Misty, Regatta Blue, Sapphire Blue, Sunset Maroon, and Navy
46856	Synergy Unisex V-Neck Tunic	Available in all colors listed below.
46858	Synergy Unisex Drawstring Pant	Available in all colors listed below.

### COLOR SWATCHES & CODES

<b>10</b> White	<b>13</b> Jade Green	<b>SB</b> Sapphire Blue	<b>SG</b> Silver Gray	<b>RB</b> Regatta Blue
<b>11</b> Ceil	<b>1L</b> Teal	<b>HT</b> Hunter	<b>DS</b> Deep Sea Green	<b>PT</b> Pewter
<b>12</b> Misty Green	<b>1N</b> Navy	<b>SM</b> Sunset Maroon	<b>IP</b> Imperial Purple	<b>CH</b> Charcoal

### SIZE CODES

<b>1</b> XS	<b>3</b> Small	<b>5</b> Medium	<b>7</b> Large	<b>9</b> XL
<b>2X</b> 2XL	<b>3X</b> 3XL	<b>4X</b> 4XL	<b>5X</b> 5XL	

HOW TO ORDER: STYLE # + **10** COLOR CODE + **1** SIZE CODE = CATALOG NUMBER



Synergy Unisex Warm-up Jacket  
(46859 – Imperial Purple)

## Synergy™ Unisex Warm-up Jacket

- Raglan sleeves
- Two lower hip pockets
- Scissors holder in right pocket
- Coordinating knit cuffs
- Snap front
- Color-coded tab for easy identification
- Sizes: XS-5XL



46859

## Synergy Unisex V-Neck Tunic

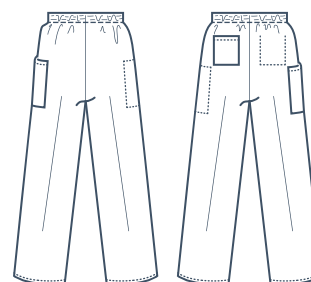
- Reversible
- Left breast pocket
- Reinforced neck placket
- Color-coded neck binding
- Sizes: XS-5XL



46856

## Synergy Elastic Waist Cargo Pant

- Reversible
- 1½" no-roll elastic waist
- Left hip pocket and right cargo pocket
- Color-coded thread on waistband
- Sizes: XS-5XL



46857

STYLE #	DESCRIPTION	COLORS
46859	Synergy Unisex Warm-Up Jacket	Available in all colors listed below.
46856	Synergy Unisex V-Neck Tunic	Available in all colors listed below.
46857	Synergy Elastic Waist Cargo Pant	Available in all colors listed below.

### COLOR SWATCHES & CODES

<b>10</b> White	<b>13</b> Jade Green	<b>SB</b> Sapphire Blue	<b>SG</b> Silver Gray	<b>RB</b> Regatta Blue
<b>11</b> Ceil	<b>1L</b> Teal	<b>HT</b> Hunter	<b>DS</b> Deep Sea Green	<b>PT</b> Pewter
<b>12</b> Misty Green	<b>1N</b> Navy	<b>SM</b> Sunset Maroon	<b>IP</b> Imperial Purple	<b>CH</b> Charcoal

HOW TO ORDER: STYLE # + **10** COLOR CODE + **1** SIZE CODE = CATALOG NUMBER

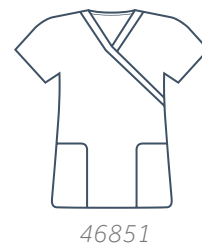




Synergy Women's Crossover Tunic  
(46851 – Teal)

## Synergy™ Women's Crossover Tunic

- Pullover style with secured overlap neck
- Two lower hip pockets
- Scissors holder in right pocket
- Color-coded tab for easy identification
- Sizes: XS-5XL



Synergy Women's Snap-V Tunic  
(46853 – Hunter)

## Synergy Women's Snap-V Tunic

- Snap front
- Two lower hip pockets
- Scissors holder in right pocket
- Color-coded tab for easy identification
- Sizes: XS-5XL



STYLE #	DESCRIPTION	COLORS
46851	Synergy Women's Crossover Tunic	Available in all colors listed at left.
46853	Synergy Women's Snap-V Tunic	Available in all colors listed at left.

### SIZE CODES

1 XS

3 Small

5 Medium

7 Large

9 XL

2X 2XL

3X 3XL

4X 4XL

5X 5XL

HOW TO ORDER: STYLE # + 10 COLOR CODE + 1 SIZE CODE = CATALOG NUMBER



## Synergy™ Long-Sleeve Reversible Unisex Scrub Top

- Meets the needs of hospital staff that need or desire long sleeves to cover bare arms
- Reversible design
- Breast pocket on one side or two hip pockets when reversed
- Color-coded neckline
- Sizes: XS-5XL



## Synergy Unisex Crossover Top

- Pullover style with secured overlap neck
- Two lower hip pockets
- Scissors holder in right pocket
- Color-coded tab for easy identification
- Sizes: XS-5XL



## Synergy Unisex Drawstring Cargo Pant

- Reversible
- Left hip pocket and right cargo pocket
- Color-coded tab for easy identification
- Sizes: XS-5XL

STYLE #	DESCRIPTION	COLOR
46831	Synergy Unisex V-Neck Long-Sleeve Top	Available in all colors listed below
46890	Synergy Unisex Crossover Top	Available in all colors listed below
46847	Synergy Unisex Drawstring Cargo Pant	Available in all colors listed below

### COLOR SWATCHES & CODES

<b>10</b> White	<b>13</b> Jade Green	<b>SB</b> Sapphire Blue	<b>SG</b> Silver Gray	<b>RB</b> Regatta Blue
<b>11</b> Ceil	<b>1L</b> Teal	<b>HT</b> Hunter	<b>DS</b> Deep Sea Green	<b>PT</b> Pewter
<b>12</b> Misty Green	<b>1N</b> Navy	<b>SM</b> Sunset Maroon	<b>IP</b> Imperial Purple	<b>CH</b> Charcoal

HOW TO ORDER: STYLE # + **10** COLOR CODE + **1** SIZE CODE = CATALOG NUMBER



## Sizing

### Encompass Women's Essentials™ Professional Apparel

SIZE / SIZE CODE	S / 3	M / 5	L / 7	XL / 9	2XL / 2X	3XL / 3X	4XL / 4X	5XL / 5X
Bust	35-38	39-41	42-45	46-49	50-53	54-57	58-61	62-65
Waist	24-26	27-29	30-33	34-37	38-41	42-44	45-47	48-51
Hips	33½-36½	37½-39½	40½-42½	43½-45½	46½-48½	49½-51½	52½-54½	56½-58½
Inseam	31	31½	32	32½	33	33½	34	34½

### Encompass Women's Synergy™ Professional Apparel

SIZE / SIZE CODE	S / 3	M / 5	L / 7	XL / 9	2XL / 2X	3XL / 3X	4XL / 4X	5XL / 5X
Bust	35-38	39-41	42-45	46-49	50-53	54-57	58-61	62-65
Waist	25-27	28-30	31-34	35-38	39-42	43-45	46-48	49-52
Hips	36-39	40-42	43-45	46-49	50-53	54-57	58-62	63-66
Inseam	30¾	30¾	31¼	31¾	32¾	33¼	33¾	34¼

### Encompass Unisex/Men's Professional Apparel

SIZE / SIZE CODE	S / 3	M / 5	L / 7	XL / 9	2XL / 2X	3XL / 3X	4XL / 4X	5XL / 5X
Chest	36-39	40-43	44-46	47-49	50-52	53-55	56-58	60-63
Waist	30-32	34-36	38-40	42-44	46-48	50-52	54-56	58-61
Inseam	29½	30	30½	31	31½	32½	32¾	33¾

Products described in this catalog are made of imported and domestic materials.



## Lab Apparel

Encompass delivers protection, performance and comfort in our lab apparel line. Our reusable labcoats are the perfect blend of style and function, while performance fabrics enhance the multiple product features and user benefits of our line.

Along with the quality products from Encompass, this line features lab apparel from one of the most recognized names in healthcare apparel, Meta™ Labwear.

The PerformanceRX line from Meta includes several styles with performance properties Powered by X-Static® fabric technology. X-Static permanently bonds textile fibers with a layer of 99.9 percent pure metallic silver. The silver layer creates an ionic shield that inhibits the growth of bacteria and fungi directly on the surface of the fabric. PerformanceRX Labcoats by Meta also deliver superior comfort by regulating temperature, eliminating odors and reducing static build-up.





Essentials Men's All-Purpose Labcoat  
(47405 – White)

## Essentials™ Men's All-Purpose Labcoat

- Classically styled four-button coat available in three lengths
- Features three outside patch pockets, a pager pocket and side access slits for pants/skirt pockets
- 80/20 polyester/cotton poplin treated with a stain release finish
- Available individually



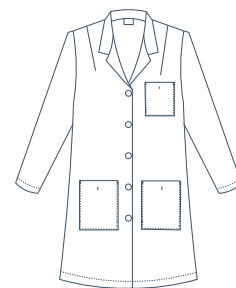
CAT NO.	DESCRIPTION	COLOR	SIZES
47405-W	Coat, Full-Length, 43"	White	Men's 32-56
47406-W	Coat, Knee-Length, 39"	White	Men's 32-56
47407-W	Coat, Staff-Length, 35"	White	Men's 32-56



Essentials Women's Princess-Style Labcoat  
(47401 – White)

## Essentials Women's Princess-Style Labcoat

- Tailored, single breasted style with five-button front
- Features a mock belt, three pockets and set-in sleeves
- 80/20 polyester/cotton poplin treated with a stain release finish
- Available individually



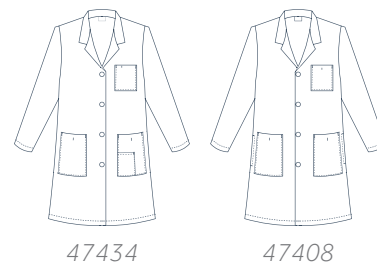
CAT NO.	DESCRIPTION	COLOR	SIZES
47401-W	Coat, Princess-Style, 39½" Length	White	Women's 02-18, 40-52



Merit Labcoat (47434 – White)

## Merit™ Labcoats

- Simple styling and features are ideal for cost conscious customers
- Available individually or in cases of 12 coats



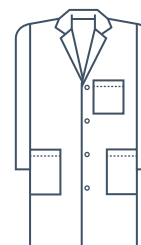
CAT NO.	DESCRIPTION	FEATURES	COLOR	SIZES
47434-W	Unisex Coat, 39" Length 65/35 polyester/cotton poplin with stain release finish	Three Pockets/ Side Access Slits	White	XS-3XL
47408-W	Women's Coat, 39½" Length 80/20 polyester/cotton poplin blend	Three Pockets/ Stitched Down Back Belt	White	Women's 04-18, 40-52



Meta Labwear 40" Unisex Labcoat (6116 – White)

## Meta™ Labwear 40" Unisex Labcoat

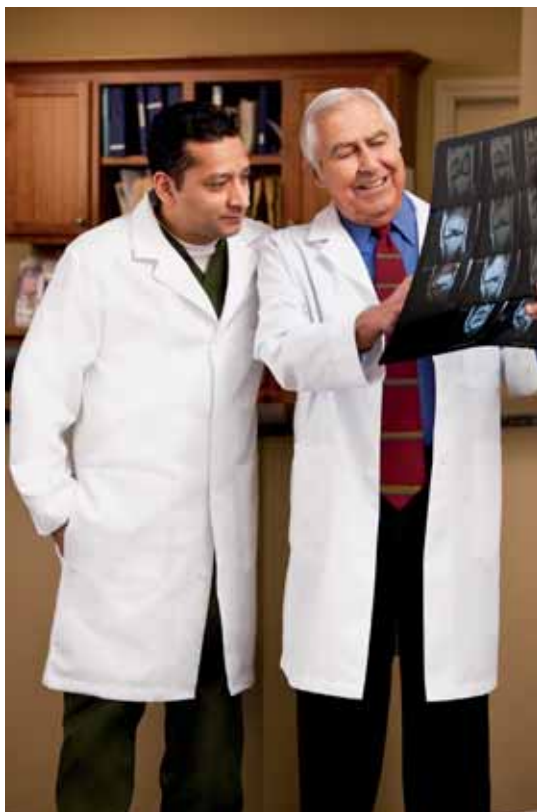
- 4 pockets, 1 inside pocket
- Hand access slits
- 2-piece back swing belt
- White: 65/35 performance poplin with soil release
- Colors: 65/35 poplin with soil release



6116

CAT NO.	DESCRIPTION	COLOR	SIZES
6116	Coat, 40" Length	<b>11</b> White	XXS-5X, ST-3XT
6116	Coat, 40" Length	<b>014</b> Navy	XS-5X
		<b>015</b> Black	
		<b>019</b> Blue	
6116	Coat, 40" Length	<b>036</b> Silver	XS-5X, ST-3XT

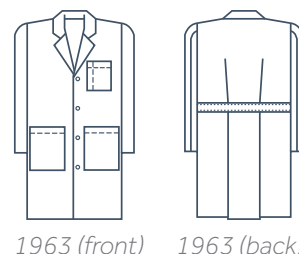
For size codes, please reference the Meta and Encompass sizing charts on page 42.



Meta Labwear 38" Twill Labcoat  
(1963 – White)

## Meta™ Labwear 38" Twill Labcoat

- Hand access slits
- 5 pockets – 2 lower patch pockets, 1 breast, 2 inside – 1 oversized to hold iPad®
- Pen divider on chest pocket
- Pleated back with sewn-down belt
- Matches women's style 1964
- 65/35 fine line twill with soil release



1963 (front)

1963 (back)

CAT NO.	DESCRIPTION	COLOR	SIZES
1963	Coat, 38" Length	White	Men's 32-60, 38L-56L

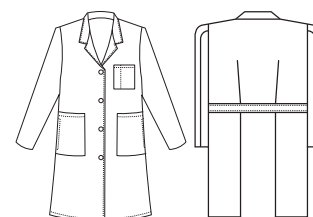
For size codes, please reference the Meta and Encompass sizing charts on page 42.



Meta Labwear 37" Twill Labcoat  
(1964 – White)

## Meta Labwear 37" Ladies Twill Labcoat

- 5 pockets – 2 lower patch pockets, 1 breast, 2 inside – 1 oversized to hold iPad®
- Pen holder in breast pocket
- Scissors holder
- Hand access slits
- Edge stitched front
- Matches men's style 1963
- Back has sewn-down belt with accenting darts above and pleats below
- 80/20 super blend twill with soil release



1964 (front)

1964 (back)

CAT NO.	DESCRIPTION	COLOR	SIZES
1964	Coat, 37" Length	White	Women's 0-20, 40-48 (20W-28W), 8T-20T

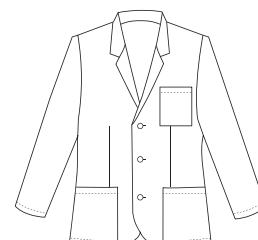
For size codes, please reference the Meta and Encompass sizing charts on page 42.



738

## Meta Labwear 28" Ladies iPad® Consultation Coat

- 7 Pockets – 2 lower outside iPad® pockets, 1 hidden cell pocket, 1 breast pocket and 3 inside pockets
- Front darts
- 3 Button closure
- 65/35 Fine line twill with soil release



739

## Meta Labwear 30" Mens iPad® Consultation Coat

- 7 Pockets – 2 lower outside iPad® pockets, 1 hidden cell pocket, 1 breast pocket and 3 inside pockets
- Front darts
- 3 Button closure
- 65/35 Fine line twill with soil release

CAT NO.	DESCRIPTION	COLOR	SIZES
738	Consultation Coat, 28"	White	Womens 0-20, 40-48, 8T-20T

CAT NO.	DESCRIPTION	COLOR	SIZES
739	Consultation Coat, 30"	White	Mens 32-56, 38L-56L

## Meta® Labcoat Sizing

### Women's Labcoats – Misses Sizes: 5'4½" To 5'7" And Tall Sizes (T): 5'7½" To 5'11"

SIZE CODE	04	06	08	10	12	14	16	18	20
Bust	33	34	35	36	37½	39	40½	42½	44½
Waist	24	25	26	27	28½	30	31½	33½	35½
Hips	34	35	36	37	38½	40	41½	43½	45½

### Women's Labcoats – Women's Sizes

SIZE CODE	40	42	44	46	48	50	52
Bust	46½	48½	50½	52½	54½	56½	58½
Waist	37½	39½	41½	43½	45½	47½	49½
Hips	47½	49½	51½	53½	55½	57½	59½

### Men's Labcoats – Regular Sizes: 5' 8" To 5' 11" And Long Sizes (L): 6' To 6' 3"

SIZE CODE	32	34	36	38	40	42	44	46	48	50	52	54	56
Chest	32	34	36	38	40	42	44	46	48	50	52	54	56
Waist	26	28	30	32	34	36	38	40	42	44	46	48	50

### Unisex Labcoats

SIZE CODE	XS	S	M	L	XL	2X	3X
Men's Size	30-32	34-36	38-40	42-44	46-48	50-52	54-56
Women's Size	04-06	08-10	12-14	16-18	40-42	44-46	48-50

Some sizes available in this book are not listed on these charts.

Please contact your Encompass Group Sales Representative for information about these additional sizes.

Products described in this catalog are made of imported and domestic materials.

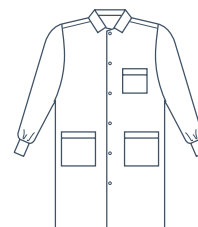




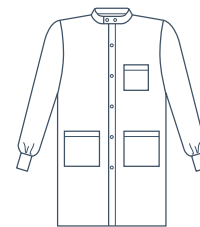
SafeGuard and SafeGuard Plus  
Snap Front Labcoats

## SafeGuard™ Fluid Resistant Fabric Labcoats

- Snap front
- Stain release finish
- Chest pocket
- Two lower patch pockets
- Knit cuffs
- Side access vents
- Available individually
- 99% polyester/1% carbon



46942,  
Lapel Collar



46943,  
Standup Collar

CAT NO.	DESCRIPTION	SIZE	COLOR	QTY/CASE
46942-103	Coat, Lapel Collar	Small	White	12 EA
46942-105	Coat, Lapel Collar	Medium	White	12 EA
46942-107	Coat, Lapel Collar	Large	White	12 EA
46942-109	Coat, Lapel Collar	X-Large	White	12 EA
46942-102X	Coat, Lapel Collar	2X-Large	White	12 EA
46942-113	Coat, Lapel Collar	Small	Blue	12 EA
46942-115	Coat, Lapel Collar	Medium	Blue	12 EA
46942-117	Coat, Lapel Collar	Large	Blue	12 EA
46942-119	Coat, Lapel Collar	X-Large	Blue	12 EA
46942-112X	Coat, Lapel Collar	2X-Large	Blue	12 EA
46943-103	Coat, Standup Collar	Small	White	12 EA
46943-105	Coat, Standup Collar	Medium	White	12 EA
46943-107	Coat, Standup Collar	Large	White	12 EA
46943-109	Coat, Standup Collar	X-Large	White	12 EA
46943-102X	Coat, Standup Collar	2X-Large	White	12 EA
46943-113	Coat, Standup Collar	Small	Blue	12 EA
46943-115	Coat, Standup Collar	Medium	Blue	12 EA
46943-117	Coat, Standup Collar	Large	Blue	12 EA
46943-119	Coat, Standup Collar	X-Large	Blue	12 EA
46943-112X	Coat, Standup Collar	2X-Large	Blue	12 EA



## PerformanceRX™ Powered by X-Static® Antimicrobial Technology

Meta Labwear delivers world class protection, performance and comfort in a new labcoat featuring Performance RX fabric powered by X-Static technology. X-Static permanently bonds textile fibers with a layer of 99.9 percent pure metallic silver. The silver layer creates an ionic shield that inhibits the growth of bacteria and fungi directly on the surface of the fabric. The result is comprehensive, permanent protection, lasting the life of the garment. Meta labcoats also deliver superior comfort by regulating temperature, eliminating odors and reducing static build-up. X-Static protection you can see and feel – look for the silver stripes – and be confident you are protecting yourself and your patients!



2% X-Static® Silver Twill

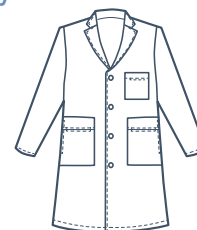


38" Men's X-Static Labcoat (Style 862)

### Meta Labwear 38" Men's Labcoat

Powered by X-Static® Antimicrobial Technology

- Antimicrobial fabric protection
- Odor elimination
- Thermal comfort management
- Antistatic performance
- 6 pockets
- Top stitched collar, lapel and front
- Hand access slits
- 78% polyester/20% cotton, 2% X-Static silver twill



862

CAT NO.	DESCRIPTION	COLOR	SIZES
862	Coat, 38" Length	White	Mens 32-52, 40L-48L



37" Ladies X-Static Labcoat (Style 863)

### Meta Labwear 37" Ladies Labcoat

Powered by X-Static® Antimicrobial Technology

- Antimicrobial fabric protection
- Odor elimination
- Thermal comfort management
- Antistatic performance
- 6 pockets – 3 are welt pockets
- Back Belt
- 78% polyester/20% cotton, 2% X-Static silver twill



863

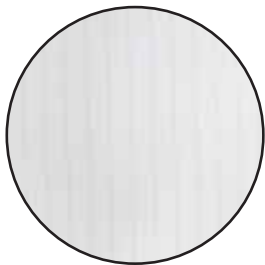
CAT NO.	DESCRIPTION	COLOR	SIZES
739	Ladies Coat, 37" Length	White	Womens 0-20

X-Static® is a registered trademark of Noble Fiber Technologies, LLC. Noble Biomaterials, Inc. is a global leader in bacterial management solutions.



# Antistatic Technology

META utilizes cutting-edge technology in our fluid resistant Labcoat. Performance and comfort! This Labcoat fabric is high filament 99% polyester with 1% carbon for static dissipation. The polyester makes for increased fluid resistance while air-texturing makes the coat soft and comfortable to wear.

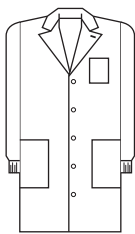


1% Carbon Fiber

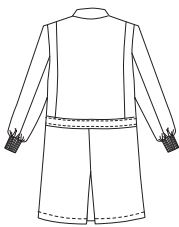


## 40" Unisex Fluid Resistant Labcoat

- 3 Pockets
- Fluid Resistant
- Button Closure at neck for full coverage
- Deep Back Vent for lap coverage when seated
- Back Pleat for extra movement
- Knit Cuffs99% Air Textured Polyester, 1% Carbon Fiber (carbon fiber shows as pin striping)
- Sizes: XS–3X



11653



Back Vent for full coverage when seated

CAT NO.	DESCRIPTION	COLOR	SIZES
11653	40" Fluid Resistant Coat	White	XS-3X

## We do custom embroidery...

### Create a Unique Identity

We offer the latest technology in embroidery design and application. Create a unique identity by adding name or job title to your customer's new uniform. Orders must be in writing and color of embroidery specified. Embroidery can be up to 4 lines.

Custom logos can be embroidered – please ask your customer service representative for a special price quote. Artwork submitted with color requirements takes two days for a price quote plus 2-3 weeks for a sample for your approval. Please allow an additional two weeks for delivery of finished garments.

### Text Style



Block



Script



Brush Script

### Standard Embroidery Chart

PRINT STYLE	SIZES
Block	3/8" / 1/2" / 3/4"
Script	3/8" / 1/2" / 3/4"
Brush Script	3/8" / 1/2" / 3/4"

### Thread Colors



More thread options available upon request

### Embroidery

#### HEART STETHOSCOPE



EMB-1450

#### CADUCEUS



EMB-1448

#### HOPE RIBBON



Begonia – EMB-1446\*  
Ruby Glint – EMB-1447

#### DOG & CAT



Black – EMB-1438\*  
Royal – EMB-1439  
White – EMB-1440  
Aquamarine – EMB-1441

#### HEART PAW



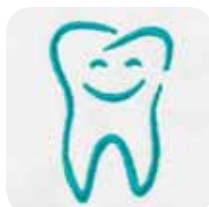
Black – EMB-1434  
Red – EMB-1435\*  
White – EMB-1436  
Pro-Purple – EMB-1437

#### AUTISM



EMB-1451

#### HAPPY TOOTH



Black – EMB-1442  
Royal – EMB-1443  
White – EMB-1444  
Aquamarine – EMB-1445\*

#### SMILE TOOTHPASTE



EMB-1449

\* Represents color shown



## Essentials™ and Merit™ Professional Labcoat Sizing

### Women's Labcoats – Misses Sizes

SIZE CODE	02	04	06	08	10	12	14	16	18	20
Bust	32	33	34	35	36	37½	39	40½	42½	44½
Waist	24	25	26	27	28	29½	31	32½	34½	36½
Hips	34½	35½	36½	37½	38½	40	41½	43	45	47

### Women's Labcoats – Women's Sizes

SIZE CODE	40	42	44	46	48	50	52
Bust	46½	48	50	52	54	56	58
Waist	38½	40½	42½	44½	46½	48½	50½
Hips	49	51	53	55	57	59	61

### Men's Labcoats

SIZE CODE	32	34	36	38	40	42	44	46	48	50	52	54	56
Chest	32	34	36	38	40	42	44	46	48	50	52	54	56
Waist	26	28	30	32	34	36	38	40	42	44	46	48	50

### Unisex Labcoats

SIZE CODE	XS	S	M	L	XL	2X	3X
Men's Size	30-32	34-36	38-40	42-44	46-48	50-52	54-56
Women's Size	04-06	08-10	12-14	16-18	40-42	44-46	48-50

Some sizes available in this book are not listed on these charts.

Please contact your Encompass Group Sales Representative for information about these additional sizes.

*Products described in this catalog are made of imported and domestic materials.*



Reusable Isolation Gown (46961-100)

## SafeCare® Reusable Isolation Gowns

- Gown design allows for comfortable arm movement and generous fit
- Full back with tie closure and white stockinette cuffs
- Non-linting and stain resistant
- Yellow, fluid resistant front, arms and back fabric.

CAT NO.	FIBER	DESCRIPTION	SIZE	COLOR	QTY/CASE
46961-100	100% Polyester	Standard Gown	Large	Yellow	60 EA
46961-1XL	100% Polyester	Standard Gown	X-Large	Yellow	60 EA
46961	100% Polyester	Reversible Gown	Large	Yellow	60 EA
46961-XL	100% Polyester	Reversible Gown	X-Large	Yellow	60 EA
39600-L*	99% Polyester/ 1% Carbon*	Raglan Sleeve Static Dissipative Gown	Large	Yellow	60 EA
39600-2X*	99% Polyester/ 1% Carbon*	Raglan Sleeve Static Dissipative Gown	2X-Large	Yellow	60 EA
39800-L	99% Polyester/ 1% Carbon*	Set in Sleeve Static Dissipative Gown	Large	Yellow	60/EA
39800-2X	99% Polyester/ 1% Carbon*	Set in Sleeve Static Dissipative Gown	2X-Large	Yellow	60/EA

\*Carbon yarns provide static dissipative characteristics.

## SafeCare® Breathable-Back Reusable Isolation Gowns

- Gown design allows for comfortable arm movement and generous fit
- Full back with tie closure and white stockinette cuffs
- Breathable back for coolness and comfort
- Yellow, fluid resistant front, arms and back (46964) fabric.

CAT NO.	FRONT FIBER	BACK FIBER	DESCRIPTION	SIZE	COLOR	QTY/CASE
46963-100	100% Polyester	55/45 Cotton/ Polyester	Standard Gown	Large	Yellow/ White	60 EA
46963-1XL	100% Polyester	55/45 Cotton/ Polyester	Standard Gown	X-Large	Yellow/ White	60 EA
46964-2X*	99% Polyester/ 1% Carbon*	55/45 Cotton/ Polyester	Reversible Static Dissipative Gown	2X-Large	Yellow	60 EA

\*Carbon yarns provide static dissipative characteristics.



Reusable Isolation Gown (46964-XL)



Reusable Isolation/Cover Gown (46960-117)

## Broadcloth Reusable Isolation/Cover Gowns

- Design allows for comfortable arm movement and generous fit
- Full back with tie closure and white stockinette cuffs, standard material bound neckline
- Lightweight broadcloth for coolness and comfort
- 50/50 cotton polyester blend
- Available in 2 different weights of broadcloth

CAT NO.	DESCRIPTION	SIZE	COLOR	QTY/CASE
46960-117	Heavy Weight Gown	Large	Yellow	72 EA
46960-119	Heavy Weight Gown	X-Large	Yellow	72 EA
46960-112X	Heavy Weight Gown	2X-Large	Yellow	72 EA
46960-113X	Heavy Weight Gown	3X-Large	Yellow	72 EA
46957-117	Light Weight	Large	Yellow	60 EA
46957-119	Light Weight	Large	Yellow	60 EA
46957-112X	Light Weight	Large	Yellow	60 EA



SafeCare® Three-Arm-Hole Isolation Gowns (HT0093-XL)

## SafeCare® Three-Arm-Hole Isolation Gowns

- Wrap-around design allows for no ties and generous fit
- White stockinette cuffs
- Non-linting and stain resistant
- Yellow, fluid resistant front, arms and back fabric.

CAT NO.	DESCRIPTION	FABRIC	SIZE	SWEEP	LENGTH	COLOR
HT0093-XL	3 Armhole Gown with Piping in Armhole, Long Sleeve with Cuff	99% Polyester/ 1% Carbon	One Size	80"	43 ½"	Yellow

# OR apparel & bedding

Providing excellent protection, comfort, efficient use and durable cost effective performance makes choosing Encompass reusable surgical apparel and textiles the best cost-per-use decision.

From basic coverage gowns to liquid-proof protective gowns, our surgical apparel and linens are designed to provide the best possible performance for their given application.

In addition to superior product selections, hospitals and surgery centers trust us to help them reduce costs and maximize efficiencies through our Clinical Resource Team and the following value-added benefits:

- Comprehensive Linen Management Support
- ExecutorNet Linen Management Software
- Cost Management Seminars
- Educational Materials





Lao-Mac  
LEVEL 4



In selecting Lac-Mac reusable surgical gowns, physicians and staff within your OR benefit from ultimate comfort and safety, as well as the use of an environmentally preferable product. Paragon gowns are gentle on the environment, allowing protection with reprocessing and reuse from 75-125 WDA cycles.



Paragon Level 3 Gown (Left)  
Paragon Level 4 Gown (Right)

## Paragon® Reusable Surgical Gowns

- R.MOR.Tex® liquid-proof, AAMI Level 4, and liquid-resistant, AAMI Level 3, barrier fabrics in critical zones on the gown front and on sleeves, from the elbow to knitted cuff
- Liquid-resistant fabric in noncritical zones
- The carrier fabric is comprised of 99% polyester/1% carbon. The barrier laminate consists of a 100% polyester knit top and bottom layer with a membrane center
- Uniquely designed neckline made from moisture-wicking knit fabric, color coded to identify size
- Improved sleeve designed to eliminate bulk along with softer tubular style cuff improves glove interface
- PB70 construction seam sealed set-in sleeves
- Bar code label



### CRITICAL ZONES FOR REUSABLE SURGICAL GOWNS

#### Front & Sleeves

*The highlighted areas shown are those areas considered the critical zones for a reusable surgical gown.*

*Paragon gown designs are a registered industrial design patent of Lac-Mac Limited.*



Our unique neckband wicks away moisture and eliminates chafing.



Less pleating and valleys reduces the risk for fluid seepage.

CAT NO.	DESCRIPTION	AAMI LEVEL	SIZE	COLOR	QTY/CASE
5XEAA381-305-S	Gown, Ties at Neck & Waist	3	Small	Green	12/EA
5XEAA381-305-M	Gown, Ties at Neck & Waist	3	Medium	Green	12/EA
5XEAA381-305-L	Gown, Ties at Neck & Waist	3	Large	Green	12/EA
5XEAA381-305-XL	Gown, Ties at Neck & Waist	3	X-Large	Green	12/EA
5XEAA381-305-2X	Gown, Ties at Neck & Waist	3	2X-Large	Green	12/EA
5XEAA381-305-3X	Gown, Ties at Neck & Waist	3	3X-Large	Green	12/EA
5XEAA381-305-4X	Gown, Ties at Neck & Waist	3	4X-Large	Green	12/EA
5XEAE381-305-S	Gown, Snaps at Neck, Ties at Waist	3	Small	Green	12/EA
5XEAE381-305-M	Gown, Snaps at Neck, Ties at Waist	3	Medium	Green	12/EA
5XEAE381-305-L	Gown, Snaps at Neck, Ties at Waist	3	Large	Green	12/EA
5XEAE381-305-XL	Gown, Snaps at Neck, Ties at Waist	3	X-Large	Green	12/EA
5XEAE381-305-2X	Gown, Snaps at Neck, Ties at Waist	3	2X-Large	Green	12/EA

\*Level 3 surgical gowns can be reprocessed and reused for 125 WDA cycles.

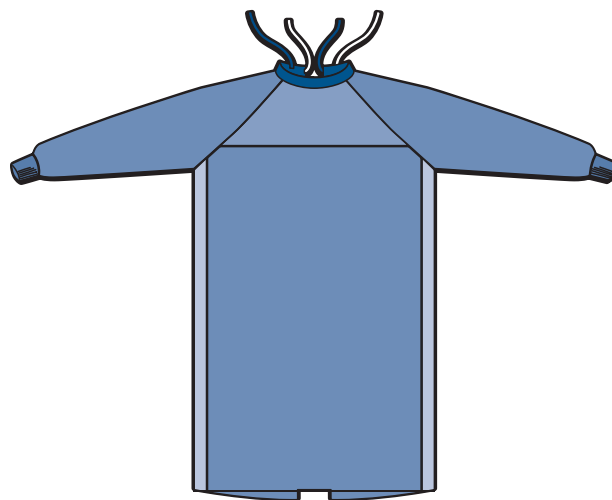
CAT NO.	DESCRIPTION	AAMI LEVEL	SIZE	COLOR	QTY/CASE
5XE381-201-S	Gown, Ties at Neck & Waist	4	Small	Blue	12/EA
5XE381-201-M	Gown, Ties at Neck & Waist	4	Medium	Blue	12/EA
5XE381-201-L	Gown, Ties at Neck & Waist	4	Large	Blue	12/EA
5XE381-201-XL	Gown, Ties at Neck & Waist	4	X-Large	Blue	12/EA
5XE381-201-2X	Gown, Ties at Neck & Waist	4	2X-Large	Blue	12/EA
5XE381-201-3X	Gown, Ties at Neck & Waist	4	3X-Large	Blue	12/EA
5XE381-305-S	Gown, Ties at Neck & Waist	4	Small	Green	12/EA
5XE381-305-M	Gown, Ties at Neck & Waist	4	Medium	Green	12/EA
5XE381-305-L	Gown, Ties at Neck & Waist	4	Large	Green	12/EA
5XE381-305-XL	Gown, Ties at Neck & Waist	4	X-Large	Green	12/EA
5XE381-305-2X	Gown, Ties at Neck & Waist	4	2X-Large	Green	12/EA
5XE381-305-3X	Gown, Ties at Neck & Waist	4	23X-Large	Green	12/EA
5XEAB381-201-S	Gown, Snaps at Neck, Ties at Waist	4	Small	Blue	12/EA
5XEAB381-201-M	Gown, Snaps at Neck, Ties at Waist	4	Medium	Blue	12/EA
5XEAB381-201-L	Gown, Snaps at Neck, Ties at Waist	4	Large	Blue	12/EA
5XEAB381-201-XL	Gown, Snaps at Neck, Ties at Waist	4	X-Large	Blue	12/EA
5XEAB381-201-2X	Gown, Snaps at Neck, Ties at Waist	4	2X-Large	Blue	12/EA
5XEAB381-305-S	Gown, Snaps at Neck, Ties at Waist	4	Small	Green	12/EA
5XEAB381-305-M	Gown, Snaps at Neck, Ties at Waist	4	Medium	Green	12/EA
5XEAB381-305-L	Gown, Snaps at Neck, Ties at Waist	4	Large	Green e	12/EA
5XEAB381-305-XL	Gown, Snaps at Neck, Ties at Waist	4	X-Large	Green	12/EA
5XEAB381-305-2X	Gown, Snaps at Neck, Ties at Waist	4	2X-Large	Green	12/EA

\*Level 4 surgical gowns can be reprocessed and reused for 75 WDA cycles.

For more information on our full line of Level 3 and Level 4 Surgical gowns, please contact your local Encompass representative or call us at 800-245-4636.

## SafeCare® Fabric Fluid-Resistant Gowns

- Dependable fluid resistant, reinforced 2 ply coverage in critical areas for additional coverage
  - From yoke to the bottom of gown
  - Shoulder to cuff on sleeves
- Fabric is 99% polyester and 1% carbon for durability and static dissipation
- Available with lightweight 100% polyester back panels or 60/40 cotton/polyester breathable back panels for additional comfort
- Double-needle seams on all critical areas to provide additional strength and durability
- Lint-free 100% polyester cuffs for ease of donning and quick drying
- Color-coded neck binding for easy size identification
- Available with tie or snap neck configurations



SafeCare® Fabric Fluid-Resistant Gown (46722-117)



60/40  
Cotton/Polyester  
or 100% Polyester  
Fabric



1 Ply  
Fabric



2 Ply  
Fabric

CAT NO.	DESCRIPTION	SIZE	NECK CLOSURE	NECK COLOR	BACK PANEL	QTY/CASE
46712-117	SafeCare Cover Gown	Large	Ties	Blue	60/40 Cotton/Polyester	12 EA
46712-119	SafeCare Cover Gown	X-Large	Ties	Yellow	60/40 Cotton/Polyester	12 EA
46712-217	SafeCare Cover Gown	Large	Snaps	Blue	60/40 Cotton/Polyester	12 EA
46712-219	SafeCare Cover Gown	X-Large	Snaps	Yellow	60/40 Cotton/Polyester	12 EA
46722-117	SafeCare Cover Gown	Large	Ties	Blue	100% Polyester	12 EA
46722-119	SafeCare Cover Gown	X-Large	Ties	Yellow	100% Polyester	12 EA
46722-217	SafeCare Cover Gown	Large	Snaps	Blue	100% Polyester	12 EA
46722-219	SafeCare Cover Gown	X-Large	Snaps	Yellow	100% Polyester	12 EA
46721-117	Safecare Standard Gown	Large	Ties	Blue	99/1 Poly/Carbon	12 EA
46721-119	Safecare Standard Gown	X-Large	Ties	Yellow	99/1 Poly/Carbon	12 EA
46721-217	Safecare Standard Gown	Large	Snaps	Blue	99/1 Poly/Carbon	12 EA
46721-219	Safecare Standard Gown	X-Large	Snaps	Yellow	99/1 Poly/Carbon	12 EA
46721-212X	Safecare Standard Gown	2X-Large	Snaps	Blue	99/1 Poly/Carbon	12 EA





## Level 4 Table Covers

- R-MOR-Tex™ Surgical Drape Barrier Fabric in Critical Zones
- Liquid-resistant fabric in non-critical zones
- ID label with QA grid
- Bar code label

### Level 4 Table Covers

CAT NO.	DESCRIPTION	COLOR	SIZE	WEIGHT (EA)
75XAAF 381	Mayo Stand, Level 4, rounded corners	Green or Blue	22x54	
25XK-N2665	Back Table Cover, Level 4	Green or Blue	60x90	
25XDAF 382	Large Back Table Cover, Level 4	Green or Blue	72x90	

## Standard and Customized Surgical Drapes

Encompass offers Level 4 Reusable Standard and Customized surgical drapes through its technology and product partner, Lac-Mac Limited.

The Lac-Mac Reusable Surgical Gown and Drape Program is acknowledged as one of the best in North America. Lac-Mac's breathable, high-performance Level 4 surgical products offer liquid-proof protection without compromising comfort.

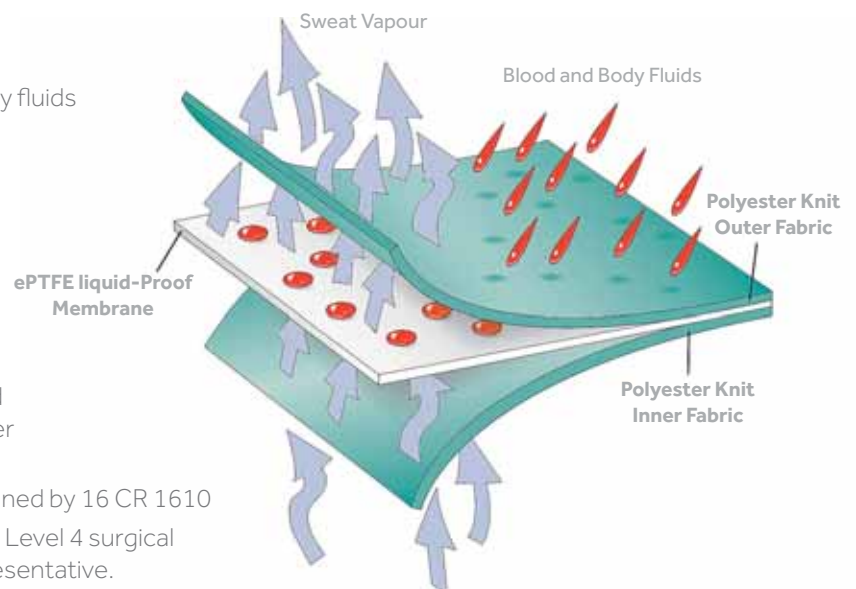
### Functionality of our R-MOR-Tex™ Surgical Drape Barrier Fabric

- Liquid-proof protection against blood and body fluids
- Highly breathable
- Low-linting
- Soft, memory-free with excellent drapability
- Extremely durable
- Offers exceptional fluid management

### Meeting the Standard

- Meets AAMI PB70 Standard and CSA Standard Z314.10.1-10 using ASTM F 1670 Liquid Barrier Test Method for Level 4 Standard
- Meets the requirement for flammability as defined by 16 CR 1610

For more information on standard and customized Level 4 surgical drapes, please contact your local Encompass representative.



## Level 2 Reusable Surgical Wrappers

- AAMI Level 2
- Single ply, liquid-resistant fabric
- Color-coded merrow edge
- Polyester fabric with carbon yarns for static dissipation
- Includes usage grid

CAT #	DESCRIPTION	COLOR	SIZE	EDGE COLOR
84E AF 381	Single Ply Wrapper, Level 2, Merrow Edge	Green or Blue	18" x 18"	White
84E AG 382	Single Ply Wrapper, Level 2, Merrow Edge	Green or Blue	23" x 23"	Grey
84E AK 381	Single Ply Wrapper, Level 2, Merrow Edge	Green or Blue	30" x 30"	Yellow
84E AN 381	Single Ply Wrapper, Level 2, Merrow Edge	Green or Blue	36" x 36"	Blue
84E AS 382	Single Ply Wrapper, Level 2, Merrow Edge	Green or Blue	45" x 45"	Mint
84E AX 382	Single Ply Wrapper, Level 2, Merrow Edge	Green or Blue	54" x 54"	Red

## Standard Single-Ply Wrappers

- Single ply, liquid-resistant fabric
- Color-coded merrow edge
- Polyester fabric with carbon yarns for static dissipation
- Includes usage grid

CAT #	DESCRIPTION	COLOR	SIZE	EDGE COLOR
26188-012	Merrow Serged Wrapper - Safecare	Ceil	12" x 12"	Black
26188-018	Merrow Serged Wrapper - Safecare	Ceil	18" x 18"	Red
26188-024	Merrow Serged Wrapper - Safecare	Ceil	24" x 24"	Green
26188-030	Merrow Serged Wrapper - Safecare	Ceil	30" x 30"	Navy
26188-036	Merrow Serged Wrapper - Safecare	Ceil	36" x 36"	Ceil
26188-045	Merrow Serged Wrapper - Safecare	Ceil	45" x 45"	White
26188-054	Merrow Serged Wrapper - Safecare	Ceil	54" x 54"	Gray
26188-572	Merrow Serged Wrapper - Safecare	Ceil	54" x 72"	Cinnamon

## T180 Two-Ply Wrappers

- Two ply, durable T180 55/45 cotton/poly percale
- Color-coded French hemmed edge
- Available in Ceil, Misty and Jade

CAT #	DESCRIPTION	COLOR	SIZE	EDGE COLOR
26182-012	French Hemmed Wrapper - T180	Misty	12" x 12"	Black
26182-018	French Hemmed Wrapper - T180	Misty	18" x 18"	Red
26182-024	French Hemmed Wrapper - T180	Misty	24" x 24"	Green
26182-036	French Hemmed Wrapper - T180	Misty	36" x 36"	Blue
26182-045	French Hemmed Wrapper - T180	Misty	45" x 45"	White
26182-054	French Hemmed Wrapper - T180	Misty	54" x 54"	Gray
26183-018	French Hemmed Wrapper - T180	Ceil	18" x 18"	Red
26183-024	French Hemmed Wrapper - T180	Ceil	24" x 24"	Green
26183-030	French Hemmed Wrapper - T180	Ceil	30" x 30"	Jade
26183-036	French Hemmed Wrapper - T180	Ceil	36" x 36"	Blue
26183-045	French Hemmed Wrapper - T180	Ceil	45" x 45"	White
26183-054	French Hemmed Wrapper - T180	Ceil	54" x 54"	Gray
26183-572	French Hemmed Wrapper - T180	Ceil	54" x 72"	Cinnamon
26184-018	French Hemmed Wrapper - T180	Jade	18" x 18"	Red
26184-024	French Hemmed Wrapper - T180	Jade	24" x 24"	Green
26184-036	French Hemmed Wrapper - T180	Jade	36" x 36"	Blue
26184-045	French Hemmed Wrapper - T180	Jade	45" x 45"	White
26184-054	French Hemmed Wrapper - T180	Jade	54" x 54"	Gray
26184-572	French Hemmed Wrapper - T180	Jade	54" x 72"	Cinnamon



## Absorbent Towels

- Designed for absorbency
- Tight weave
- 100% long staple cotton maximizes absorbency and durability
- Hemmed on all four sides

CAT NO.	DESCRIPTION	COLOR	SIZE	WEIGHT (EA)
47825-010R	Aero, Absorbent Weave - Domestic	White	18" x 32"	.21 LB
47825-025R	Aero, Absorbent Weave - Domestic	Jade Green	18" x 32"	.21 LB
47825-040R	Aero, Absorbent Weave - Domestic	Misty Green	18" x 32"	.21 LB
47825-070R	Aero, Absorbent Weave - Domestic	Ceil Blue	18" x 32"	.21 LB
47825-525	Essentials, Absorbent Weave - Import	Jade Green	18" x 31"	.21 LB
47825-540	Essentials, Absorbent Weave - Import	Misty Green	18" x 31"	.21 LB
47825-570	Essentials, Absorbent Weave - Import	Ceil Blue	18" x 30"	.17 LB

## Huck Weave Towels

- Tight huck weave for low-lint performance
- 100% long staple cotton maximizes absorbency and durability
- Hemmed on all four sides

CAT NO.	DESCRIPTION	COLOR	SIZE	WEIGHT (EA)
47960-JDE	Aero LF, Huck Weave - Domestic	Jade Green	17" x 32"	0.18 LB

## T140 Colored Sheeting

- Durable heavyweight weave
- 100% cotton is durable and absorbent
- Available by the dozen

CAT NO.	DESCRIPTION	COLOR	SIZE	WEIGHT (EA)
49410-355	Sheet, Flat T140 Muslin	Jade Green	72" x 108"	1.72 LB
49410-455	Sheet, Flat T140 Muslin	Misty Green	72" x 108"	1.72 LB
49412-310	Pillowcase, T140 Muslin	Jade Green	42" x 36"	.28 LB
49412-410	Pillowcase, T140 Muslin	Misty Green	42" x 36"	.28 LB

## T180 Colored Sheeting

- Durable 55/45 cotton/polyester percale
- Tight weave means minimal linting
- Poly blend is durable and allows faster dry time
- Available by the dozen

CAT NO.	DESCRIPTION	COLOR	SIZE	WEIGHT (EA)
49414-355	Sheet, Flat T180 Percale	Jade Green	70" x 108"	1.28 LB
49414-455	Sheet, Flat T180 Percale	Misty Green	70" x 108"	1.28 LB
49416-210	Pillowcase T180 Percale	Ceil Blue	42" x 36"	.25 LB
49416-310	Pillowcase T180 Percale	Jade Green	42" x 36"	.25 LB
49416-410	Pillowcase T180 Percale	Misty Green	42" x 36"	.25 LB
50035-272	Sheet, Draw T180 Percale	Ceil Blue	54" x 72"	.833 LB
50035-572	Sheet, Draw T180 Percale	Jade Green	54" x 72"	.833 LB
50035-072	Sheet, Draw T180 Percale	Misty Green	54" x 72"	.833 LB
50035-081	Sheet, Draw T180 Percale	Misty Green	54" x 81"	.88 LB
50035-290	Sheet, Draw T180 Percale	Ceil Blue	54" x 90"	.94 LB
50035-090	Sheet, Draw T180 Percale	Misty Green	54" x 90"	.94 LB
50035-390	Sheet, Draw T180 Percale	Jade Green	54" x 90"	.94 LB



# bed & bath

Encompass bed and bath products assist in creating a room environment appropriate for rest and respite. Patients should feel positively about their room so that they can concentrate on their medical circumstances. Bedding and bath products used to care for patients should be selected for their quality and the comfort they impart to the patient experience. A patient's sense of well-being comes in part from their perception of care and attention to detail.

Encompass offers high quality patient focused products that meet this need. A broad array of choices are available in blended and knit sheeting, bedspreads, spread blankets, thermal blankets, bath blankets, disposable and reusable pillows, and terry towels and washcloths. Whether you require the high aesthetic appeal of our Impressions line, the durability and longevity provided by our Synergy line, or the economical focus of our Essentials and Merit lines, we have a product to help create a pleasant patient experience.





PerformanceRX® Sheeting



Global Select™ Collection



Performance Muslin Collection



Sateen Draw Sheets

## PerformanceRX® Collection

- 55/45 Cotton/Poly blend for durability in processing
- Tight, plain weave
- Pure-finish, percale weave
- Efficient laundry processing

CAT NO.	DESCRIPTION	SIZE	WEIGHT	HEM	QTY/CS
53465-115	Sheet Flat	66" x 115"	1.17 LB	White	60
53465-108	Sheet Flat	66" x 108"	1.10 LB	White	60
53465-034	Pillowcase	42" x 34"	0.22 LB	White	300
53467-072	Sheet Draw	54" x 72"	0.60 LB	Blue	60

## Global Select™ Collection

- Pure-finish percale weave
- Ring-spun yarns provide smoothness and good hand
- Durable 55/45 cotton/poly blend for exceptional value

CAT NO.	DESCRIPTION	SIZE	WEIGHT	HEM	QTY/CS
53765-115	Sheet Flat Global Select	66" x 115"	1.17 LB	White	60 EA
53765-108	Sheet Flat Global Select	66" x 108"	1.10 LB	White	60 EA
53765-104	Sheet Flat Global Select	66" x 104"	1.06 LB	White	60 EA
53766-084	Sheet Fitted Global Select	36" x 84" x 9"	0.80 LB	Blue	60 EA
53766-080	Sheet Fitted Global Select	36" x 80" x 9"	0.76 LB	Red	60 EA
53766-480	Sheet Fitted Global Select	42" x 80" x 9"	0.86 LB	Lt Blue	60 EA
53767-081	Sheet Draw Global Select	54" x 81"	0.68 LB	Red	60 EA
53767-072	Sheet Draw Global Select	54" x 72"	0.60 LB	Blue	60 EA
53765-034	Pillowcase Global Select	42" x 34"	0.22 LB	White	300 EA

## Performance Muslin Collection

- Cost-effective muslin T-130, ring-spun yarns
- Durable 55/45 cotton/polyester blend

CAT NO.	DESCRIPTION	SIZE	WEIGHT	HEM	QTY/CS
49624-115	Sheet Flat Muslin	66" x 115"	1.17 LB	White	60 EA
49624-108	Sheet Flat Muslin	66" x 108"	1.11 LB	White	60 EA
49624-104	Sheet Flat Muslin	66" x 104"	1.06 LB	White	60 EA
49622-040	Sheet Fitted Muslin	36" x 84" x 8½"	0.78 LB	Blue	60 EA
49622-025	Sheet Fitted Muslin	36" x 80" x 8½"	0.75 LB	Red	60 EA
50626-581	Sheet Draw Muslin	54" x 81"	0.68 LB	Red	60 EA
50626-572	Sheet Draw Muslin	54" x 72"	0.60 LB	Blue	60 EA
49623-034	Pillowcase Muslin	42" x 34"	0.22 LB	White	300 EA

## Sateen Draw Sheets

Versatile and durable, our heavy sateen draw sheets will withstand the rigors of institutional use.

- Strong, durable, 100% cotton twill
- Extra heavyweight fabric

CAT NO.	DESCRIPTION	FABRIC	SIZE	WEIGHT	HEM THREAD
50000-072	Heavy-Duty Sateen Draw Sheet	100% Cotton Twill	54" x 72"	1.45 LB	Natural
50000-081	Heavy-Duty Sateen Draw Sheet	100% Cotton Twill	54" x 81"	1.65 LB	Brown
50000-090	Heavy-Duty Sateen Draw Sheet	100% Cotton Twill	54" x 90"	1.80 LB	Green



Regal Touch Collection

## Regal Touch Collection

- Made of long-staple ring-spun Egyptian cotton for a smooth yet crisp hand
- Cotton rich twill ensures superior drapability and durability
- Enhanced tear strength and pilling resistance
- 55/45 cotton/poly blend

CAT NO.	DESCRIPTION	SIZE	HEM COLOR	WEIGHT	QTY/CS
53965-115	Sheet Flat Regal Touch	66" x 115"	White	1.21 LB	60 EA
53965-108	Sheet Flat Regal Touch	66" x 108"	White	1.13 LB	60 EA
53965-104	Sheet Flat Regal Touch	66" x 104"	White	1.09 LB	60 EA
53966-088	Sheet Fitted Regal Touch	36" x 88" x 9"	Green	0.86 LB	60 EA
53966-084	Sheet Fitted Regal Touch	36" x 84" x 9"	Blue	0.82 LB	60 EA
53966-080	Sheet Fitted Regal Touch	36" x 80" x 9"	Red	0.79 LB	60 EA
53967-081	Sheet Draw Regal Touch	54" x 81"	Red	0.70 LB	60 EA
53967-072	Sheet Draw Regal Touch	54" x 72"	Blue	0.62 LB	60 EA
53965-034	Pillowcase Regal Touch	42" x 34"	White	0.23 LB	300 EA



Colored Sheeting Collection

## Colored Sheeting Collection

- Use colored and patterned sheets to enhance the appearance of your patient rooms
- Create a home-like environment in any area of your facility
- Constructed of highest quality T180 percale
- Cotton/poly construction provides for even processing

CAT NO.	DESCRIPTION	COLOR	SIZE
49434-BLU	Sheet Flat	Porcelain Blue	66" x 115"
49434-ROS	Sheet Flat	English Rose	66" x 115"
49434-JAD	Sheet Flat	Soft Jade Green	66" x 115"
49444-BON	Sheet Flat	Bone	66" x 115"
49435-BLU	Sheet Flat	Porcelain Blue	66" x 108"
49435-ROS	Sheet Flat	English Rose	66" x 108"
49435-JAD	Sheet Flat	Soft Jade Green	66" x 108"
49445-BON	Sheet Flat	Bone	66" x 108"
49432-BLU	Sheet Fitted	Porcelain Blue	36" x 84" x 9"
49432-ROS	Sheet Fitted	English Rose	36" x 84" x 9"
49432-JAD	Sheet Fitted	Soft Jade Green	36" x 84" x 9"
49442-BON	Sheet Fitted	Bone	36" x 84" x 9"
49431-BLU	Sheet Fitted	Porcelain Blue	36" x 80" x 9"
49431-ROS	Sheet Fitted	English Rose	36" x 80" x 9"
49431-JAD	Sheet Fitted	Soft Jade Green	36" x 80" x 9"
49441-BON	Sheet Fitted	Bone	36" x 80" x 9"
49433-BLU	Pillow Case	Porcelain Blue	42" x 36"
49433-ROS	Pillow Case	English Rose	42" x 36"
49433-JAD	Pillow Case	Soft Jade Green	42" x 36"
49443-BON	Pillow Case	Bone	42" x 34"

## Knitted Bed Linens

Knitted bed linens are often preferred to woven by patients, staff and laundry managers in the healthcare industry. The natural stretch and construction of these products make them easy to place on beds. They are easy to process because there is no need to iron and usually no folding. Finally, their softness and stretch are ideal for comfort and skin care.

Encompass offers a broad line of knit products to meet every functional, price and comfort need. In order to make the right choice for your needs it is important to understand the types of knits available and the innovations that differentiate our sheets.

### KNIT TYPE

**PIQUE** is a softly textured knit which provides the maximum protection from snags and runs and is soft on the skin.

**INTERLOCK** is a soft, breathable knit that forms a knot at the juncture of the threads to prevent runs and resist pinholes.

**JERSEY** is the same knit you see in retail t-shirts and is a soft, breathable knit.



Envelope Design

## Knit Fitted Envelope Design Bottom Sheets

Encompass' Envelope Design knit sheets improve patient comfort with added convenience for staff. The patented envelope design construction allows for easier bed-making and ensures that sheets stay in place when the bed is raised or lowered. The unique no-elastic construction makes for exceptional durability and stands up to the rigors of institutional laundering.

## UltraKnit™, UltraKnit™ Optimum and SleepKnit™ Fabric Collections

- Breathable, extra-thick UltraKnit™ texture is more resistant to abrasion and mechanical damage than similar cotton/polyester knitted sheets
- Dries more rapidly than cotton/polyester blends
- Special stretch construction ensures a wrinkle-free surface and accommodates a wide range of healthcare mattress sizes
- SleepKnit™ Fabric is a smooth, special plated cotton/polyester construction that combines the durability of textured polyester while always keeping 100% cotton on the surface for patient softness and comfort
- Four-way stretch construction offers a wrinkle-free surface and reduces shearing and friction, minimizing the risk of bedsores
- Stain-release fabric withstands frequent use and laundering

CAT NO.	DESCRIPTION	SIZE	KNIT TYPE	WEIGHT	HEM COLOR
49452-27B	Sheet Knit Fitted UltraKnit™ with Envelope Design	36" x 84" x 8"	100% Poly Jersey	27 OZ	Green
49452-25B	Sheet Knit Fitted UltraKnit™ with Envelope Design	36" x 84" x 8"	100% Poly Jersey	24 OZ	Green
49452-45B	Sheet Knit Fitted UltraKnit™ Optimum with Envelope Design	36" x 84" x 8"	100% Poly Jersey	24 OZ	Green
SK2000B/P/SP	Sheet Knit Fitted UltraKnit™ with Envelope Design	36" x 84" x 8"	100% Poly Jersey	20.5 OZ	Blue
49452-20B	Sheet Knit Fitted SleepKnit™ with Plated Construction & Envelope Design	36" x 84" x 8"	60/40 Ctn/Poly Jersey	16.6 OZ	Blue
53474-4029	Pillowcase Knit UltraKnit™ Optimum	17" x 33"	100% Poly Jersey	5.3 OZ	White

## Toe-Pleat Semi-Fitted Knit Top Sheet

- Revolutionary design for patient safety and comfort
- Patented Foot-Ease feature reduces pressure on patients' feet
- Design to be included in your skin integrity program
- Semi-fitted design fitted around foot end of mattress, but flat at head
- Luxurious UltraKnit fabric



*Toe-Pleat Semi-Fitted Knit Top Sheet*

CAT NO.	DESCRIPTION	SIZE	KNIT TYPE	WEIGHT	HEM COLOR
SK11T/P/SP2	Top Sheet Knit Semi-Fitted UltraKnit™ Toe Pleat	60"x 84" x 8"	100% Poly Jersey	22 OZ	Yellow



*Pique Knit Fitted Bottom Sheet*

## Pique Knit Fitted Bottom Sheet

- Pique knit designed to reduce snags and runs from pinholes
- Heavyweight textured feel creates a comfortable surface
- Bias binding adds durability

CAT NO.	DESCRIPTION	SIZE	KNIT TYPE	WEIGHT	HEM COLOR
49452-626	Pique Knit Fitted Sheet	36" x 84" x 12"	Pique 55/45 Cotton/Poly	24 OZ	Gold/Bias Bound



*Knit Fitted Sheets*

## Knit Fitted Bottom Sheets

CAT NO.	DESCRIPTION	SIZE	KNIT TYPE	WEIGHT	HEM COLOR
49452-650	Knit Fitted Sheet	36" x 86" x 12"	Interlock 55/45 Cotton/Poly	23 OZ	Green
49452-647	Knit Fitted Sheet	36" x 84" x 12"	Jersey 55/45 Cotton/Poly	19 OZ	Mint
49452-640	Knit Fitted Sheet	36" x 84" x 14"	Jersey 55/45 Cotton/Poly	16 OZ	Black



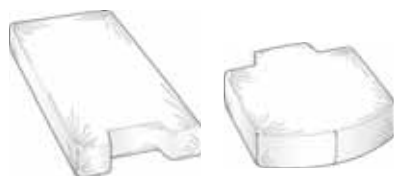


49452-621B Knit Stretcher Sheet

## Knit Fitted Stretcher Sheets

- Provide an easy fit on almost any stretcher
- Available in a selection of knit fabrics – 55/45 Cotton/Poly, UltraKnit™, and SleepKnit™. UltraKnit™ provides maximum durability.
- Available in White and Blue

CAT NO.	DESCRIPTION	SIZE	KNIT TYPE/BLEND	WEIGHT	HEM COLOR
49452-621	Stretcher Sheet, White	30" x 80" x 8"	Jersey 55/45 Cotton/Poly	11 OZ	White
49452-621B	Stretcher Sheet, Blue	30" x 80" x 8"	Jersey 55/45 Cotton/Poly	11 OZ	Blue
49452-3SW	Stretcher Sheet, SleepKnit™, White	28" x 77" x 4"	Jersey 60/40 Cotton/Poly	11.5 OZ	Orange
SK3003S/BL	Stretcher Sheet, UltraKnit™, Blue	28" x 81" x 5"	Jersey 100% Poly	16 OZ	White



Top and bottom sections for Hill-Rom Affinity birthing bed and similar beds



Top and bottom sections for Stryker Adel birthing bed and similar beds



Top and bottom sections for Hill-Rom Genesis birthing bed and similar beds

## Knit Fitted Birthing Sheets

- Sized to fit most standard birthing beds including Stryker Adel, Hill-Rom Affinity and Genesis
- Color coded bindings for easy laundering and sorting
- No iron construction saves time and effort
- Elastic-free construction

CAT NO.	DESCRIPTION	SIZE	KNIT TYPE	WEIGHT	BINDING COLOR
49452-394	Birthing Sheet, Upper, Stryker Adel, White	32" x 50" x 5"	UltraKnit™	18.3 OZ	Stone Blue
49452-395	Birthing Sheet, Lower, Stryker Adel, White	24" x 34" x 5"	UltraKnit™	9.8 OZ	White
49452-393	Birthing Sheet, Upper, H-R Affinity, White	34" x 51" x 5"	UltraKnit™	11.6 OZ	Orange
49452-392	Birthing Sheet, Lower, H-R Affinity, White	25" x 34" x 5"	UltraKnit™	8.3 OZ	Green
49452-390	Birthing Sheet, Upper, H-R Genesis, White	28" x 54" x 5"	UltraKnit™	12.7 OZ	White
49452-391	Birthing Sheet, Lower, H-R Genesis, White	28" x 22" x 5"	UltraKnit™	7.6 OZ	White
49458-FBON	Birthing Sheet, Foot, Bone	34" x 25" x 5"	UltraKnit™	7.8 OZ	Green
49458-HBON	Birthing Sheet, Head, Bone	34" x 51" x 5"	UltraKnit™	11.6 OZ	Orange

## Bariatric and Extra-Width Sheets

- Sized to fit a variety of extra-width mattresses
- Offered in Knit Fitted and Woven Fitted bottom sheets, as well as Flat Top Sheets
- Bone color helps to differentiate and keep separate from standard size sheets



*Bariatric Sheeting*

### Knit Bariatric Sheeting

CAT NO.	DESCRIPTION	SIZE	FABRIC	WEIGHT	HEM COLOR
49457-038	Sheet, Fitted, UltraKnit™, Bone	38" x 80" x 7"	100% Polyester Jersey Knit	19 OZ	Blue
SK415B/BE	Sheet, Fitted, UltraKnit™, Bone	42" x 80" x 7"	100% Polyester Jersey Knit	21 OZ	White
49457-048	Sheet, Fitted, UltraKnit™, Bone	48" x 80" x 7"	100% Polyester Jersey Knit	21.9 OZ	Orange
49457-056	Sheet, Fitted, UltraKnit™, Bone	54" x 80" x 8"	100% Polyester Jersey Knit	28.48 OZ	White
SK40T/BE-MIP	Sheet, Semi-Fitted, UltraKnit™, Bone	80" x 54"	100% Polyester Jersey Knit	30 OZ	White
SK1019P/BE	Pillowcase, UltraKnit™, Bone	19" x 32"	100% Polyester Jersey Knit	4.4 OZ	White
49452-449	Sheet, Fitted, Knit White	42" x 80" x 9"	55/45 Cotton/Poly Jersey Knit	24 OZ	Light Blue

### Woven Bariatric Sheeting

CAT NO.	DESCRIPTION	SIZE	FABRIC	WEIGHT	HEM COLOR
48032-B4BL	Sheet, Fitted, Woven T180, Blue	48" x 80" x 9"	T180 50/50 Cotton/Poly	1.10 LB	White
48034-B4BL	Sheet, Flat, Woven T180, Blue	70" x 104"	T180 50/50 Cotton/Poly	1.19 LB	White
48032-B42	Sheet, Fitted, Woven, T180, Bone	42" x 80" x 9"	T180 50/50 Cotton/Poly	1 LB	Red
48032-B4BO	Sheet, Fitted, Woven T180, Bone	48" x 80" x 9"	T180 50/50 Cotton/Poly	1.10 LB	White
48034-Q1B	Sheet, Flat, Woven T180, Bone	72" x 104"	T180 50/50 Cotton/Poly	1.10 LB	White
53766-480	Sheet, Fitted, Woven, White	42" x 80" x 9"	Percale 55/45 Cotton/Poly	0.86 LB	Light Blue

## Swift™ and UltraSlide™ Patient Positioning System

More than any other occupation or industry, nursing personnel file for the highest number of operational injuries related to back pain (National Institute for Occupational Safety and Health).

Implementing the standard use of the Swift™ positioner and UltraSlide™ system will create a safer healthcare environment for caregivers, ensure the comfort and safety of patients and residents and support the facility's no-lift policy.

*Swift*™

*UltraSlide*™



Swift™ and UltraSlide™ for standard size mattresses identified by blue color



Swift™ and UltraSlide™ for bariatric mattresses identified by yellow color



Swift™ and UltraSlide™ for stretcher mattresses identified by orange color



Swift™ Patient Positioner

## Swift™ Breathable Patient Positioner

Manual positioning exposes caregivers to increased risk of neck, shoulder and back injuries. Swift™ is a cost-effective, low-friction taffeta positioner that allows caregivers to safely and easily perform handling tasks with little physical strain.

- Quality 100% synthetic surface provides patient comfort and reduces the risk of shearing friction
- Low-friction backing allows staff to reposition patients safely and easily
- Breathable taffeta backing reduces the risk of heat and moisture build-up under patient, enhancing comfort
- Generous sizing provides maximum support
- Can be laundered with other bed linens

CAT NO.	DESCRIPTION	SIZE	FABRIC	WEIGHT	HEM COLOR
PTD-56	Swift™ Patient Positioner, Standard, Whootex	40" x 72"	Blue 100% Poly Taffeta	10.7 OZ	White
PTD-56/G	Swift™ Patient Positioner, Standard, Whootex	40" x 72"	Green 100% Poly Taffeta	10.7 OZ	White
PTD-56/BA/Y	Swift™ Patient Positioner, Bariatric, Whootex	50" x 72"	Yellow 100% Poly Taffeta	13.5 OZ	White
PTD-31	Swift™ Patient Positioner, Stretcher, Whootex	40" x 54"	Orange 100% Poly Taffeta	8.4 OZ	White



UltraSlide Bottom Sheet

## UltraSlide™ Bottom Sheets

The Swift™ UltraSlide™ System is a fitted bottom sheet modified with a low-friction panel down the center and is used together with a Swift™ Patient Positioner. UltraSlide™ should be used when patients/residents have little or no mobility and require extensive or total assistance for repositioning in bed.

Used individually or together, the two parts of the Swift™ UltraSlide™ System reduce the force required to turn or reposition bed-bound patients/residents.

- Special, stretch UltraKnit™ construction provides a smooth surface and accommodates a wide range of healthcare mattress sizes
- Central low-friction panel of blue taffeta significantly reduces resistance when used in conjunction with the Swift™ Positioner
- Blue taffeta panel includes carbon fibers to reduce static build-up
- Durable, 100% synthetic fabric ensures quick drying and longevity

CAT NO.	DESCRIPTION	SIZE	WEIGHT/EA	ID COLOR
PTD-LS/S	UltraSlide™ Bottom Sheet, Standard	32" x 84" x 8"	21.2 OZ	Blue Taffeta, White Thread
PTD-LS/S/BA/Y	UltraSlide™ Bottom Sheet, Bariatric	54" x 80" x 8"	24.2 OZ	Blue Taffeta, Green Binding, Yellow Thread
PTD-LS/S/BA1/Y	UltraSlide™ Bottom Sheet, Bariatric	48" x 80" x 7"	22 OZ	Blue Taffeta, White Binding, Yellow Thread
PTD-LS/S/31	UltraSlide™ Bottom Sheet, Stretcher	31" x 78" x 5"	13.9 OZ	Blue Taffeta, Orange Thread



*Bath Blanket, Khaki stripe*



*Bath Blanket, bleached*



*Bath Blanket, unbleached*

## Bath Blankets

- Available in cost-effective high cotton content or more durable high-blend construction
- Available in a variety of sizes and weights
- Bleached and unbleached options available
- Options with colored stripe adds a touch of style to any room

### Impressions Bath Blankets

CAT NO.	DESCRIPTION	SIZE	WEIGHT	BLEND	FINISH
49225-6BL	Bath Blanket	70" x 90"	2 LB	80/20 Cotton/Poly	Bleached w/ Blue Stripe
49225-6KH	Bath Blanket	70" x 90"	2 LB	80/20 Cotton/Poly	Bleached w/ Khaki Stripe
49225-620	Bath Blanket	72" x 90"	2 LB	55/45 Cotton/Poly	Bleached
49225-622	Bath Blanket	72" x 90"	2 LB	55/45 Cotton/Poly	Unbleached

### Synergy Bath Blankets

CAT NO.	DESCRIPTION	SIZE	WEIGHT	BLEND	FINISH
49277-617	Bath Blanket	70" x 90"	1.75 LB	55/45 Cotton/Poly	Unbleached

### Merit Bath Blankets

CAT NO.	DESCRIPTION	SIZE	WEIGHT	BLEND	FINISH
49247	Bath Blanket	70" x 90"	1.4 LB	80/20 Cotton/Poly	Unbleached
49240-670	Bath Blanket	66" x 90"	1.25 LB	84/16 Cotton/Poly	Unbleached
49257-617	Bath Blanket	70" x 90"	1.75 LB	88/12 Cotton/Poly	Unbleached





*UltraLinks Spread Blankets, assorted colors*



## UltraLinks Spread Blankets

- Soft, 100% synthetic fabric delivers lasting patient comfort and warmth
- Quick-drying material offers energy savings
- Durable, long-lasting construction reduces replacement costs
- Stain-resistant properties reduce costly re-laundering
- High color retention properties ensure long-lasting, vibrant colors, even after repeated washing
- Reversible construction allows reduced bed make up time and consistent color when folded or on the bed

CAT NO.	SIZE	BLEND	WEIGHT	COLOR
49415-66BL	66" x 96"	100% Polyester	3.5 LB	Blue
49415-66GR	66" x 96"	100% Polyester	3.5 LB	Green
49415-66MA	66" x 96"	100% Polyester	3.5 LB	Mauve
49415-66OA	66" x 96"	100% Polyester	3.5 LB	Oat
49415-66WH	66" x 96"	100% Polyester	3.5 LB	White
49415-74AG	74" x 102"	100% Polyester	4.17 LB	Aspen Green
49415-74TN	74" x 102"	100% Polyester	4.17 LB	Tan

## Links Spread Blankets

An exclusive Encompass product, the Links combines the warmth of a traditional thermal blanket with the designer look of a textured bedspread.

- Fine yarns and tighter twist weave reduce snagging and the bulk and size of the spread
- Quicker processing time and less storage space on shelves and carts
- Durable and cozy blend of 55/45 cotton/polyester also has superior color retention



*Links Spread Blankets*

### Links

CAT NO.	SIZE	BLEND	WEIGHT	COLOR
49142-WHI	74" x 96"	55/45 Cotton/Poly	3.5 LB	White
49142-CHA	74" x 96"	55/45 Cotton/Poly	3.5 LB	Champagne
49142-FED	74" x 96"	55/45 Cotton/Poly	3.5 LB	Federal Blue
49142-MAU	74" x 96"	55/45 Cotton/Poly	3.5 LB	Mauve
49142-MIN	74" x 96"	55/45 Cotton/Poly	3.5 LB	Mint Sprig
49142-SLA	74" x 96"	55/45 Cotton/Poly	3.5 LB	Slate
49142-TEA	74" x 96"	55/45 Cotton/Poly	3.5 LB	Teal

### Links Plus

CAT NO.	SIZE	BLEND	WEIGHT	COLOR
49143-WHI	74" x 108"	55/45 Cotton/Poly	4.0 LB	White
49143-CHA	74" x 108"	55/45 Cotton/Poly	4.0 LB	Champagne
49143-FED	74" x 108"	55/45 Cotton/Poly	4.0 LB	Federal Blue
49143-MAU	74" x 108"	55/45 Cotton/Poly	4.0 LB	Mauve
49143-TEA	74" x 108"	55/45 Cotton/Poly	4.0 LB	Teal
49143-MUL	74" x 108"	55/45 Cotton/Poly	4.0 LB	Multi-Color



*Thermal Blankets, white*

## Thermal Blankets

- 100% cotton for comfort and softness
- Available in a variety of weights to meet your needs
- Thermal cell construction provides warmth without extra weight
- Blended option available for added durability

CAT NO.	DESCRIPTION	SIZE	BLEND	WEIGHT	COLOR
49147-103	Thermal Blanket, Leno Weave	66" x 90"	100% Cotton	3.0 LB	White
49148-010	Thermal Blanket, Leno Weave	66" x 90"	100% Cotton	2.5 LB	White
49148-610	Thermal Blanket, Leno Weave	66" x 90"	100% Cotton	2.1 LB	White
49149-010	Thermal Blanket, Leno Weave	66" x 90"	55/45 Cotton/Poly	2.5 LB	White



*Herringbone Spread Blanket*

## Herringbone Spread Blankets

- Smooth, attractive herringbone design looks great as a spread
- Heavy-duty closed lock weave increases life and decreases likelihood of snags and shrinkage
- Available in 55/45 cotton/poly blend in white

CAT NO.	DESCRIPTION	SIZE	BLEND	WEIGHT	COLOR
49146-090	Blanket, Herringbone Weave	66" x 90"	55/45 Cotton/Poly	2.65 LB	White

## Chill Stopper Snag Free blanket

CAT NO.	DESCRIPTION	SIZE	BLEND	WEIGHT	COLOR
49150-017	Blanket, Closed Weave/Snag Free	66" x 90"	100% Cotton	2.5 LB	White



Entwine Bedspread

## Entwine Bedspread

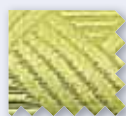
The new Entwine bedspread offers a modern, unisex design! Offered in five new colors that will provide customers a fresh palette of colors with a home-like feel.

- New, modern design – offering customers a unisex pattern
- New, fresh colors to match most decors
- Blended poly/cotton fabric provides durability
- Throw style for varying mattress widths, 36" or 42" and fitted style for a more secure fit on a 36" mattress
- Light weight bedspread pairs nicely with a fleece blanket for added warmth

CAT NO.	DESCRIPTION	SIZE	BLEND	UOM	CASE
49153-	Bedspread Entwine Fitted	68" x 96" x 9"	60/40 Poly/Cotton	Each	12
49153T-	Bedspread Entwine Throw	76" x 110"	60/40 Poly/Cotton	Each	12

Add color code when ordering.

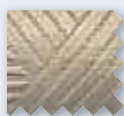
### PRINT/COLOR SWATCHES



Apple  
(APP)



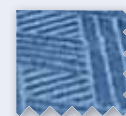
Picante  
(PIC)



Oatmeal  
(OAT)



Cinnamon  
(CIN)



Blue Haze  
(HAZ)



Colours Bedspreads

## Colours Bedspreads

With its classic square quilt pattern and an inviting color palette, the Colours bedspread easily complements your existing décor and turns the bed into a comfortable, warm space. Colours features a construction that is durable for processing, but also provides a soft resting place. It is the perfect weight for year-round layering and the bias binding on the edges adds a crisp, clean finish. Colours will give any bed an extra layer of style.

100% Poly Quilted Fitted Bedspread available in five modern rich colors:

- Green, Neutral, Rust, Chocolate and Aqua
- Medium weight, 4 lbs

CAT NO.	DESCRIPTION	SIZE	BLEND	UOM	CASE
49021-GRN	Bedspread, Colours, Quilted, Green	72" x 108"	100% Polyester	Each	8
49021-NEUT	Bedspread, Colours, Quilted, Neutral	72" x 108"	100% Polyester	Each	8
49021-RUST	Bedspread, Colours, Quilted, Rust	72" x 108"	100% Polyester	Each	8
49021-CHOC	Bedspread, Colours, Quilted, Chocolate	72" x 108"	100% Polyester	Each	8
49021-AQUA	Bedspread, Colours, Quilted, Aqua	72" x 108"	100% Polyester	Each	8



Mattress Pads

## Mattress Pads

- Flat mattress pads designed to lie on top of the mattress
- Flannel fabric provides added comfort on a traditional mattress or crib mattress
- Provided in a variety of sizes and finishes

CAT NO.	DESCRIPTION	SIZE	BLEND	FINISH	WEIGHT
50650-017	Mattress Pad, Flannel, Whipstitch	17" x 18"	55/45 Cotton/Poly	Whipstitch	0.19 LB
50650-273	Mattress Pad, Flannel, Whipstitch	27" x 36"	55/45 Cotton/Poly	Whipstitch	0.67 LB
50650-398	Mattress Pad, Flannel, Whipstitch	39" x 76"	55/45 Cotton/Poly	Whipstitch	1.9 LB
50645-386	Mattress Pad, Flannel, Bias Bound	36" x 72"	50/50 Cotton/Poly	Bias Bound	1.64 LB
50645-171	Mattress Pad, Flannel, Bias Bound	17" x 18"	50/50 Cotton/Poly	Bias Bound	0.19 LB



Felt Mattress Pads

## Felt Mattress Pads

- Durable, washable felt mattress pads
- Available in flat or anchor band styles
- Made of polyester fiber

CAT NO.	DESCRIPTION	SIZE	BLEND	FINISH	WEIGHT
MP-10001F	Mattress Pad, Felt	36" x 80"	100% Polyester	Flat	7.5 OZ
MP-150001F	Mattress Pad, Felt	36" x 80"	100% Polyester	Flat	9.5 OZ
MP-10002F	Mattress Pad, Felt	39" x 75"	100% Polyester	Flat	7.5 OZ
MP-150002F	Mattress Pad, Felt	39" x 75"	100% Polyester	Flat	9.5 OZ
MP-10003F	Mattress Pad, Felt	39" x 80"	100% Polyester	Flat	7.5 OZ
MP-150003F	Mattress Pad, Felt	39" x 80"	100% Polyester	Flat	9.5 OZ
MP-20025AB	Mattress Pad, Felt	36" x 80"	100% Polyester	Anchor Band	7.5 OZ
MP-250025AB	Mattress Pad, Felt	36" x 80"	100% Polyester	Anchor Band	9.5 OZ
MP-20026AB	Mattress Pad, Felt	39" x 75"	100% Polyester	Anchor Band	7.5 OZ
MP-250026AB	Mattress Pad, Felt	39" x 75"	100% Polyester	Anchor Band	9.5 OZ
MP-20027AB	Mattress Pad, Felt	39" x 80"	100% Polyester	Anchor Band	7.5 OZ
MP-250027AB	Mattress Pad, Felt	39" x 80"	100% Polyester	Anchor Band	9.5 OZ



Knit-Cote Protectors

## Knit-Cote Pillow Protectors

- Crack-resistant nylon tricot and vinyl construction
- Pliable with soft feel of knit
- Water resistant

CAT NO.	DESCRIPTION	SIZE	BLEND	FINISH	WEIGHT
50244	Pillow Protector, Knit-Cote, Zippered	21" x 27"	Vinyl Coated Nylon Tricot	Zippered	0.4 LB





Merit Trio Terry

## Merit Trio Collection

- Made of thick, soft absorbent 100% cotton
- Three-cam design moves more terry loops to center pile for more plushness

CAT NO.	DESCRIPTION	SIZE	WEIGHT/DZ
52628-612	Washcloth, Triple Cam	12" x 12"	0.75 LB
52628-616	Washcloth, Triple Cam	12" x 12"	1 LB
52630-630	Towel, Hand Triple Cam	16" x 27"	3.0 LB
52634-650	Towel, Bath Triple Cam	20" x 40"	5.0 LB
52634-655	Towel, Bath Triple Cam	20" x 40"	5.5 LB
52634-662	Towel, Bath Triple Cam	22" x 44"	6.25 LB
52634-680	Towel, Bath Triple Cam	24" x 48"	8.0 LB



Elegance Plus Terry Towels and Washcloths

## Elegance Plus Collection

- Highly durable 86/14 cotton/polyester 16 singles construction
- Ideal combination of comfort, strength and durability
- Elegance Plus has 5 wider cams, moving more terry loops to center pile for more plushness

CAT NO.	DESCRIPTION	SIZE	WEIGHT/DZ
52228-608	Washcloth, Blend, w/ 5 Cam	12" x 12"	0.5 LB
52228-612	Washcloth, Blend, w/ 5 Cam	12" x 12"	0.75 LB
52228-616	Washcloth, Blend, w/ 5 Cam	12" x 12"	1 LB
52230-530	Hand Towel, Blend, w/ 5 Cam	16" x 27"	3.0 LB
52234-055	Towel, Bath, Blended, w/ 5 Cam	20" x 40"	5.5 LB
52234-562	Towel, Bath, Blended, w/ 5 Cam	22" x 44"	6.25 LB
52234-580	Towel, Bath, Blended, w/ 5 Cam	24" x 48"	8.0 LB
52234-510	Towel, Bath, Blended, w/ 5 Cam	24" x 50"	10.5 LB
52624	Bath Mat, Picture Frame Cam	20" x 30"	7 LB

## Checkmate Terry

- Soft and absorbent 85/15 cotton/polyester blend terry
- Quick-drying and durable blend designed to withstand institutional laundering
- 12 singles ring-spun yarn construction
- Checkmate pattern offers a plush, nice aesthetic appeal

CAT NO.	DESCRIPTION	SIZE	WEIGHT/DZ
52528-524	Washcloth, Checkered Pattern	13" x 13"	1.5 LB
52530-530	Towel, Hand Checkered Pattern	16" x 27"	3.0 LB
52534-580	Towel, Bath Checkered Pattern	24" x 48"	8 LB
52534-510	Towel, Bath Checkered Pattern	24" x 50"	10.5 LB
52534-515	Towel, Bath Checkered Pattern	27" x 54"	15 LB



Checkmate Terry Towels

## Specialty Terry

CAT NO.	DESCRIPTION	SIZE	WEIGHT	FABRIC	QTY/EA
47974-567B	Bath Towel w/ 5 Blue Cam	22" x 46"	6.75 LB	85/15 Cotton/Poly	300
47974-635	Towel, Bath, HOSPITAL PROPERTY	20" x 40"	5.0 LB	100% Cotton	300



"Hospital Property" Woven Towels



Utility Towels

## Utility Towels

CAT NO.	DESCRIPTION	SIZE	WEIGHT	FABRIC	QTY/CASE
47973-32G	Bar Mop, Gold Stripe	16" x 19"	32 OZ	100% Cotton	1200
47973-32B	Bar Mop, Blue Stripe	17" x 20"	32 OZ	100% Cotton	1200
47973-28B	Bar Mop, Blue Stripe	17" x 20"	28 OZ	100% Cotton	1200
47973-12B	Cloth, Cleaning, Blue Terry	12" x 12"	12 OZ	100% Cotton	1200
47973-WHI	Bar Mop, Ribbed, White Terry	16" x 19"	28 OZ	100% Cotton	1200
47973-24W	Bar Mop, White	17" x 20"	24 OZ	100% Cotton	1200
47853-010	Towel, Crash, Red Border	17" x 31"	32 OZ	100% Cotton	600
47880-630	Towel, Glass, Red Stripe	15" x 28"	16 OZ	100% Cotton	1200
47881-614	Towel, Kitchen, Herring Bone, Green Stripe	14" x 24½"	21 OZ	100% Cotton	1200
47973-007	Towel, Woven White, Lint Free	30" x 34"	24 OZ	100% Cotton	500
47973-005	Towel, Dish, Assorted Colors	15" x 25"	28 OZ	100% Cotton	300
641300	Washcloth, Brown	12" x 12"	12 OZ	100% Cotton	1200
47973-18M	Cloth, Dish, Stripe/Check, Assorted Colors	14" x 14"	18 OZ	100% Cotton	300

## Disposable Kits for EMS Use

Don't let your valuable linen walk out the ED door without an alternative for the EMS teams!

We offer a few solutions that not only will save your linens, but offer the EMS teams a warming option with faster vehicle turnover and cleanup as well. We've incorporated our proven Thermoflect® Heat Reflective Technology® into an EMS Transport Cocoon™ and patient transfer pack.



NOT FOR  
USE IN MRI



Adult Thermoflect®  
Transport Cocoon™



Pediatric Thermoflect®  
Transport Cocoon™

### The Transport Cocoon™

The Transport Cocoon uses science instead of electricity to protect EMS patients during transport.

- Zero footprint
  - Vacuum sealed flat to slide under mattress
- Super Absorbent Inner Core
  - Easily measure fluid loss
  - Speeds vehicle turnover
- Patent-pending material
  - Non-conductive
  - Non-linting
  - Ultra lightweight
  - Strong and supple



5400-210 TF Patient Transfer/Discharge Kit

### The Thermoflect® Patient Transfer/Discharge Kit

Contains 4 EMS items pre-packaged in a tight pouch that is easy to store and handle.

Contents include:

- 1 Thermoflect® Patient Blanket
- 1 Nonwoven Blue Adult Patient Gown
- 1 Super-Soft Evolution™ Nonwoven Blue Stretcher Sheet
- 1 Super-Soft Evolution™ Nonwoven Blue Pillowcase

## Thermoflect® EMS Kits

CAT #	DESCRIPTION	SIZE	PACKAGING	QTY/CASE
5170-200	Thermoflect® Transport Cocoon™	Adult	Individually Vacuum Sealed	10 EA
5170-150	Thermoflect® Transport Cocoon™	Pediatric	Individually Vacuum Sealed	10 EA
5100-250	Thermoflect® Papoose	Infant	5 EA/BG, 10 BG/CA	50 EA
5400-210	Thermoflect® Patient Transfer/Discharge Kit	Adult	1 EA/BG, 25 EA/CA	25 EA





# pillows

Designing, building and delivering the highest quality healthcare pillows and bedding items continues to define our mission and has for more than 30 years. Our trusted products are made in the USA and include the broadest and most beneficial choices for patient care. Partner with us to provide the right balance of comfort and performance.

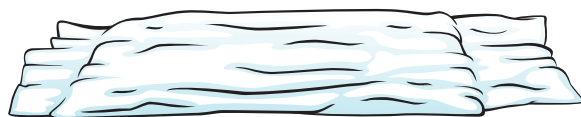




The Pillow Factory's Case Saver™ program allows more time for the work that matters most, patient care.

The Case Saver compression process removes air from pillows, allowing a smaller case to hold more pillows. A convenient dispenser feature is ideal for tight and space constrained storage areas.

Our compression method allows the loft to immediately expand and fully return to the original level within one hour. In coordination with our product features, consideration for freight cost savings, staff time in product handling, and space savings in delivery areas further support our position as the provider of the most beneficial healthcare product choices for patient care.



*Fully Compressed*



*Partially Expanded*



*Fully Expanded*





Our Fresh Start™ personal pillows set the quality and performance standards for the entire industry. Patients will find maximum comfort on these single-patient-use pillows with breathable non-woven covers, and staff can trust that fresh pillows are ideal for cross-contamination concerns.

Furthering our commitment to customer inventory management needs, our Case Saver™ program assists in saving time, space and waste. Pillows are individually compressed, wrapped, and dispense easily from high capacity cases.

- Soft and breathable non-woven ticking
- 100% recycled ecoCLOUD® fiberfill is environmentally responsible
- Individually wrapped and compressed for clean, simplified storage
- Convenient dispenser-box packaging
- Easily configured for propping



## FreshStart™ Personal Pillows

CATALOG NO.	LOFT LEVEL	CUT SIZE	COLOR	CS QTY.
51107-551	Standard	17" x 23"	White	12
51107-552	Medium	17" x 23"	White	12
51107-441	Medium	17" x 23"	White	12
51107-553	Standard	19" x 25"	White	12
51107-652	Medium	19" x 25"	White	12
51107-443	Medium	21" x 27"	White	12
51107-653	Full	21" x 27"	White	12
51107-753	Full Plus	21" x 27"	White	12

## Specialty Post-Surgical Pillows

CATALOG NO.	DESCRIPTION	CUT SIZE	COLOR	CS QTY.
51107-024	Prop/Hugger Pillow	13" x 17"	White	24
513	Hugger Pillow w/Pillowcase	13" x 17"	White	24



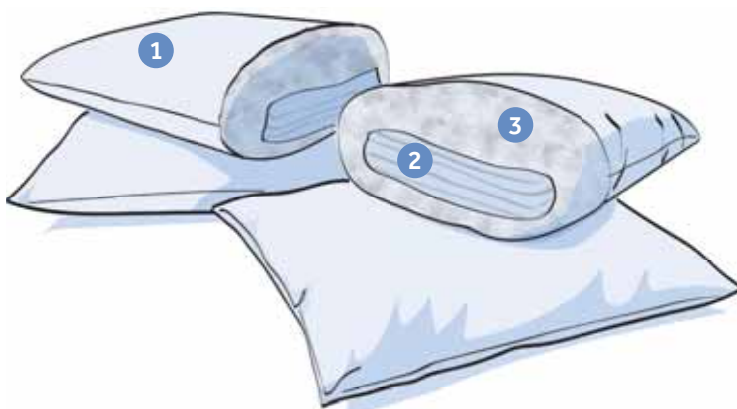


## Reusable Pillows

Choosing the right pillow is more important than ever before when considering increased patient satisfaction, with necessary performance and protection. The Pillow Factory offers the largest selection of reusable pillows in the market, using high-quality, differentiated materials to meet every need. Our re-engineered production process focuses on consistent distribution of the loft across the surface of the pillow in order to minimize pressure & avoid irritation or injury on the ears and across the occipital region

Your patients will rest in comfort and support, while your materials manager will enjoy the value of multiple-use pillows. Environmental Services and Infection Prevention will appreciate the benefit of soft surface products that can withstand appropriate cleaning and disinfection. Our pillows stand up for durability and protection without stepping down in comfort.

### SRC® Soft Resilient Core



1. Fluid resistant and fluid-proof covers easily wipe clean for extended pillow use.
2. The SRC®, Soft Resilient Core, system extends pillow life by maintaining a supportive structure longer.
3. 100% recycled ecoCLOUD® fiberfill is environmentally responsible.



## RevolutionaryCARE®

With quick loft recovery, exceptional value, and longevity, the RevolutionaryCARE® pillow will revolutionize expectations for years to come.

- Ideal for use as a head pillow or for positioning & offloading
- Polyester ticking supports ease in use & care
- Product supports safety & infection control initiatives with impregnated anti-microbial protection, fluid proof ticking, and flame retardant components

CATALOG NO.	LOFT LEVEL	SIZE	COLOR	CS QTY.	SRC
51140-317	Full	13" x 17"	Blue	24	N
51140-925	Full	19" x 25"	Blue	18	Y
51140-B25*	Full	19" x 25"	Blue	18	Y
51140-127	Full Plus	21" x 27"	Blue	18	Y

\*style has breathe strip for enhanced air flow

## eEasyCare

With three layers of material, the EasyCare™ pillow offers maximum protection & durability with engineered breathability.

- Ideal for use as a head pillow
- Soft, wipeable ticking is fluid proof, flame retardant and treated with anti-microbial agent
- An incorporated 1" breathe strip promoted maximum air flow & heat reduction

CATALOG NO.	LOFT LEVEL	SIZE	COLOR	CS QTY.	SRC
51157	Full	13" x 17"	White	24	N
51150	Full	19" x 25"	White	12	Y
51153	Full Plus	21" x 27"	White	12	Y



## CAREGUARD —PLUS®—

CareGuard Plus® pillows offer the trusted features of the traditional industry vinyl, but with enhanced functionality & superior protection.

- Ideal for use as a head pillow
- Product supports safety & infection control initiatives with impregnated anti-microbial protection, fluid resistant ticking, and flame retardant components
- PVC and phthalate free (including DEHP)

CATALOG NO.	LOFT LEVEL	SIZE	COLOR	CS QTY.	SRC
51171	Full Plus	19" x 25"	Blue	12	N
51109-011	Full	19" x 25"	Blue	12	Y
TPF-40005	Full	21" x 27"	Blue	12	N
51110-851	Full	21" x 27"	Blue	12	Y
TPF-8000	Full Plus	19" x 25"	Tan	12	N
51170	Full Plus	19" x 25"	Tan	12	Y
TPF-8004	Full Plus	21" x 27"	Tan	12	N
51173	Full Plus	21" x 27"	Tan	12	Y
TPF-8010	Full Plus	19" x 25"	White	12	N
TPF-8014	Full Plus	21" x 27"	White	12	N

SPECIALTY					
51174	Full	13" x 17"	Blue	24	N
51175	Full Plus	17" x 23"	White	12	Y
51110-2060	Standard	20" x 60"	Tan	4	Y



## Brilliance® PILLOWS

Brilliance® pillows offer a better-than-home experience option for patient, staff and visitor use. Our durable cotton ticking and enhanced fiberfill make this pillow laundry friendly, as it becomes more comfortable after each wash.

- Ideal for use as a head pillow for the ultimate patient, visitor, and staff "better than home" experience
- Durable cotton ticking and enhanced fiberfill makes this pillow laundry and processing friendly
- Hypoallergenic

CATALOG NO.	LOFT LEVEL	SIZE	COLOR	CS QTY.
HP-850	Medium	20" x 26"	White Damask Stripe	12
HP-840	Full Plus	20" x 26"	White Damask Stripe	12
HP-820	Standard	20" x 26"	White Damask Stripe	12

\* Chlorine bleach is not suggested for use with this product, hydrogen peroxide is preferred



## Pro-BARRIER®

Pro-Barrier® pillows are an economical choice for patient care areas where the useful life is not expected to be long, but fluid protection is required.

- Ideal for use as a head pillow in multi-patient, high-traffic areas
- Economically priced to meet budget needs where the useful life is not anticipated to be long
- Fluid resistant, polypropylene ticking is flame retardant
- Hypoallergenic

CATALOG NO.	LOFT LEVEL	SIZE	COLOR	CS QTY.	SRC
51108-107	Full	17" x 23"	Blue	12	N
51108-105	Full	19" x 25"	Blue	12	N
51108-101	Full	21" x 27"	Blue	12	N





# incontinent care

Encompass understands that in providing incontinent products for your patients you are looking for long-lasting and hardworking products that help your patients maintain a sense of dignity. All of our products are designed to provide unmatched protection and comfort for the patients in your facility. Our products come in many attractive colors and mature prints that will enhance your facility and please your patients.

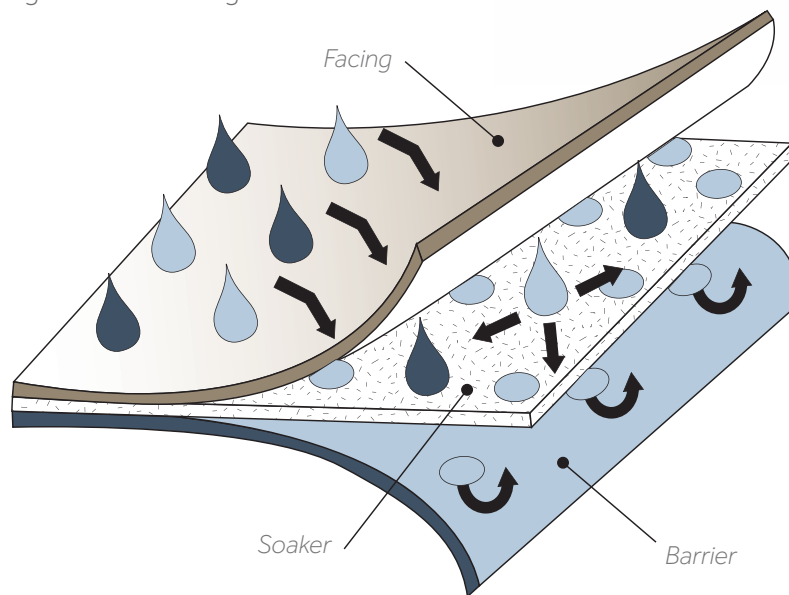
## Incontinent Care

### PATIENT CARE INCONTINENT PADS

Moisture management is important to successful skin integrity in the acute care setting. Quality linens also have a factor in reducing the amount of bunching, pressure, shearing and friction to which patients are exposed.

Not all incontinent pads, whether reusable or disposable, perform the same. Incontinent pads were originally designed to protect the sheets and mattress rather than the patient. Many pads in use today still adhere to this historical design.

We are now more aware of the extent that excess moisture, bunching, pressure, shearing and friction from bed linens and related incontinent products can contribute to skin breakdown and discomfort. A well-designed incontinent pad, along with good nursing care, can help to mitigate all those negative influences.



### CONSTRUCTION

Almost all underpads are constructed of a top or "facing" layer, a middle "soaker" layer, and a bottom "barrier" layer. Each has a job to do:

**FACING** — get moisture away from skin; provide soft, comfortable surface

Modern, all-polyester fabrics provide the softness that cotton does, but are designed to wick moisture from the top facing into the soaker level. For best patient care, we recommend a high-performing all-polyester facing, instead of one made from cotton fabric.

**SOAKER** — attract, hold and disperse moisture over multiple voids

A good patient care pad will have a minimum of 35% rayon, which is more effective at drawing the moisture into the soaker and quickly spreading it horizontally. Disposable incontinent pads generally use polymer gels to capture liquids. However, once activated, the gel usually cannot absorb or disperse more liquids on multiple voids like a reusable pad can.

**BARRIER** — keep moisture inside pad; keep pad from slipping down the bed

The best patient care pads "bond" their barrier layer to the quilted facing and soaker levels. Bonding ensures that the pad will not bunch on itself, and also makes it more durable and wrinkle-free during the laundering process.



Fusion® Underpad

## FUSION®

### Fusion® is the Next Generation of Patient Care Underpads

Superior to its current quilted reusable counterparts, Fusion is a square, fused, unquilted underpad that offers the best in reusable bed linen protection. By eliminating the potential for pressure points, Fusion creates a smooth surface for a patient's sensitive skin to rest. With skin integrity at the forefront of its mandate, Fusion helps protect the patient's skin from moisture, shear and friction.

The Fusion Patient Care Underpad:

- Provides superior patient care
- Helps reduce pressure points
- Requires less repositioning
- Supports performance of specialty mattresses
- Promotes a healthy micro-climate for patients' skin
- Promotes total linen protection
- Is an eco-friendly alternative to disposable incontinent pads

CAT #	SIZE	FACING	SOAKER (POLY/RAYON)	CORNERS	BARRIER
50560-9100	35" x 35"	Turquoise Knit 100% Poly	65/35	Round	Blue
50560-9118	34" x 45"	Turquoise Knit 100% Poly	65/35	Round	Blue





*DermaCare Underpad*

## DermaCare

### DermaCare is the Leading Patient Care Underpad

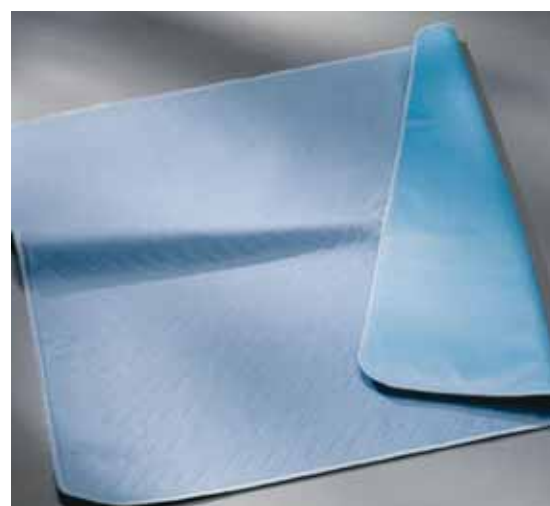
- Top of the line patient care reusable underpad
- Laminated ultra thin pad to help maximize patient care by lying flat to help prevent pressure ulcers
- Ultra lightweight 14.1oz, DermaCare absorbs up to 4 times its own weight (1,500cc)
- Brushed backing to ensure no movement under the patient to prevent bunching which can lead to pressure ulcers
- Impermeable barrier offers excellent linen protection, eliminating the need for multiple layers and reducing soiled linen

CAT NO.	SIZE	FACING	SOAKER (POLY/RAYON)	CORNERS	BARRIER
50560-9026	34" x 36"	Turquoise Knit 100% Poly	65/35	Round	Blue
50560-9028/QB	34" x 45"	Turquoise Knit 100% Poly	65/35	Round	Blue

## Aurorra Underpad

- Heavy-duty, fast-drying, long-lasting underpad is ideal for the institutional laundry environment
- Nonbrushed 100% polyester honeycomb facing is less susceptible to burning in high heat environments
- Round corners are less abrasive to patients' skin
- Zigzag quilted design ensures pad retains a flat, smooth profile without bunching or pleating

CAT NO.	SIZE	FACING	SOAKER (POLY/RAYON)	CORNERS	BARRIER
50560-1102	34" x 36"	Blue Honeycomb 100% Poly	65/35	Round	Blue
50560-11022/DB	34" x 36"	Blue Honeycomb 100% Poly	65/35	Round	Blue



*Aurorra Underpad*



Laminated Meridian Underpad

Laminated Meridian Underpad

- Blue, 100% synthetic facing
- Round corners
- Brushed barrier
- Laminated construction

CAT NO.	SIZE	FACING	SOAKER (POLY/RAYON)	CORNERS	BARRIER
50560-9010/Q	34" x 36"	Blue Knit 100% Poly	65/35	Round	Blue



CareGuard® Underpads

CareGuard® Underpad

- Soft, microfiber facing provides comfort for the patient
- Good wicking and absorbency performance
- Round corners will lay more smoothly on the mattress



CAT NO.	SIZE	FACING	SOAKER (POLY/RAYON)	CORNERS	BARRIER
50560-330	34" x 36"	White 100% Microfiber Poly	65/35	Round	Dark Blue



Whootex™ Underpads

## Whootex™ Underpads

- Good wicking & absorbency
- Surface offers durable properties of a synthetic rich product
- Softer hand and less pilling
- Remains whiter and lays flatter
- Does not get "cold/wet" feeling like cotton rich pads do when wet
- Plaid facing offered



CAT NO.	SIZE	FACING	SOAKER (POLY/RAYON)	CORNERS	BARRIER
50560-830	34" x 36"	White 100% Microfiber Poly	65/35	Square	Dark Blue
50560-888	34" x 36"	Plaid 100% Microfiber Poly	65/35	Round	Dark Blue
50560-528Q	34" x 45"	White 100% Microfiber Poly	65/35	Square	Dark Blue



Fusion® Chair Pads

## Chair Pads

CAT NO.	DESCRIPTION	SIZE	FACING	SOAKER	BARRIER
50560-844	Whootex Plaid	17" x 24"	Plaid 100% Microfiber	65/35	Blue
50560-020	IBEX	17" x 24"	White IBEX 80/20 Cotton/Poly	65/35	Blue
50560-9105	Fusion	17" x 24"	Turquoise 100% Polyester	65/35	Blue
50560-9123	Fusion	23" x 23"	Turquoise 100% Polyester	65/35	Blue

## Adult Clothing Protectors

Our adult clothing protectors offer protection and quality at any price point as well as dignity and style. With a wide array of patterns, fabrics and types of closures, this line is sure to meet all needs – whether it's our soft plush terry or our unique Premiere clothing protectors constructed of a highly absorbent, highly protective polyester rayon blend. Stripes or solids, we supply the colors and prints that will make anyone feel right at home.



*Impressions Americana  
Clothing Protectors*

### Impressions Clothing Protectors

CAT NO.	DESCRIPTION	SIZE	MATERIAL	COLOR/PRINT	CLOSURE
46091-131	Americana	18" x 34"	100% Cotton Terry	Americana Stripe	Hook & Loop
46091-132	Americana	18" x 34"	100% Cotton Terry	Americana Stripe	EZ Tie
46091-136	Americana	22" x 36"	100% Cotton Terry	Americana Stripe	Hook & Loop
46091-137	Americana	22" x 36"	100% Cotton Terry	Americana Stripe	EZ Tie
46091-145	Americana	22" x 42"	100% Cotton Terry	Americana Stripe	EZ Tie



*Synergy Clothing Protectors*

### Synergy Clothing Protectors

CAT NO.	DESCRIPTION	SIZE	MATERIAL	COLOR/PRINT	CLOSURE
46093-11BB	Aurorra	18" x 36"	100% Polyester	Blue Stuart	Button Hole
46093-11BVY	Aurorra	18" x 36"	100% Polyester	Vineyard	Button Hole
46093-3SB	Premiere Terry Barrier	18" x 36"	90/10 Ctn/Poly	Solid Light Blue	Neck Snaps
46093-3SW	Premiere Terry Barrier	18" x 36"	90/10 Ctn/Poly	White	Neck Snaps
46093-7SB	Premiere Barrier	18" x 36"	65/35 Poly/Rayon	Blue Stuart	Neck Snaps
46093-8SB	Premiere Barrier	18" x 36"	65/35 Poly/Rayon	Blue Stuart	Side Snaps
639103S	Terry Barrier	18" x 36"	90/10 Cotton/Poly	Solid Blue	EZ Tie



## Essentials Clothing Protectors

CAT NO.	DESCRIPTION	SIZE	MATERIAL	COLOR/PRINT	CLOSURE
46094-161	Mochastripe	18" x 34"	100% Cotton Terry	Blue/Yellow/Purple/Beige Striped	Hook & Loop
46094-162	Mochastripe	22" x 36"	100% Cotton Terry	Blue/Yellow/Purple/Beige Striped	Hook & Loop
46094-163	Mochastripe	18" x 34"	100% Cotton Terry	Blue/Yellow/Purple/Beige Striped	EZ Ties
46094-164	Mochastripe	22" x 36"	100% Cotton Terry	Blue/Yellow/Purple/Beige Striped	EZ Ties



*Essentials Mochastripe  
Clothing Protectors*



*Dignity Clothing Protector*

## Dignity Clothing Protector

CAT NO.	DESCRIPTION	SIZE	MATERIAL	CLOSURE
734C25-230**H	Lapkin/Dignity Protector	28" x 30"	100% Polyester	Snaps

Colors: Brown (BR), Burgundy (C), Hunter (H), Ivory (I), Sandalwood (J), Navy (N), Gold (O), Rust (RS), and White (W)



*Assorted Merit Clothing Protectors*

## Merit Clothing Protectors

CAT NO.	DESCRIPTION	SIZE	MATERIAL	COLOR/PRINT	CLOSURE
46090-620	White Terry	18" x 34"	100% Cotton Terry	White w/ White Binding	Hook & Loop
46090-62B	Blue Terry	18" x 34"	100% Cotton Terry	Blue w/ Blue Binding	Hook & Loop
46092-213S	White Terry	15" x 33"	100% Cotton Terry	White w/ Yellow Binding	Hook & Loop
46092-214S	White Terry	15" x 33"	100% Cotton Terry	White w/ Blue Binding	Hook & Loop
46092-214L	White Terry	22" x 36"	100% Cotton Terry	White w/ Blue Binding	Hook & Loop
46092-220L	White Terry	22" x 36"	100% Cotton Terry	White w/ White Binding	EZ Ties



# hyperbaric

From pillows and bedding to patient apparel, Encompass' line of hyperbaric products and apparel are designed to meet the unique challenges of a hyperbaric environment. These products are made of 100% cotton for comfort and breathability and meet or exceed National Fire Protection Association guidelines for use in hyperbaric oxygen treatment units.



Hyperbaric Linens

## Hyperbaric Linens

- 100% cotton fabric for comfort and breathability
- 100% cotton hem thread and labels – often overlooked details
- Purple thread hems to quickly identify and separate hyperbaric products from your other inventory

CAT NO.	DESCRIPTION	SIZE	COLOR	HEM COLOR
47902-616	Washcloth, 1 LB	12" x 12"	White	Purple
47902-662	Bath Towel, 6.25 LB	22" x 44"	White	Purple
49502-455	Flat Sheet	72" x 108"	Misty Green	Purple
49502-490	Draw Sheet	54" x 90"	Misty Green	Purple
49502-410	Pillowcase	34" x 42"	Misty Green	Purple
49240	Blanket, Bath, 1.4 LB	70" x 90"	Unbleached	Purple

## Hyperbaric Pillows

- Comfortable for patient use and safe for hyperbaric environments
- 100% cotton ticking exterior and cotton fill
- Distinctive striped exterior allows for easy identification
- Machine washable and dryable

CAT NO.	DESCRIPTION	SIZE	COLOR	CS QTY.
51110-022	Pillow	21" x 27"	Striped	12

## Hyperbaric Apparel

- 100% cotton for comfort and breathability with 100% cotton thread seams and labels for added safety
- Purple thread for easy separation from other inventory
- Same versatile styles and fit as our traditional apparel lines

### Patient Apparel

CAT NO.	DESCRIPTION	SIZE	COLOR
45202-XL	Patient Gown	XL	Misty Green
45202-3XL	Patient Gown	3XL	Misty Green
45202-10XL	Patient Gown	10XL	Misty Green
45602-407	Pajama Pants	Large	Misty Green
45602-409	Pajama Pants	XL	Misty Green

### PRINT/COLOR SWATCHES



Hyperbaric Patient Apparel





# EVS support

Encompass offers our healthcare customers the tools to provide patients, visitors and staff with safe and clean environments. Through our partnership with UMF Corporation, we offer the PerfectCLEAN® Environmental Cleaning System, which includes mops, wipers, and other cleaning products and accessories. Encompass also offers a variety of hamper bags for use in your facility.

PerfectCLEAN is made from micro-denier fibers, with built-in antimicrobial protection to reach into invisible crevices to remove microscopic pathogens from environmental surfaces. The germs are then eliminated in your laundry cycle when using chlorine bleach.





## All-Purpose Wipers

The PerfectCLEAN® All-Purpose Wiper penetrates invisible crevices in surfaces to cut out dirt and grime – the Wiper “traps & removes” contaminants, absorbs and concentrates those contaminants. Color coding for distinguishing between patient rooms, bathrooms, ICUs, and ORs helps reduce cross-contamination.

CAT NO.	DESCRIPTION	COLOR
47985-ORA	All-Purpose Wiper 12" x 12"	Orange
47985-BLU	All-Purpose Wiper 12" x 12"	Blue
47985-YEL	All-Purpose Wiper 12" x 12"	Yellow
47985-GRA	All-Purpose Wiper 12" x 12"	Gray
47985-GRN	All-Purpose Wiper 12" x 12"	Green
47986-ORA	All-Purpose Wiper 16" x 16"	Orange
47986-BLU	All-Purpose Wiper 16" x 16"	Blue
47986-YEL	All-Purpose Wiper 16" x 16"	Yellow
47986-GRA	All-Purpose Wiper 16" x 16"	Gray
47986-GRN	All-Purpose Wiper 16" x 16"	Green
47987-GRE	Super Wiper 12" x 12"	Green
47994-100	Wiper Bucket	Orange
47994-130	Wiper Bucket	Blue
47994-140	Wiper Bucket	Green
47994-200	Wiper Bucket Lid	Gray

## Flat Mops

Developed to withstand the rigors of the healthcare commercial laundry, the PerfectCLEAN Flat Mops are the only products to meet and exceed durability testing by the largest commercial laundries in the United States and Canada.

Understanding the cross-contamination and Hospital Acquired Infection (HAI) issues in hospitals and nursing homes, UMF developed the first line of color-coded, chlorine-stable products and the ONEperROOM™ concept, which can eliminate the risk of cross-contamination. PerfectCLEAN Flat Mops are made from the highest grade micro-denier fiber and contain the highest concentration of fiber resulting in unrivaled performance and are also further distinguished by their patented Built-in Antimicrobial Product Protection.

CAT NO.	DESCRIPTION	COLOR
47980-BLU	Flat Mop 11"	Blue
47980-ORA	Flat Mop 11"	Orange
47983-BLU	Flat Mop 18"	Blue
47983-GRN	Flat Mop 18"	Green
47983-ORA	Flat Mop 18"	Orange
47978-GRA	Flat Mop Scrubber 18"	Gray
47994-000	Bucket with Lid	Yellow/Gray Lid



## Fringed Flat Mops

The PerfectCLEAN® Fringed Flat Mop is exactly the same as the standard Flat Mop but with a fringe. Simply mist PerfectCLEAN to remove dried spots and stains.

## Tube Mop

Designed to replace the old-fashioned traditional string mops, the PerfectCLEAN Tube Mop redefines "industrial strength cleaning," ideal for areas where soil load is very high. This high absorption, high performance PerfectCLEAN Tube Mop consists of 32 tubes per side. The head band is chlorine-stable, extremely durable and easy to launder.

CAT NO.	DESCRIPTION	COLOR
47984-18B	Fringe Mop (Hook & Loop) 18"	Blue
47984-18GRA	Fringe Mop (Hook & Loop) 18"	Gray
47984-36B	Fringe Mop (Hook & Loop) 36"	Blue
47984-36GRA	Fringe Mop (Hook & Loop) 36"	Gray
47984-36W	Dust Mop (Wire) 36"	Red
47984-48W	Dust Mop (Wire) 48"	Green
47979-YEL	Microfiber Tube Mop	Gray/Yellow
47979-BLU	Microfiber Tube Mop	Blue/Blue
47979-GRN	Microfiber Tube Mop	Green/Yellow
47993-200	Tube Mop Handle	Blue
47993-220	Tube Mop Handle	Green
47993-230	Tube Mop Handle	Gray
47994-300	Tube Mop Claw	Blue
47994-320	Tube Mop Claw	Green
47994-330	Tube Mop Claw	Gray



## Accessories

PerfectCLEAN Accessories support all of the challenging areas in environmental surface cleaning.

With the Easy Grip Flexible Duster and Handle, difficult places and narrow spaces can be easily reached. The Easy Grip Flexible Duster can be manipulated into virtually any shape. Ideal for hard to reach places. The PerfectCLEAN Orange Mitt helps reduce cross-contamination by isolating the cleaning of the commode. The Multi-Use Glove can be used for IV poles, curtain pulls, bed rails, chair rails, and any other odd shaped surfaces – whatever you touch, you clean.



CAT NO.	DESCRIPTION
47994-BLU	Finish Applicator, Blue
47998-000	Flexible Duster
47988-BLUF	Duster Cover, Blue, Fringe
47988-BLUC	Duster Cover, Chenille, Blue
47988-GRAC	Duster Cover, Chenille, Gray
47988-GRNC	Duster Cover, Chenille, Green
47989-ORA	Mitt, Orange
47997-ORA	Scrub Clean Sponge, Orange
47995-100	Glove, Multi-Use

## Flat Mop Frames

Heavy-duty construction designed to meet the challenges of the commercial cleaning industry. The ONLY hardware with a Limited Lifetime Warranty.

- Heavy-duty hardened aluminum
- Hard-coat anodization

## Easy-Grip Telescopic Handle

Designed for efficiency and comfort, the telescopic and ergonomic adjustable handles are lightweight and adjustable to "fit you." Developed for the rigors of the commercial markets, these handles will provide a lifetime of service.

- Two closed-cell, non-absorbent, EVA foam Ergo-Grips for ease of use and comfort; easily cleaned and disinfected.

CAT NO.	DESCRIPTION
47990-511	Frame, for 11" Flat Mop
47990-518	Frame, for 18" Flat Mop
47996-360	Frame, for 36" Microfiber Mop
47993-100	Handle, Easy-Grip Telescopic, Straight
47993-300	Handle, Easy-Grip Short 7"
47993-310	Handle, Easy-Grip Straight 19"

## Superior Design & eXecution

The PerfectCLEAN® SDX bucketless mop system was developed to tackle common market complaints of traditional fluid mops – leaking and clogging, easily breakable handles, and low worker efficiency.

The PerfectCLEAN SDX bucketless mop system is offered in two models – SDX50 and SDX60 – to accommodate different user heights. This system includes color-coded bottles that promote "best practice" environmental hygiene processes to reduce cross-contamination.

- Transitions heavy-duty chores to a light-duty task
- Unique High Strength Uni-Tube Core construction for improved strength and durability
- Bleach & QUAT safe with DRY-VALVE™ and chemical resistant tubing
- Interchangeable color-coded bottles for safe chemical management, increased productivity and reduced risk of cross-contamination
- Integrated non-slip ball grip
- Large easy-pull trigger and integrated trigger guard
- Compatible with all PerfectCLEAN frames

CAT NO.	DESCRIPTION	COLOR
47993-450	50" Bucketless Mop System (Frame Not Included)	Gray/Yellow
47993-460	58" Bucketless Mop System (Frame Not Included)	Gray/Yellow
47993-4GN	Refill Bottle, 21 Oz.	Green



## SafeCare Hamper Bags

- Fluid resistant 100% polyester
- Flip-top hood for bag closure
- Straight bottom for stability
- Durable nylon tape handles at the side and bottom for easy and reliable transporting

CAT NO.	DESCRIPTION	SIZE (W x D x L)	COLOR	QTY/CS
51890-180	18" Flip Top Bag	18" x 30" x 37"	Yellow	12 EA
51890-250	25" Flip Top Bag	25" x 44" x 37"	Yellow	12 EA
51890-180B	18" Flip Top Bag	18" x 30" x 37"	Blue	12 EA
51890-250B	25" Flip Top Bag	25" x 44" x 37"	Blue	12 EA



SafeCare Hamper Bag

## Water Soluble Hamper Bags

- Labor saver – no need to remove items from bag
- Bags easily dissolve in hot water into biodegradable solution
- Heavy-duty; can hold wet linen many hours prior to wash

CAT NO.	DESCRIPTION	SIZE	COLOR	QTY/CS
51868-51H	Standard Weight Bag	26" x 33"	Clear	100 EA
51868-57H	Standard Weight Bag	28" x 39"	Clear	100 EA
51868-58H	Standard Weight Bag	36" x 39"	Clear	100 EA
51868-71H	Heavy Duty Bag	26" x 33"	Clear	100 EA
51868-77H	Heavy Duty Bag	28" x 39"	Clear	100 EA
51868-78H	Heavy Duty Bag	36" x 39"	Clear	100 EA

## Impervious Hamper Bags

- Available with envelope-style top or drawcord
- These bags control odors and leaks to help keep your facility fresh and clean
- Sealed seams prevent leakage of fluids and odors
- Protects staff from infections
- Color-coded seams for fast and simple sorting of linens
- Easy to wash and reuse

CAT NO.	DESCRIPTION	SIZE (W x D x L)	COLOR	QTY/CS
51860-LB1	Hamper Bag, Envelope Top, White color-code	18" x 30" x 40"	White	24 EA
51860-LB2	Hamper Bag, Envelope Top, Green color-code	25" x 40" x 40"	White	24 EA
51860-LB3	Hamper Bag, Drawcord, Blue color-code	18" x 30" x 40"	Light Green	24 EA
51860-LB4	Hamper Bag, Drawcord, Red color-code	25" x 40" x 40"	Light Green	24 EA
51880-180	Hamper Bag 18", Flip Top, Straight Bottom	18" x 30" x 40"	Ceil Blue	48 EA
51880-250	Hamper Bag 25", Flip Top, Straight Bottom	25" x 40" x 44"	Ceil Blue	48 EA
51870-180	Hamper Bag 18", Flip Top, Round Bottom	18" x 30" x 40"	Ceil Blue	48 EA
51870-250	Hamper Bag 25", Flip Top, Round Bottom	25" x 40" x 44"	Ceil Blue	48 EA



Drawcord Hamper Bag





Nylon Hamper Bag

## Nylon and Nylon Mesh Hamper Bags

- 200 denier nylon construction (for solid nylon bags)
- Self-closing with elastic cord
- Various colors available for easy sorting

CAT NO.	DESCRIPTION	SIZE	QTY/CS
51852-180_	Elastic Cord Opening, Straight Bottom	18" x 30" x 40"	12 EA
51852-250_	Elastic Cord Opening, Straight Bottom	25" x 40" x 40"	12 EA
51854-180_	Elastic Cord Opening, Round Bottom	18" x 30" x 40"	12 EA
51854-250_	Elastic Cord Opening, Round Bottom	25" x 40" x 40"	12 EA
182800	Hamper Bag, Mesh Drawcord	18" x 24"	12 EA



Poly/Cotton Blend Hamper Bag

## 50/50 Poly/Cotton Hamper Bags

- Affordable yet extremely durable
- Heavy-duty drawcord closure
- Straight bottom

CAT NO.	DESCRIPTION	SIZE	COLOR	QTY/CS
51862-180N	Drawcord Straight Bottom	18" x 30" x 40"	Natural	12 EA
51862-250W	Drawcord Straight Bottom	25" x 40" x 44"	White	12 EA

## 100% Cotton Duck Hamper Bags

- 100% cotton duck cloth construction
- All stress points reinforced
- Top and bottom handles for easy unloading

CAT NO.	DESCRIPTION	SIZE	QTY/CS
51800-010	Flip Top, Square Bottom	18" x 30" x 40"	12 EA
51800-210	Flip Top, Square Bottom	25" x 40" x 40"	12 EA

## Hamper Stands

CAT NO.	DESCRIPTION	SIZE
5055	Hamper Stand, Adjustable, with Foot Pedal and Cover	Fits 18" x 25"

## Soiled Linen Carts

CAT NO.	SIZE	HOLDERS
LCC-2000-1	19" wide x 15" long x 37" high	1
LCC-2000-2	19" wide x 26" long x 37" high	2
LCC-2000-3	19" wide x 39" long x 37" high	3
LCC-2000-4	19" wide x 53" long x 37" high	4

Laundry Bags and Foot Pedals sold separately



Soiled Linen Cart



# healthcare décor

Encompass creates healthcare environments that welcome you from the moment you enter the room. Every texture, color and detail is designed with your patients' comfort and care in mind. We offer a wide selection of custom cubicle curtains, drapery and bedspreads, and by manufacturing our custom drapery products in the USA, we are able to offer our customers the very best quality with minimal lead time.



## Whether you are just replacing a few cubicle curtains, or are looking for full healthcare décor and installation assistance, we are here to help.

Encompass Healthcare Décor has been providing healthcare décor services and installation, custom manufacturing as well as off-the-shelf solutions for cubicle and privacy curtains, window treatments and bedspreads for over 30 years in healthcare.

And because we specialize in healthcare, we understand the unique challenges that patient satisfaction, infection prevention, staffing and reimbursement issues can impose on your facility.

We can help you coordinate the large fabrics in your rooms – Privacy Curtains, Window Treatments, Bedspreads and Shower Curtains – to compliment and support the overall look and feel of your facility, or give it a new look!

Our in-house estimating experts can assist you with fabric selection, samples and cost projections for renovation or new construction projects. Then, we put the industry's most extensive, experienced network of installation pros to work to ensure the highest quality, appearance and lasting durability with all our treatments. From an initial consultation to project completion,

there is no job too small or too big. We welcome the opportunity to work with you on your project. Over our many years in business, we have developed strong affiliations with many of the finest fabric manufacturers in the design industry. We maintain a library with an extensive collection of fire retardant fabric colors, textures, antimicrobial construction, and special finishes that complement any interior.



## Now, changing cubicle curtains is a Snap!

With our new Classics Snap Cube program, spend less time and effort replacing or cleaning soiled curtains.

If changing out privacy curtains in your facility is a difficult and time-consuming affair, we have a solution for you.

Encompass' Snap Cube program uses curtain fabric that snaps to the mesh hanging from the ceiling track. In a room with an 8-foot ceiling, this means that your staff may not need ladders to take down and put up curtains, as the panels snap off the mesh right at head height.

Additionally, Snap Cube curtains can be ordered in six-foot-wide panels for the most flexible use throughout your facility, allowing for one panel style to meet all your needs.

We can make Snap Cube panels in the cost-effective Classics colors below, or any other fabric to meet your design needs.



### How does it work?

- It attaches to your existing and new track systems. Simply combine the mesh and choice of panel that best meet your needs.
- Durable, antimicrobial mesh is ordered either in 68" sections or to the full length of your track.
- Order your 68" panels in the fabric of your choice.
- Hang curtains by snapping them onto the mesh. When change is required, simply toss in with the soiled linen to be washed by the laundry and returned with your clean linen.

### Additional Benefits:

- No ladder needed for normal ceiling heights.
- Universal panels – can be used throughout the facility.
- If damaged or stained – only need to replace that single panel, not entire curtain.
- Fire Retardant Fabric – lasts for the life of the curtain.
- Many fabric choices to coordinate with your facility's color scheme.
- 5" overlap on each panel, maintains privacy while allowing several panels to function as one curtain.



### CLASSICS COLORS



*Cream*



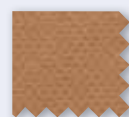
*Indigo*



*Oat*



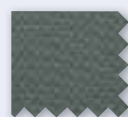
*Curry*



*Nutmeg*



*Saffron*



*Rosemary*





*Coordinated Bedspreads*

## Coordinated Bedspreads

Whether you are looking to update or completely redesign a patient room, our bedspreads can provide that finishing touch. Our fabric library offers a vast selection of both stocked and custom fabrics to choose from, and all our available quilted or non-quilted.

## Faux Wood Blinds

Faux wood blinds are a cost-effective way to add a rich, warm feeling to your facility. They are easy to maintain and meet or exceed all fire codes. Our faux wood blinds are available in a several sizes with many options for colors and finishes. Natural wood blinds are also available.



*Solar Shades*

## Solar Shades

Our solar shades are made with healthcare facilities in mind. Not only do they provide privacy in patient areas, they also help reduce the fading of furniture and textiles by diffusing light. Easy to install and maintenance free, solar shades complement any décor and can be used in combination with other window treatments and drapery.

## Vertical & Horizontal Blinds

Blinds add privacy to patient areas and improve patient comfort by allowing complete flexibility for filtering light. Encompass offers a wide range of colors, styles and finishes to suit your décor perfectly. Durable and virtually maintenance free, blinds can be an economical way to decorate and add interest to a room.

## Hardware

We carry the latest in hardware that will complement your choice of drapery. Our selections are designed to withstand the rigors of a patient facility and feature carriers that make draperies easy to remove and replace. Most of our drapery is offered with baton or cord controlled.

## Window Treatments

Since we manufacture all of our window treatments in our own factories, we ensure you receive the same high quality product and service levels that you have come to expect. Our experienced staff can help you create virtually any style of window covering you desire. We offer all of the basic treatments, such as Pinch Pleat, Accordia Fold, and Ripple Fold draperies. All of our fabrics are selected specifically for institutional application as well as overall aesthetics, and can be matched to other fabrics in the room, such as cubicle curtains, bedspreads and upholstery.

Encompass also offers a wide variety of top name shades and blinds that can be used alone or in conjunction with one of our more elaborate treatments. Complement any window with one of our decorative treatments that include swags, cascades, and cornices to create a more unique look for your facility.



*Pinch-Pleated Drapery*

### Pinch-Pleated Drapery

Our three finger pinch-pleat custom fit drapes create a beautiful finish to any window or room. Encompass manufactured pinch-pleat drapes are constructed with 100% fullness, 4" top and bottom hems, and 1½" side hems. The finished treatment comes complete with hooks for immediate insertion in rods.



*Accordia-Fold Drapery*

### Accordia-Fold Drapery

Building in popularity for its ease of removal and placement, the Accordia-Fold drapery hangs like the pinch-pleat drapery but is affixed to the rod using snaps, not hooks. The finished treatment comes complete with snaps for immediate installation.



*Ripple-Fold Drapery*

### Ripple-Fold Drapery

Our Ripple-Fold drapery, like the Accordia-Fold, is affixed to the rod using snaps. The folds of the drape are rounded using the placement of the snaps, creating a soft and flowing feel to the fabric. The snap construction makes these a perfect fit for areas where a drape may be removed or pulled on frequently.

## Valences



Mock Roman Shade  
with Decorative  
Cording



Cornice with Nail Heads  
and Banding



Box Pleat with  
Banding



Box Pleat



Rod Pocket



Arched Rod  
Pocket



Rod Pocket

## Shower Curtains

Complement your patient rooms with our wide selection of shower curtains. Choose from our attractive palette of colors and surfaces, with fabric and vinyl options available. For extended curtain life, these curtains are antimicrobial, intrinsically fire retardant, and have a water repellent finish. All curtains feature a magnetic weighted bottom, and a hookless alternative is also available. Standard sizes are stocked, and custom sizes can be manufactured to your specifications.



*Suede Vinyl Shower Curtains*

### Suede Vinyl Shower Curtains

- Elegant suede texture made of 10-gauge vinyl
- Smooth inside for easy run-off
- Hangs snugly inside the tub

CAT NO.	COLOR	SIZE
49003-010	Peach	36" x 72"
49003-012	Light Blue	36" x 72"
49003-013	Champagne	36" x 72"
49003-014	White	36" x 72"
49003-015	Light Green	36" x 72"
49003-016	Yellow	36" x 72"
49003-017	Cream	36" x 72"
49003-018	Pink	36" x 72"
49003-019	Navy	36" x 72"
49003-020	Beige	36" x 72"
49003-060	Peach	72" x 72"
49003-061	Beige	72" x 72"
49003-062	Light Blue	72" x 72"
49003-063	Champagne	72" x 72"
49003-064	White	72" x 72"
49003-065	Light Green	72" x 72"
49003-066	Yellow	72" x 72"
49003-067	Cream	72" x 72"
49003-068	Pink	72" x 72"
49003-069	Navy	72" x 72"
49003-070	Beige	72" x 72"

### Regency Vinyl Shower Curtains

- 9-gauge vinyl
- Traditional plisse embossing
- Flame retardant (passes NFPA 701)

CAT NO.	COLOR	SIZE
49005-011	White	36" x 72"
49005-012	Beige	36" x 72"
49005-061	White	72" x 72"
49005-062	Beige	72" x 72"



*Regency Vinyl Shower Curtains*

### Sure-Chek™ Shower Curtains

- Controlled release antimicrobial treated
- Crisp linen embossing available with or without mesh
- Stain resistant and flame retardant
- Specially made to your measurements

CAT NO.	COLOR	SIZE
49002-011	Blush	36" x 72"
49002-016	Blue	36" x 72"
49002-018	Jade	36" x 72"
49002-023	Green	36" x 72"
49002-025	Smoke	36" x 72"
49002-024	Black	36" x 72"
5023601	White	36" x 72"
5023602	Dune	36" x 72"
5023603	Fawn	36" x 72"
5023604	Clear	36" x 72"
49002-061	Blush	72" x 72"
49002-076	Blue	72" x 72"
49002-078	Jade	72" x 72"
49002-073	Green	72" x 72"
49002-075	Smoke	72" x 72"
49002-074	Black	72" x 72"
5107201	White	72" x 72"
5107202	Dune	72" x 72"
5107203	Fawn	72" x 72"
5107204	Clear	72" x 72"





Vintaff Shower Curtains

## Vintaff Shower Curtains

- Medium weight 6-gauge vinyl curtain
- Textured surface and smooth back for easy run-off

CAT NO.	COLOR	SIZE
49000-010	Apricot	36" x 36"
49000-011	Light Blue	36" x 36"
49000-012	Beige	36" x 36"
49000-013	Light Green	36" x 36"
49000-014	Yellow	36" x 36"
49000-015	White	36" x 36"
49000-016	Frosty	36" x 36"
49000-060	Apricot	72" x 72"
49000-061	Light Blue	72" x 72"
49000-062	Beige	72" x 72"
49000-063	Light Green	72" x 72"
49000-064	Yellow	72" x 72"
49000-065	White	72" x 72"
49000-066	Frosty	72" x 72"

## Plastic Double Open Ends

- Unique patented design carries outer curtain and liner on the same hook allowing easy changeover of either
- Modern design works with straight or curved rods

CAT NO.	STYLE	COLOR
49009-110	Tandem	Clear
49009-210	Tandem	White
49009-310	Tandem	Champagne

Sold by the dozen



Nylon Shower Curtains

Double Open Ends Hook

## Nylon Shower Curtains

- Woven 200 denier nylon
- Water and stain repellent
- Machine washable

CAT NO.	COLOR	SIZE
49004-010	Peach	36" x 72"
49004-011	Beige	36" x 72"
49004-012	Champagne	36" x 72"
49004-013	Gray	36" x 72"
49004-014	Blue	36" x 72"
49004-015	White	36" x 72"
49004-016	Dusk Rose	36" x 72"
49004-017	Pink	36" x 72"
49004-018	Green	36" x 72"
49004-060	Peach	72" x 72"
49004-061	Beige	72" x 72"
49004-062	Champagne	72" x 72"
49004-063	Gray	72" x 72"
49004-064	Blue	72" x 72"
49004-065	White	72" x 72"
49004-066	Dusk Rose	72" x 72"
49004-067	Pink	72" x 72"
49004-068	Green	72" x 72"

## Plastic Snap Tear Drop Shower Curtain Hooks

- Unique patented design carries outer curtain and liner on the same hook allowing easy changeover of either
- Modern design works with straight or curved rods

CAT NO.	STYLE	COLOR
49009-100	Plastic Snap Tear Drop	Clear
49009-200	Plastic Snap Tear Drop	White
49009-300	Plastic Snap Tear Drop	Champagne

Sold by the dozen

# Pillow Care & Maintenance



*Care Guard Pillows*

In support of any infection prevention practice, pillows and their covers should be routinely cleaned, either in a hot water laundry cycle or through the use of a product that is EPA-registered to kill bacteria on those surfaces that can't be laundered.

### **WHEN DEVELOPING A PILLOW CARE POLICY, CONSIDERATIONS MAY INCLUDE THE FOLLOWING:**

- A cleaning & inspection process should occur on a frequent and routine basis.
- Damaged or heavily soiled pillows should be removed immediately.
- Proper cleaning of good condition pillows will support the reduced risk for the spread of infection.

### **BELOW IS A LIST OF THE COMMON DISINFECTANTS USED IN A HEALTHCARE ENVIRONMENT FOR SOFT SURFACE CLEANING.**

1. Phenolics: Benzyl-4-chlorophenol, Amylphenol, Phenylphenol
2. Halogens: Hypochlorites, Bleach
3. Alcohols: Ethyl Alcohol (ethanol), Isopropyl Alcohol (isopropanol)
4. Aldehydes: Glutaraldehyde Quaternary Amines: Ammonium Chloride (benzyl and ethylbenzyl)

Active ingredients should be validated with pillow manufacturers before use.

## Washing Instructions

In order to maintain the look, function and durability of your Encompass products, the following wash instructions should be followed for the items in this catalog. The wash procedures presented here are recommended by the products' manufacturers. Following these suggested guidelines will help keep products looking better and promote a longer product life. If a particular product is not included in the following instructions, follow the instruction tag on the product itself.

### REUSABLE APPAREL AND FLAT GOODS

#### General Instructions for All Products

- All new textile products should be laundered prior to use.
- Do not overload washers or dryers. To ensure thorough cleaning, washers and dryers should be loaded to allow freedom of movement for the garments.
- The following recommendations should be used as guidelines. Deviations should be made at the discretion of the laundry professional, based on the specific requirements, supplies, equipment and experience.

#### Color and Apparel Wash

1. Launder apparel and dark colors separately from whites.
2. Do not use chlorine bleach.
3. Machine wash on warm setting. Temperatures not to exceed the following: Apparel – 120°F.
4. Rinse thoroughly.
5. Tumble dry at temperatures not to exceed 250°F.
6. Remove promptly from dryer and fold or hang to help prevent wrinkling.

#### White Wash (Flat Goods)

1. Machine wash on warm setting. Do not exceed 160°F.
2. When bleaching, follow the manufacturer's instructions.
3. Rinse thoroughly.
4. Tumble dry at hot or cotton setting. Temperature should not exceed 250°F.
5. Remove promptly from dryer and fold or iron or press to help prevent wrinkling.

### WASH INSTRUCTIONS FOR PROFESSIONAL LABWEAR

In order to maintain the look of garments, we recommend you follow our guidelines for proper laundering. Deviations should be made at the discretion of the laundry professional, based on specific requirements, supplies, equipment and experience.

#### Colors

Launder colors separately from whites. Do not use bleach. Machine wash on a warm setting not to exceed 120°F. Rinse thoroughly. Tumble dry at temperatures not to exceed 250°F. Remove promptly from the dryer and fold or hang to help prevent wrinkling.

#### Whites

Machine wash on a warm setting not to exceed 160°F. When bleaching, follow the manufacturer's instructions. Rinse thoroughly. Tumble dry at hot or cotton setting. Temperature should not exceed 250°F. Remove promptly from dryer and fold or iron or press to help prevent wrinkling.

### REUSABLE FLUID-RESISTANT FABRICS

Because of the repellent qualities of these fabrics, the following wash and rinse cycles are required:

Operations	Time	Level	Temp.	Supplies/100 lbs.
1. Flush	3 min.	High	Cold	
2. Flush	3 min.	High	Cold	
3. Break	7 min.	Low	160°F	8 oz. nonionic detergent; 8 oz. alkali
4. Suds	7 min.	Low	160°F	4 oz. nonionic detergent
5. Rinse	2 min.	High	140°F	
6. Rinse	2 min.	High	120°F	
7. Rinse	2 min.	High	100°F	
8. Rinse	2 min.	High	Cold	
9. Sour	5 min.	Low	Cold	Sour to pH 6.0

1. A thorough rinse is essential to remove all surfactants. Residual surfactants will adversely affect the repellent properties of these fabrics.
2. Use of softeners is not recommended as they may adversely affect the repellent properties of these fabrics.
3. SafeCare fabrics have inherent stain-resistant properties; therefore, bleaching should not be necessary. Always ensure that no chlorine remains in the fabrics after washing and that no chlorine residue is present in the washing or drying equipment.
4. After washing, garments should be thoroughly heat dried. Repellency characteristics are enhanced through heat and pressing. Press with a cool iron.

*Products described in this catalog are made of imported and domestic materials.*

## A

Absorbent Towels .....	57
Adolescent Patient Apparel.....	24
Adult Clothing Protectors.....	86-87
Atlantis/Pacifica Collection .....	11
Aurora Underpad .....	83

## B

Baby Boggans.....	25
Back Table Covers .....	55
Bar Mop.....	72
Bariatric Apparel .....	10, 12, 14
Bariatric Sheets.....	64
Bassinet Sheets .....	26-27
Bath Blankets .....	66
Bath Mat .....	71
BED & BATH.....	58-73
Bath Blankets.....	66
Bedspreads .....	69
Blankets .....	67-68
Draw Sheets.....	59-60
Knitted Bed Linens .....	61-65
Mattress Pads .....	70
Pillow Protectors.....	70
Pillowcases.....	59-62, 64
Pillows.....	74-79
Sheeting.....	59-65
Terry.....	71-72
Bedspreads.....	69
Behavioral Health Gowns.....	14
Bibs, Adult.....	86-87
Birthing Sheets.....	63
Blankets .....	67-68
Blankets, Receiving .....	26
Blinds .....	99
Brilliance Pillows .....	79

## C

C2 Gown Collection .....	9
CareGuard Underpad.....	84

CareGuard Plus Pillows .....	78
Chair Pads.....	85
Classics Cubicle Curtains .....	98
Clinical Resources .....	6
Clothing Protectors .....	86-87
Colored Sheeting Collection .....	60
Coordinated Collections .....	9-13
Cover Gowns.....	49
Crash Towel .....	72
Crib Sheets.....	27
Cubicle Curtains.....	97-98
Custom OR Drapes .....	55

## D

DermaCare Underpad .....	83
Design Services .....	97-101
Diapers, Infant .....	26
Discovery Collection.....	21-22
Dish Towel.....	72
Disposable Pillows.....	75-76
Drapery.....	97-100
Draw Sheets .....	59-60

## E

Easy Care Pillows.....	78
Elegance Plus Terry.....	71
ENVIRONMENTAL SERVICES SUPPORT .....	90-95
Hamper Bags .....	94-95
Hamper Stands.....	95
Microfiber Mops.....	91-93
Microfiber Cloths.....	91
PerfectCLEAN .....	91-93
Essentials Labcoats .....	39
Essentials Pediatric Apparel...	23-24
Essentials Scrub Apparel .....	29-31
Exam Capes.....	10, 12, 17
Exam Gowns.....	17-18
ExecutorNET .....	7

## F

Fall Prevention .....	15-16
Falling Leaves Patient Gowns .....	16
Felt Mattress Pads.....	70
Flannel Weight Pediatric Apparel .....	23
Flat Mops .....	91-93
Fluid-Resistant Cover Gowns .....	48-49
Fluid-Resistant Labwear.....	43, 45
FreshStart Pillows.....	76
Fusion Underpad .....	82
Fusion Chairpad.....	85

## G

Galaxy Collection .....	24
Global Select Sheeting .....	59
Gowns, Isolation.....	48-49
Gowns, OR.....	52-54
Gowns, Patient .....	9-18
Gowns, Pediatric .....	21-26

## H

Hamper Bags.....	94-95
Hamper Stands .....	95
HEALTHCARE DÉCOR .....	96-103
Cubicle Curtains .....	97-98
Design Services .....	97-101
Shower Curtains .....	102-103
Window Treatments .....	100-101
Herringbone Spread Blankets .....	68
Huck Towels.....	57
HYPERBARIC .....	88-89
Hyperbaric Apparel .....	89
Hyperbaric Linens .....	89
Hyperbaric Pillows .....	89

## I

INCONTINENT CARE.....	80-87
Adult Clothing Protectors .....	86-87



Chair Pads .....	85
Underpads .....	81-85
Infant Apparel.....	25-26
Infant Bedding .....	26-27
Infant Diapers .....	26
Infant Sheets .....	26-27
Isolation Gowns .....	48-49
IV Gowns.....	9-16

## K

Kitchen Towel .....	72
Knit-Cote Protectors .....	70
Knitted Bed Linens.....	61-65

## L

Labcoats.....	39-46
Lac-Mac Gowns.....	51-53
Links Spread Blankets.....	67
Long-Sleeve Scrub Apparel.....	36

## M

Mammography Apparel .....	17
Mattress Pads.....	70
Mayo Stand Covers .....	55
Men's Scrubs .....	29-37
Mental Health Gown .....	14
Meridian Underpad.....	84
Merit Terry.....	71
Meta Labwear.....	40-42, 44-45
Microfiber Mops .....	91-93
Microfiber Cloths .....	91
Modessa Patient Gowns .....	13
Monet Collection.....	10
Mops .....	91-93
Muslin Sheeting.....	59

## N

Nonwoven Pediatric Bedding .....	27
Nonwoven Gowns .....	13, 18
Nonwoven Robes .....	18

Nursing Mother's Apparel.....	10, 12, 17
----------------------------------	------------

## O

OR APPAREL & BEDDING .....	50-57
Absorbent Towels.....	57
Back Table Covers.....	55
Huck Towels .....	57
Lac-Mac Gowns .....	52-53
Mayo Stand Covers.....	55
OR Drapes.....	55
OR Gowns .....	52-54
OR Sheeting.....	57
OR Towels .....	57
OR Wrappers.....	56
R-MOR-Tex® Gowns.....	52-53
OR Drapes .....	55
OR Gowns.....	52-54
OR Sheeting .....	57
OR Towels .....	57
OR Wrappers .....	56

## P

Pajamas.....	10-12
PATIENT APPAREL, ADULT .....	8-19
Atlantis/Pacifica Collection.....	11
Bariatric Apparel .....	10, 12, 14
Behavoiral Health Gown .....	14
C2 Gown Collection.....	9
Coordinated Collections .....	9-13
Exam Capes .....	10, 12, 17
Exam Gowns .....	17-18
Falling Leaves Gowns .....	16
Gowns .....	9-18
Hyperbaric Apparel .....	89
IV Gowns .....	9-16
Mental Health Gowns .....	14
Modessa Patient Gowns.....	13
Monet Collection .....	10
Nonwoven Gowns .....	13, 18

Nonwoven Robes.....	18
Nursing Mother's Gown .....	17
Pajamas .....	10-12
Patient Gowns .....	9-18
Robes.....	10-12, 18-19
Shooting Star Collection.....	12
Specialty Apparel.....	14
Specialty Sized Apparel.....	10, 12, 14
Starburst Collection .....	9
Thermoflect Patient Gowns.....	13
Women's Apparel.....	10, 12, 17
Patient Apparel, Pediatric & Infant .....	20-26
Patient Positioner.....	64-65
PEDIATRIC & INFANT .....	20-27
Adolescent Patient Apparel .....	24
Baby Boggans .....	25
Discovery Collection .....	21-22
Essentials Collection .....	23-24
Galaxy Collection.....	24
Infant Apparel .....	25-26
Infant Bedding.....	26-27
Infant Diapers .....	26
Nonwoven Pediatric Bedding....	27
Pediatric Patient Apparel ....	20-25
Space Adventures Collection.....	23
Pediatric Patient Apparel .....	20-25
PerfectCLEAN®.....	91-93
Performance Muslin Sheeting .....	59
PerformanceRX Sheeting.....	59
Personal Pillows.....	75-76
Pillow Protectors .....	70
Pillowcases .....	59-61, 64
PILLOWS.....	74-79
Brilliance Pillows.....	79
CareGuard Plus Pillows.....	78
Easy Care Pillows .....	78
FreshStart Pillows .....	76

Hyperbaric Pillows .....	89
Personal Pillows .....	76
Post-Surgical Pillows .....	76
Pro-Barrier Pillows .....	79
Reusable Pillows .....	77-79
RevolutionaryCARE Pillows .....	78
Post-Surgical Pillows .....	76
Precaution Gowns .....	48-49
Pro-Barrier Pillows .....	79

## R

Receiving Blankets .....	26
Regal Touch Sheeting .....	60
Reusable Pillows .....	77-79
RevolutionaryCARE Pillows .....	78
R-MOR-Tex® Gowns .....	52-53
Robes .....	10, 12, 18-19

## S

SafeCare Fluid-Resistant Gowns ...	54
SafeGuard Labcoats .....	43
Sateen Draw Sheets .....	59
Scrub Apparel .....	29-37
Seersucker Robes .....	19
Sheeting .....	59-65
Shooting Star Collection .....	12
Shower Curtain Hooks .....	103
Shower Curtains .....	102-103
SnapCube Cubicle Curtains .....	98
Solar Shades .....	99
Space Adventures Collection .....	23
Specialty Apparel .....	10, 12, 14

Specialty Pillows .....	76
Specialty Sized Gowns .....	10, 12, 14
Specialty Terry .....	72
STAFF APPAREL .....	28-49
Cover Gowns .....	48-49
Essentials Collection .....	29-31
Fluid-Resistant Cover Gowns .....	48-49
Fluid-Resistant Labwear .....	43, 45
Isolation Gowns .....	48-49
Labcoats .....	39-47
Long Sleeve Scrubs .....	36
Mens Scrubs .....	29-37
Meta Labwear .....	40-42, 44-45
Precaution Gowns .....	48-49
SafeGuard Labcoats .....	43
Scrub Apparel .....	29-37
Scrub Jackets .....	31, 34
Scrub Pants .....	31, 33-34, 36-37
Scrub Tops .....	29-37
Synergy Collection .....	32-37
Unisex Scrubs .....	29-37
Womens Scrubs .....	35
X-Static Labcoats .....	44
Yellow Gowns .....	48-49
Starburst Collection .....	9
Stretcher Sheets .....	63
Swift Patient Positioner .....	64-65
Synergy Scrubs .....	32-37

## T

Tartan Plaid Underpads .....	85
------------------------------	----

Teen Patient Apparel .....	24
Terry .....	71-72
Terry Robes .....	19
Thermal Blankets .....	68
Thermoflect Heat Reflective Technology .....	13, 73
Thermoflect Patient Care .....	73
Thermoflect Patient Gowns .....	13
Three-Armhole Exam Gowns .....	18
Three-Armhole Isolation Gowns ..	49
Toe-Pleat Knit Top Sheet .....	62
Towels .....	71-72
Tube Mops .....	92

## U

UltraKnit Sheeting .....	61-63
UltraLinks Blankets .....	67
UltraSlide Bottom Sheets .....	65
Utility Towels .....	72

## W

Wash Instructions .....	104-105
Whootex Underpads .....	85
Window Treatments .....	100-101
Women's Exam Apparel ....	10, 12, 17
Women's Scrubs .....	35
Wrappers .....	56

## X

X-Static Labcoats .....	44
-------------------------	----

## Y

Yellow Gowns .....	48-49
--------------------	-------

All brands are trademarks of Encompass Group, LLC, except for the following:

Lac-Mac™, R-MOR-Tex®, and Paragon™ are trademarks of Lac-Mac Limited.

X-Static® is a trademark of Noble Biomaterials, Inc

PerfectCLEAN®, ONEperROOM™, PerfectCLEAN® SDX, and Dry-Valve™ are trademarks of UMF Corporation.

Modessa™, Fusion®, DermaCare™, Aurora™, Meridian™, Whootex™, Swift®, UltraSlide™, UltraKnit™, SleepKnit™, Revolution Linen System™, and MIP® are trademarks of MIP, Inc.

Sure-Check® is a trademark of Aberdeen Road Company.

# Standard Terms and Conditions of Sale

## ORDER PROCESS

Purchased orders may be placed directly with our Customer Service Team in our National Service Center in McDonough, GA. The general number is 1-800-245-4636. Please contact your local Encompass representative for assignment to a specific customer service rep and direct call-in and fax numbers, as well as e-mail addresses. Order may also be placed through EDI with proper set-up.

## Establishing an Account

Prior to placing a first order, new customers must complete a new account application and be assigned a customer number. This process can be initiated by calling our National Service Center at 1-800-245-4636 and asking for Customer Service. Upon approval of application, a credit limit will be established.

## Representation

Customers will be assigned to a local (or in-house) representative based on geography. Please contact our National Service Center for the name and contact information of your local Encompass Representative.

## Pricing

Pricing is quoted effective at the time of sale. Pricing agreements can be exercised with an effective future termination date. If customer is a GPO member or affiliate, customer must notify Encompass prior to order being placed of any GPO membership in order to receive appropriate GPO pricing benefits. In some cases a GPO Letter of Commitment or Letter of Designation may be required to receive those benefits.

## Sales Tax

State and local sales taxes are charged and collected on every sale unless the proper tax exemption documentation has been provided to our credit department.

## Freight

Unless otherwise indicated, freight is not included in pricing (FOB Warehouse). Freight on mill-direct items is prepaid and added.

## Payment Terms

Standard Payment Terms are Net 30 from date of invoice, payable in US dollars.

## Minimum Order Size

Single purchase orders less than \$300 total will have a \$25 Minimum Order Charge applied.

## RETURN POLICY

Encompass will gladly accept returns and issue credits on product(s) that the customer received damaged and /or shipment of the wrong product (within 90 days) and issue pick-up.

Products being returned because of customer excess, wrong color, size, decision changes etc., will receive a 15% restocking fee – customer pays freight back to Encompass Group.

## Encompass Group will authorize the return of all products in salable condition with the following exceptions:

- Products not purchased from Encompass.
- Products purchased more than 3 months prior to the return request.
- Special or custom products made to customers, specifications.
- Products returned in defaced or other than original packaging.

- All mill direct products that cannot be returned to the supplier.
- Products that have been processed and therefore not resalable.
- Products that have been discontinued.
- Carton/Case less than (Unit of measure sale)

## Authorization

- An Encompass Sales Rep or Customer Service Representative must authorize all returns. Encompass Customer Service will fax the customer the RMA to be attached to the return. Authorization will only be valid for 45 days. All products returned without prior approval and required RMA will be subject to a 35% re-stocking fee.

## Return Procedure

Each return must include the following information:

1. Purchaser name and address
2. Encompass invoice number
3. Invoice date
4. Purchaser purchase order number
5. Quantity, catalog number and description of items
6. Reason for return

## Return Policy Procedures

- Shortage Claims – Report all short shipment to Customer Service within 72 hours of receipt of shipment. Have the packing list available for shipment identification.
- Shipping Discrepancies – Report all shipping inaccuracies to Customer Service within 72 hours of receipt of shipment. Have the packing slip available for shipment identification.
- Freight Damage – Upon receipt of shipment check all packages for visual damage. If found, note on freight bill/signature page or have driver note on freight bill/signature page. All damage, visible or concealed, must be reported to Customer Service within 72 hours of receipt.

## Defective Products

Report defective products to Customer Service immediately. Credit will be issued after the product has been inspected and determined that the product was defective at the time of manufacturing. Replacement product will be shipped and invoiced prior to defective goods being returned.

## Warranties and Liabilities

Encompass warrants that any product it manufactures or has made according to its specifications, will meet the claims set forth in its labeling and packaging requirements. Unless the product is used in accordance with the directions on its labeling, this warranty is void and of no effect. Any other products distributed by Encompass only carry any warranties made by their manufacturers and are not warranted by Encompass in any manner whatsoever.

THERE ARE NO OTHER EXPRESSED OR IMPLIED WARRANTIES, INCLUDING ANY WARRANTY OF MERCHANTABILITY OR FITNESS FOR A PARTICULAR PURPOSE. THE SOLE OBLIGATION OF ENCOMPASS AND, PROVIDER'S AND ITS PROVIDER FACILITIES' EXCLUSIVE REMEDY FOR BREACH OF ANY WARRANTY SHALL BE, AT THE OPTION OF ENCOMPASS, TO REPAIR OR REPLACE THE PRODUCT. ENCOMPASS SHALL NOT BE LIABLE FOR PROXIMATE, INCIDENTAL OR CONSEQUENTIAL DAMAGES. MORE SPECIFIC WARRANTIES MAY ACCOMPANY INDIVIDUAL PRODUCTS.



Better care starts with safety and comfort.

621 Macon Street  
McDonough, GA 30253  
800-245-4636  
[www.encompassgroup.net](http://www.encompassgroup.net)