



Fitting for a Group

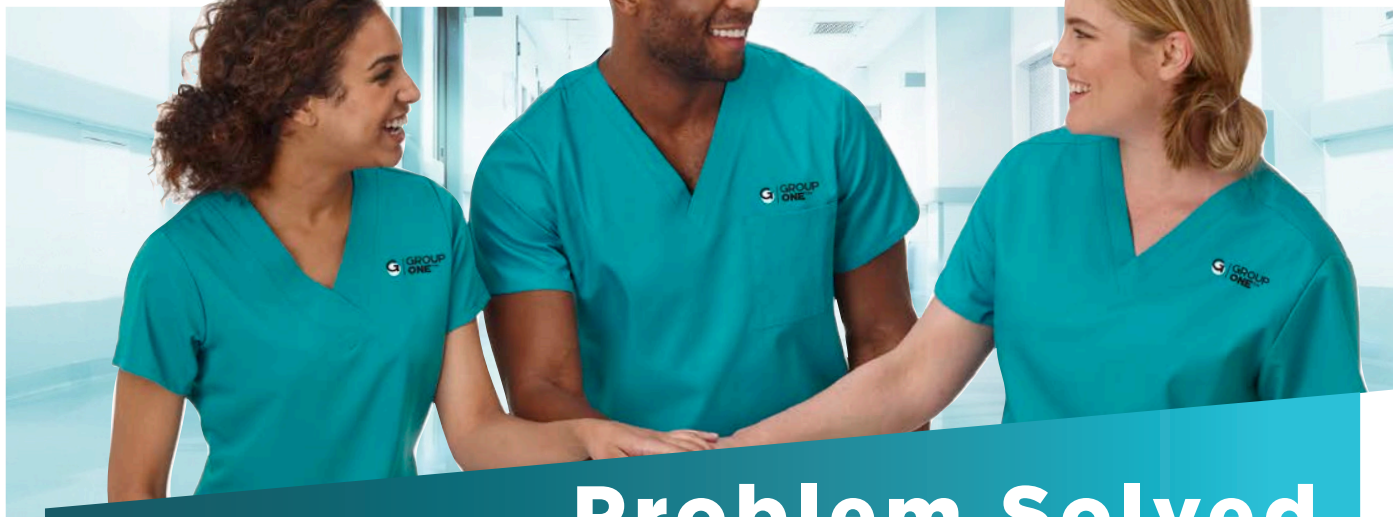
Safe and Comfortable in a Group

Group
Customization



PROFESSIONAL HEALTHCARE APPAREL PROGRAMS

Does Your Staff Have An Identity Problem



Problem Solved.

PARTNERING WITH ENCOMPASS GROUP BRINGS YOU OUR EXPERTISE AND BELIEF THAT **BETTER CARE STARTS WITH SAFETY AND COMFORT.**



BRANDING: Create and Maintain Professional Image
SECURITY: Easily Identify Your Staff vs. Unwanted Visitors
PATIENT EXPERIENCE: Help to Improve HCAHPS Scores
EMPLOYEE SATISFACTION: Quality, Style, and Comfort
EASE OF ORDERING: Online Solutions

GROUP ONE® is code for SUCCESS.

Find out how you can get started with your uniform program today!

Find your Encompass representative - Email GroupOne@EncompassGroup.net or visit us online at www.encompassgroup.com



© 2021 Encompass Group, LLC All Rights Reserved. GROUP ONE is a registered trademark of Encompass Group.

Table of Contents

24

NURSES HEROES

Lindsey Nelson

Meet Lindsey Nelson, RN who has been a nurse for three years. Lindsey is early in her nursing career, and we are grateful that she chose nursing, as she will clearly have an impact on many lives for years to come.

JOCKEY
SCRUBS

We mean it when we say Jockey® Scrubs are “The Most Comfortable Scrubs You’ll Ever Wear®.” We are so confident that you will LOVE your Jockey Scrubs that they are backed by our 100% satisfaction comfort guarantee. That’s risk-free shopping – Guaranteed!

50

BUY SCRUBS GIVE SCRUBS

Deanna Leonard

By donating over 20,000 scrubs to rural hospitals across the United States, it is Jockey and Encompass’s small way of saying thank you.



fundamentals®

Fundamentals are affordable, durable & professionally styled to be the core of your wardrobe. Covering a range of colors and sizes, Fundamentals is our most-group friendly core line.

26

NURSES HEROES

Melissa Piosca

Melissa has been an RN for 8 years. Melissa is an RN in Buffalo, New York. She gives her all every day to every one she comes in contact with. Her compassion, caring, and dedication came through loud and clear during our conversation.

META
LABWEAR

With over 120 years of experience, Meta® is the trusted leader in labcoats. Meta® has a labcoat for your entire career, from student to tenured professional.
Meta for life!

JOCKEY SCRUBS

THE MOST COMFORTABLE
YOU'LL EVER WEAR

COMFORT GUARANTEE



Jockey® Scrubs continues to be the superior brand in the healthcare industry, and we guarantee their comfort. That's why we call them...

JOCKEY® SCRUBS

COMFORTABLE SCRUBS
YOU'LL EVER WEAR®.

COMFORT GUARANTEE

JOCKEY
SCRUBS

“THE MOST COMFORTABLE SCRUBS YOU’LL EVER WEAR®.”

The fabric is the best tri-blend stretch fabric in the industry, designed not to fade, shrink or pill. We are so confident that you will love your Jockey Scrubs that they are backed by the risk-free Jockey® Comfort Guarantee – if, for whatever reason, at any time you are not happy with your scrubs, you can receive a full refund or replacement.

JOCKEY® SCRUBS – GUARANTEED FOR YOUR TEAM!

The Favorite

V-NECK TOP

Unique v-neck styling offers a feminine touch. Two top loading pockets with a signature zippered pocket for added security. Side seam hem venting for easy all-day movement.

TRI-BLEND FABRIC:

72% polyester

21% rayon

7% spandex

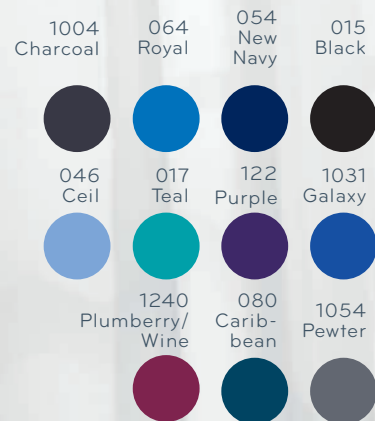
LENGTH: 27"

POCKETS: 3

SIZES: XXS-5X

STYLE # 2206

Colors



True Fit CROSSOVER V-NECK TOP

High crossover neckline creates an updated v-neckline. Front yoke ID badge loop keeps your ID secure. Unique four pocket design has two top loading on-seam pockets with two side entry signature zippered pockets. Side vents for ease of movement

TRI-BLEND FABRIC:

72% polyester

21% rayon

7% spandex

LENGTH: 26"

POCKETS: 4

SIZES: XS-3X

STYLE # 2299

Colors

046
Ceil

064
Royal

1004
Char-
coal

122
Purple



015
Black

054
New
Navy

1240
Plumberry/
Wine



Curves Ahead

MOCK WRAP TOP

Clean-finished mock wrap neckline with princess seaming for a universally flattering fit. Forward shoulder seam ID badge loop keeps your ID secure. Unique top loading pockets with two additional signature zippered pockets on top and one hidden media pocket. Side seam hem venting for easy all-day movement.

TRI-BLEND FABRIC:

72% polyester

21% rayon

7% spandex

LENGTH: 26"

POCKETS: 5 (1 hidden)

SIZES: XS-3X

STYLE # 2306

Colors

064
Royal

046
Ceil

017
Teal

1054
Pewter



015
Black

054
New
Navy

122
Purple



Comfort CREW TOP

Clean finished round neckline and raglan style sleeve that gives you a professional look with the comfort of your favorite tee. Store all your gear with two angled top loading pockets with additional media and pen slots inside and secure badge loop. Side hem venting for all-day comfort..

TRI-BLEND Fabric: 72% polyester 21% rayon 7% spandex

LENGTH: 25" **POCKETS:** 3 - PLUS 4 PEN SLOTS

SIZES: XS-2X **STYLE #** 2479

015
Black

054
New
Navy

064
Royal

1004
Charcoal





The Favorite FIT PANT

Half elastic back and half drawstring front for maximum comfort. Two front angled pockets plus cargo with signature zippered pocket offer incredible security and storage. Side vents for ease of movement. 19" leg opening with a slight flare. 31 ½" inseam.

TRI-BLEND Fabric:

72% polyester

21% rayon

7% spandex

INSEAM: 31.5 REG, 33.5 TALL, 29.5 PETITE

SIZES: XXS-5X, XSP-2XP, XST-XLT

POCKETS: 4

STYLE # 2249

Colors



Extreme COMFY PANT

Relaxed fit and slightly flared leg to ensure the ultimate comfort. Full elastic waist design with drawstring closure. Multi-pockets all in front for all-day functionality and lots of storage options. Vented leg openings for ease of movement. 18" leg opening with 31" inseam.

TRI-BLEND FABRIC:

72% polyester

21% rayon

7% spandex

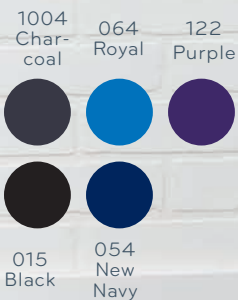
INSEAM: 31.5 REG, 33.5 TALL, 29.5 PETITE

SIZES: XS-5X, XSP-2XP, ST-XLT

POCKETS: 4

STYLE # 2377

Colors



Soft Comfort YOGA PANT

Contoured yoga waistband gently hugs and flatters. Secure side leg welt pocket creates an uncomplicated look. 19" leg opening with a straight leg 31" inseam.

TRI-BLEND Fabric:

72% polyester

21% rayon

7% spandex

POCKETS: 1

SIZES: XS-XL

STYLE # 2358

Colors

015
Black

054
New
Navy

064
Royal

1004
Charcoal



The Ultimate **MATERNITY PANT**

Pure comfort front and back stretch panel. Two front and two back hip pockets. Mock fly detail. Side vents for ease of movement. 16" leg opening with 31 ½" inseam.

TRI-BLEND Fabric:

72% polyester

21% rayon

7% spandex

SIZES: XS-3X

POCKETS: 4

STYLE # 2459

Colors

015
Black

054
New
Navy

1004
Charcoal



Pure Comfort
Front and Back!



Empire Waist MATERNITY TOP



Keyhole neckline detail offers a feminine touch. Empire waist with adjustable back ties gives a customizable fit. Two front patch pockets to hold your gear.

TRI-BLEND Fabric: 72% polyester 21% rayon 7% spandex

LENGTH: 26 ½" **POCKETS:** 2

SIZES: XS-3X **STYLE #** 2461

015
Black

054
New
Navy

1004
Charcoal



Snap To It

WARM-UP JACKET

Round neckline with color matching cap snap closure. Front and back princess seams with two top loading, roomy pockets and hidden media pocket. Soft stretch color matched knit cuffs.

TRI-BLEND FABRIC:

72% polyester, 21% rayon, 7% spandex

LENGTH: 28"

POCKETS: 3

SIZES: XS-3X

STYLE # 2356

Colors



Zip and Go

UNISEX JACKET

Stand up collar with clean finished zipper front closure to give you style and function. Invisible zippered chest pocket and two side entry pockets made to hold everything you need. Mesh trimmed side panel keeps you cool on the go.

TRI-BLEND FABRIC:

72% polyester

21% rayon

7% spandex

LENGTH: 26 ½"

POCKETS: 3

SIZES: XS-3X

STYLE # 2477

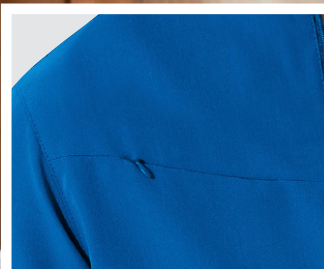
Colors

015
Black

054
New
Navy

064
Royal

1004
Charcoal





THE MOST COMFORTABLE SCRUBS
YOU'LL EVER WEAR®.

COMFORT GUARANTEE



Four Pocket UNISEX TOP

Banded v-neck design for a classic, professional look. Forward dropped shoulder with badge loop for maximum comfort. Four pockets for all your gear. Side vents allow for easy mobility.

TRI-BLEND FABRIC:

72% polyester,
21% rayon,
7% spandex

LENGTH: 28"

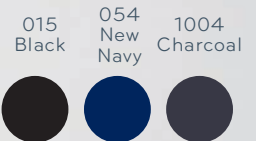
POCKETS: 4

SIZES: XS-3X

STYLE # 2371



Colors



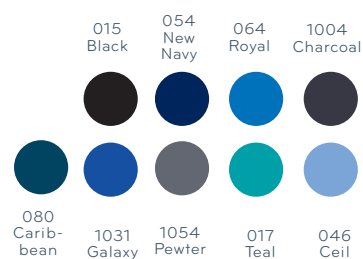
One Pocket UNISEX TOP

Banded v-neck design for a classic, professional look. Classic front and back shoulder yoke detailing. Topstitching details provide extra strength and style. Chest pocket stores personal items. Side vents allow for easy mobility.

TRI-BLEND FABRIC:

72% polyester 21% rayon 7% spandex

LENGTH: 28" POCKETS: 1 SIZES: XS-4X STYLE # 2200



Men's Everything PANT

Adjustable waistband with full elastic and inside drawstring for maximum comfort. Fully functional zipper fly, five belt loops and two front side slash pockets. Right cargo pocket features inside phone pocket, and left divided cargo pocket for pens and instruments. Two secure, back-zipped welt pockets with inside bags hold wallet and phone on the inside. 19" leg opening, straight leg inseam 31".

TRI-BLEND FABRIC:

72% polyester

21% rayon

7% spandex

POCKETS: 7

INSEAM: 31 REG, 33 TALL, SHORT 28

SIZES: XS-4X; SSH-LSH; ST-XLT

STYLE # 2305

Colors

015 Black 054 New Navy 064 Royal 1004 Charcoal



080 Carib-bean 1031 Galaxy 1054 Pewter 017 Teal 046 Ceil



The Best **UNISEX PANT**

The most comfortable unisex pant in the industry. Full drawstring tie-waist has back elastic for maximum adjustability and comfort. Slimmer silhouette flatters both men and women. Deep cargo pocket on thigh is ideal for storage. Back hip pocket with self-adhesive hook and loop closure keeps valuables secure. 19" leg opening with 31" inseam.

TRI-BLEND FABRIC:

72% polyester

21% rayon

7% spandex

INSEAM: 31 REG

SIZES: XS-3X

POCKETS: 2

STYLE # 2338

Colors

015
Black

054
New
Navy

1004
Charcoal



All colors and styles are in stock
and reorderable.

We are so confident that you will LOVE your
Jockey Scrubs that they are backed by our
100% satisfaction comfort guarantee.
That's risk-free shopping - Guaranteed!







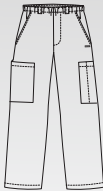
TRI-BLEND FABRIC:
72% polyester, 21% rayon, 7% spandex
Product is imported.

 <p>2206 LADIES V-NECK TOP XXS - 5X</p>	 <p>2306 LADIES MOCK WRAP TOP XS - 3X</p>	 <p>2299 LADIES CROSSOVER TOP XS - 3X</p>	 <p>2479 NEW LADIES V-NECK TOP XS - 2X</p>	 <p>2356 LADIES SNAP FRONT JACKET XS - 3X</p>	 <p>2249 LADIES 1/2 ELASTIC, 1/2 DRAWSTRING CARGO PANT INSEAM 31.5 R, 33.5 T, 29.5 P XXS-5X, XSP-2XP, XST-XLT</p>	 <p>2377 LADIES FULL ELASTIC WITH DRAWSTRING PANT INSEAM 31.5 R, 33.5 T, 29.5 P XS - 5X XSP-2XP, ST-XLT</p>	 <p>2358 LADIES YOGA PANT INSEAM 31 XS-XL</p>
015 BLACK	015 BLACK	015 BLACK	015 BLACK	015 BLACK	015 BLACK	015 BLACK	015 BLACK
054 NEW NAVY	054 NEW NAVY	054 NEW NAVY	054 NEW NAVY	054 NEW NAVY	054 NEW NAVY	054 NEW NAVY	054 NEW NAVY
064 ROYAL	064 ROYAL	064 ROYAL	064 ROYAL	064 ROYAL	064 ROYAL	064 ROYAL	064 ROYAL
1004 CHARCOAL		1004 CHARCOAL	1004 CHARCOAL	1004 CHARCOAL	1004 CHARCOAL	1004 CHARCOAL	1004 CHARCOAL
1031 GALAXY				1031 GALAXY	1031 GALAXY		
017 TEAL	017 TEAL			017 TEAL	017 TEAL		
046 CEIL	046 CEIL	046 CEIL		046 CEIL	046 CEIL		
1054 PEWTER	1054 PEWTER			1054 PEWTER	1054 PEWTER		
080 CARIBBEAN				080 CARIBBEAN	080 CARIBBEAN		
1240 PLUMBERRY/WINE		1240 PLUMBERRY/WINE		1240 PLUMBERRY/WINE	1240 PLUMBERRY/WINE		
122 PURPLE	122 PURPLE	122 PURPLE		122 PURPLE	122 PURPLE	122 PURPLE	

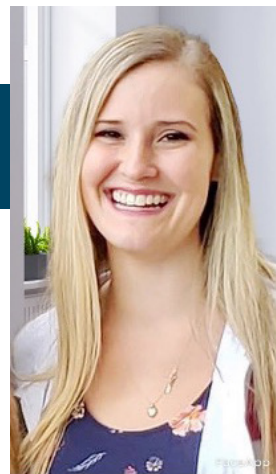
JOCKEY®

SCRUBS

THE MOST COMFORTABLE SCRUBS
YOU'LL EVER WEAR®.

						
2461 MATERNITY TOP XS -3X	2459 MATERNITY PANT INSEAM 31.5 REG XS -3X	2200 UNISEX 1-POCKET TOP XS -4X	2338 UNISEX PANT INSEAM 31 REG XS -3X	2371 UNISEX 4-POCKET TOP XS -3X	2477 UNISEX JACKET XS -3X	2305 MENS FULL ELASTIC/FULL DRAWSTRING PANT INSEAM 31 REG, 33 TALL, 28 SHORT XS-4X, SSH-LSH, ST-XLT
015 BLACK	015 BLACK	015 BLACK	015 BLACK	015 BLACK	015 BLACK	015 BLACK
054 NEW NAVY	054 NEW NAVY	054 NEW NAVY	054 NEW NAVY	054 NEW NAVY	054 NEW NAVY	054 NEW NAVY
		064 ROYAL			064 ROYAL	064 ROYAL
1004 CHARCOAL	1004 CHARCOAL	1004 CHARCOAL	1004 CHARCOAL	1004 CHARCOAL	1004 CHARCOAL	1004 CHARCOAL
		1031 GALAXY				1031 GALAXY
		017 TEAL				017 TEAL
		046 CEIL				046 CEIL
		1054 PEWTER				1054 PEWTER
		080 CARIBBEAN				080 CARIBBEAN

Products described in this catalog are made from imported fabrics.



Lindsey Nelson
RN

Nurse Heroes

INTERVIEW

Never have we needed nurses and healthcare heroes more than we do today. And never have we so appreciated all they do on a daily basis and all they've been through over the past year. Their lives and their families' lives have been turned upside down and inside out. Encompass Group wanted to take a moment and highlight a couple of these nurse heroes who are making a powerful difference every day. We had the honor of asking them a few questions. Meet Lindsey Nelson, RN who has been a nurse for three years.

Question 1: What motivated you to become a nurse?

Answer 1: I have always known that I was meant to be a nurse. I love helping others to feel better and educating them on how to better care for themselves. I wanted to be able to make a difference in someone's life and I get the chance to do that every day.

Question 2: What is the best part of being a nurse?

Answer 2: The best part of being a nurse is helping others. I get to meet all kinds of people in

different stages of their lives. I get to help each patient in a different way.

Question 3: What is the most challenging part of being a nurse?

Answer 3: The most challenging part of being a nurse is trying to help those who don't want to help themselves. I can do everything possible for a patient but if they don't have the motivation to do what it takes to get better, they won't get better

Question 4: How do you stay motivated and positive?

Answer 4: I stay motivated and positive by reminding myself that every day is a new day and a new opportunity to help someone.

Question 5: What can we do to be supportive of you and all healthcare workers during this pandemic?

Answer 5: To support healthcare workers during this pandemic everyone can follow the CDC guidelines and local hospital rules. Nurses don't make the rules of the hospital and if the hospital is limiting visitors, don't give the staff a hard time.

Question 6: If there was one wish you could grant, what would it be?

Answer 6: If I could grant one wish, it would be that this pandemic would end and everyone would be able to spend time with their loved ones again

Question 7: Is there anything you'd like to share about your experience being a nurse?

Answer 7: Being a nurse is the best yet most challenging career. I have great days where I know I was able to make a difference in someone's life and then there are days where a family member of my patient yelled and caused a scene and had to be removed. Be patient with us nurses. We are doing everything we can to help you and all of our other patients. We are normally harder on ourselves than anyone else.

Lindsey is early in her nursing career and we are grateful that she chose nursing, as she will clearly have an impact on many lives for years to come.

Thank you Lindsey – you truly are a nurse hero.

JOCKEY® SCRUBS MEASURE UP!

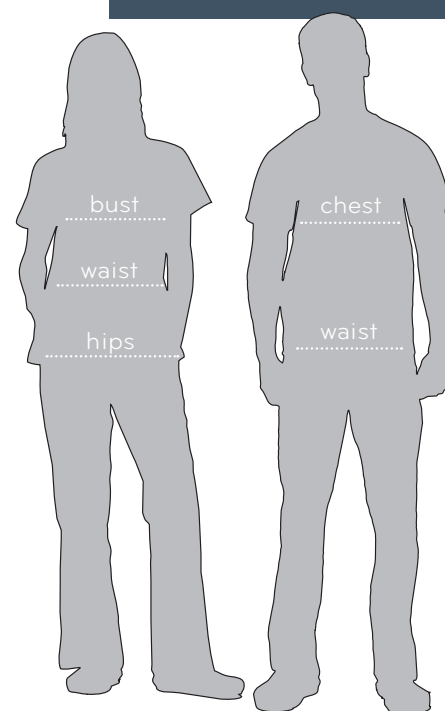
Fit tested and expertly crafted. So you look and feel your best all day long.

MEASURING BASICS

Bust & Chest: Place measuring tape under armpits and extend the tape around the broadest section of your chest.

Waist: Place tape around your natural waistline.

Hips: Stand with feet 2-4 inches apart and measure around the fullest part of your hips.



INSEAM CHART

	Standard	Petite	Unisex	Men's	Standard	Unisex-Tall	Tall
Inseam Length	31½"	29½"	31"	31"	31½"	33"	33½"

CLASSIC WOMEN'S SIZE CHART

	XXS	XS	S	M	L	XL	2X	3X	4X	5X
Size	0	2-4	6-8	10-12	14-16	18-20	20W-22W	24W-26W	28W-30W	32W-34W
Bust	30-31	32-33	34-36	37-39	40-42	43-46	47-50	51-54	55-58	59-62
Waist	22-23	24-25	26-27	28-30	31-33	34-37	38-41	42-45	46-49	50-53
Hips	32-33	34-35	36-38	39-41	42-44	45-48	49-52	53-56	57-60	61-64

MODERN WOMEN'S SIZE CHART

	XXS	XS	S	M	L	XL	2X	3X
Size	0	2-4	6-8	10-12	14-16	18-20	20W-22W	24W-26W
Bust	30	32	34	37	41	44	48	52
Waist	22	24	26	29	32	36	40	44
Hips	32	34	36	39	43	47	51	54

MEN'S SIZE CHART

	XS	S	M	L	XL	2X	3X	4X
Men's size (chest)	30-32	34-36	38-40	42-44	46-48	50-52	54-56	58-60
Men's waist	24-26	28-30	32-34	36-38	40-42	44-46	48-50	52-54

UNISEX SIZE CHART

	XS	S	M	L	XL	2X	3X	4X
Men's size (chest)	30-32	34-36	38-40	42-44	46-48	50-52	54-56	58-60
Men's waist	24-26	28-30	32-34	36-38	40-42	44-46	48-50	52-54
Women's size	2-4	6-8	10-12	14-16	18-20	20W-22W	24W-26W	28W-30W

Nurse Heroes

INTERVIEW

In the second part of our on-going highlight of nurse heroes, we had the honor of speaking with Melissa Piosca. Melissa has been an RN for 8 years and as it turns out, healthcare as a profession runs in her family. As she put it, “she comes by it naturally”.

Meet Melissa Piosca.

Question 1: What motivated you to become a nurse?

Answer 1: I always believed that nurses were intelligent, passionate and hardworking. I have 4 aunts who are nurses, each who inspired me to enter this profession.

Question 2: What is the best part of being a nurse?

Answer 2: The best part of being a nurse is what a privilege it is in gaining people’s trust. I see them and care for them in all types of situation, some happy, some sad, some exciting, some tragic. I always give them my best in the care I provide, especially during a pandemic.

Question 3: What is the most challenging part of being a nurse?

Answer 3: The most challenging part of being a nurse has definitely showed up during this pandemic. Having resilience has never been more critical. Everything has changed – from hours, to responsibilities, to how we handle uniforms, to daily routines. The emotional attachment I have with my patients is deep and it’s difficult to say good-byes; it weighs heavy on my heart. Sometimes I feel powerless, even though I know we are providing the very best care.

Question 4: How do you stay motivated and positive?

Answer 4: My family is my core source of motivation. My husband Duane and my young daughter Brielle make it all worthwhile. I feel blessed to be in good health and to have my family close.

Question 5: What can we do to be supportive of you and all healthcare workers during this pandemic?

Answer 5: To support healthcare workers during this pandemic, please do not underestimate the power of prayer. Also, promoting



Melissa Piosca
RN, BUFFALO, NEW YORK

prevention and following CDC guidelines.

Question 6: If there was one wish you could grant, what would it be?

Answer 6: My wish would be that we could finally eradicate COVID19 – put an end to the pandemic. So many lives have been affected.

Question 7: Is there anything you’d like to share about your experience being a nurse?

Answer 7: The other challenge of the pandemic is the random feeling of guilt – guilty for time spent at work when I’m not spending more time with my family, and guilty for time at home when I’m not spending time caring for my patients. It’s an unending cycle.

Melissa is an RN in Buffalo, New York. She gives her all every day to every one she comes in contact with. Her compassion, caring, and dedication came through loud and clear during our conversation.

Thank you Melissa – you truly are a nurse hero.

How an Apparel Program Contributes to Higher Patient Satisfaction

CUSTOMER-CENTRIC CULTURE



"Patient first" is certainly not a new idea—we all know the importance of understanding the patient/customer experience and providing a better care experience. But how would standardizing healthcare personnel attire support a customer-centric culture?

Put yourself in a patient's shoes for a moment—especially an elderly patient, or perhaps a parent with a sick child. You're sick, upset to be in the hospital, and people are coming and going through your room and you don't know why.

On patient satisfaction surveys patients often comment on caregivers' lack of professional appearance, and their inability to identify who was in their room. This is obviously upsetting for patients and can affect who they trust to provide their care. A lack of a provider dress code not only contributes to patients' inability to identify who is in their room, but also why that provider is in their room.

IDENTIFICATION & PROFESSIONALISM

Most hospitals and health systems that adopt a dress code elect to color code attire by job role—for example, all registered nurses may wear dark blue, nurse practitioners may wear light blue, and nursing assistants may wear green. This allows patients to easily differentiate who is who merely by scrub color, without the caregiver having to introduce themselves. Additionally, a dress code can give an increased sense of professionalism in staff appearance and feelings of pride and greater comradery among teammates.

What seems like a simple change on paper—standardizing attire—may be more difficult to undertake than you think. Will the change only affect nursing staff, or all providers of care? How much will it cost to provide the attire for employees? Will you allow color and style variation in your hospitals? Will the attire be branded? What are the regulations required by law? All aspects of this change should be explored before your health system decides whether to move forward or not.



PROVIDER RESPONSE

Perhaps you or your fellow nursing staff are not overly thrilled with the idea of an apparel program. For one, you may have already invested in your own work wardrobe. Many of you likely enjoy the opportunity to select your own colors and patterns or characters every day, especially those that work with pediatric patients.

Questions abound—will nurses have to stick with one color from here on out? Who is paying for this new wardrobe? These types of questions, concerns, and suggestions must be addressed by the decisionmakers. Employee engagement throughout the entire process is vitally important.

There's no doubt that a carefully considered and researched Professional Attire Policy has great benefits for both patients and caregivers. While such a mammoth culture change may seem intimidating, an apparel program can help create trust between care providers and patients in order to create a (more!) excellent service culture.





fundamentals[®]

The Core of Your Healthcare Wardrobe.

The Fundamentals[®] collection is our most group-friendly collection. Get a professional look that has functional details on a budget. The Fundamentals collection is affordable fashion that is the core to your healthcare wardrobe.



I4700

LADIES 2-POCKET TOP



015 BLACK



011 WHITE



034 HUNTER



1004 CHARCOAL



017 TEAL



014 NAVY



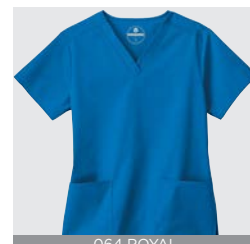
1031 GALAXY



054 NEW NAVY



046 CEIL



064 ROYAL

Features:

28" Length / Set-In Sleeves / **2 Roomy Patch Pockets** / Side Slits

65% Polyester **35%** Cotton Poplin with Soil Release

Sizes: XXS-4X



I4740

LADIES WARM-UP JACKET



015 BLACK



011 WHITE



034 HUNTER



1004 CHARCOAL



014 NAVY



017 TEAL



054 NEW NAVY



046 CEIL

Features:

28" Length / Set-In Sleeves / Front and Back Princess Seams /
Snap Front Closure / Color Matching Knit Cuffs / **2 Deep Patch Pockets**

65% Polyester / 35% Cotton Poplin with Soil Release

Sizes: XS-4X



I4720

LADIES CARGO PANT



Inseam: 31.5" / **Petite:** 29.5" / **Tall:** 33.5"

Features:

18" Straight Leg Opening / Covered Full Elastic Waist Pant **2 Cargo Pockets** / Side Vents

65% Polyester / **35%** Cotton Poplin with Soil Release

Sizes: XXS-4X, XSP-2XP, ST-XLT



I4900

UNISEX ONE-POCKET TOP



015 BLACK



011 WHITE



034 HUNTER



1004 CHARCOAL



064 ROYAL



014 NAVY



017 TEAL



054 NEW NAVY



046 CEIL



1031 GALAXY



Features:

29" Length / Set-In Sleeves / **1 Chest Pocket with Pen Divider**

65% Polyester / 35% Cotton

Poplin with Soil Release

Sizes: XS-5X



I4920

UNISEX DRAWSTRING PANT



015 BLACK



011 WHITE



034 HUNTER



1004 CHARCOAL



046 CEIL



014 NAVY



017 TEAL



054 NEW NAVY



1031 GALAXY



064 ROYAL

Inseam 31" Short: 28" / Tall: 33"

Features:

18" Leg Opening / Full Drawstring Waist **2 Pockets** — 1 Cargo Pocket and 1 Back Hip Pocket

65% Polyester / **35%** Cotton Poplin with Soil Release

Sizes: XS-5X, XSSH-XLSH, XST-2XT



14843

UNISEX FIVE-POCKET PANT



Inseam: 30½" **Short:** 28½" **Tall:** 32½" **Features:**
18" Leg Opening / Drawstring with Elastic Waist / Zipper Fly Detail
5 Pockets –2 Cargo Pockets, 2 Front Hip Pockets and 1 Back Hip Pocket
65% Polyester / 35% Cotton Poplin with Soil Release
Sizes: XS-4X, SSH-XLSH, ST-XLT

Fundamentals are affordable, durable & professionally styled to be the core of your wardrobe. Covering a range of colors and sizes, Fundamentals is our most-group friendly core line.



14700
LADIES
28" 2-POCKET TOP
XXS - 4X



14720
LADIES
CARGO PANT
INSEAM: 31.5 REG, 33.5 TALL, PETITE 29.5
XXS-4X, XSP-2XP, ST-XLT



14740
LADIES
28" WARM-UP JACKET
XS - 4X

011 White

014 Navy

015 Black

1004 Charcoal

034 Hunter

046 Cell

017 Teal

054 New Navy

064 Royal

1031 Galaxy Blue

014 Navy

015 Black

1004 Charcoal

034 Hunter

046 Cell

017 Teal

054 New Navy

064 Royal

1031 Galaxy Blue

011 White

014 Navy

015 Black

1004 Charcoal

034 Hunter

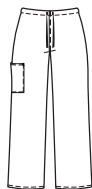
046 Cell

017 Teal

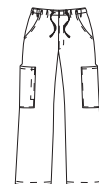
054 New Navy



14900
UNISEX
29" 1-POCKET TOP
XS-5X



14920
UNISEX
DRAWSTRING PANT
INSEAM: 31 REG, 28 SHORT, 33 TALL
XS-5X, XSSH-XLSH, XST-2XT



14843
UNISEX
5-POCKET PANT
INSEAM: 30.5 REG, 28.5 SHORT, 33.5 TALL
XS-4X, SSH-XLSH, ST-XLT

011 White

014 Navy

015 Black

1004 Charcoal

034 Hunter

046 Cell

017 Teal

054 New Navy

064 Royal

1031 Galaxy Blue

011 White

014 Navy

015 Black

1004 Charcoal

034 Hunter

046 Cell

017 Teal

054 New Navy

064 Royal

1031 Galaxy Blue

014 Navy

015 Black

1004 Charcoal

034 Hunter

046 Cell

All colors & styles in stock and re-orderable • Product is imported
Fabric: 65/35 Poly-Cotton Poplin
with Soil Release

SIZE & FIT



WOMEN'S SIZE CHART

WOMEN'S	XXS	XS	S	M	L	XL	2X	3X	4X
SIZE	0-2	4-6	8-10	12-14	16-18	20-20W	22W-24W	26W-28W	30W-32W
BUST	31-32	33-34	35-36	37 ½-39	40 ½-42 ½	44 ½-46 ½	48 ½-50 ½	52 ½-54 ½	56 ½-58 ½
WAIST	22-23	24-25	26-27	28 ½-30	31 ½-33 ½	35 ½-37 ½	39 ½-41 ½	43 ½-45 ½	47 ½-49 ½
HIPS	32 ½-33 ½	34 ½-35 ½	36 ½-37 ½	39-40 ½	42-44	46-48	50-52	54-56	58-60

MEN'S SIZE CHART

MENS	XS	S	M	L	XL	2X	3X	4X	5X
Size	30 - 32	34 - 36	38 - 40	42 - 44	46 - 48	50 - 52	54 - 56	58 - 60	62 - 64
Chest	30 - 32	34 - 36	38 - 40	42 - 44	46 - 48	50 - 52	54 - 56	58 - 60	62 - 64
Waist	24 - 26	28 - 30	32 - 34	36 - 38	40 - 42	44 - 46	48 - 50	52 - 54	56 - 58

UNISEX SIZE CHART

Size	XS	S	M	L	XL	2X	3X	4X	5X
Men's	30 - 32	34 - 36	38 - 40	42 - 44	46 - 48	50 - 52	54 - 56	58 - 60	62 - 64
Women's	4 - 6	8 - 10	12 - 14	16 - 18	20W	22W - 24W	26W - 28W	30W - 32W	34W - 36W

Products described in this catalog are made from imported fabrics.



EMBROIDERY

Smile Toothpaste



EMB-1449

Autism



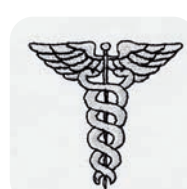
EMB-1451

Heart Stethoscope



EMB-1450

Caduceus



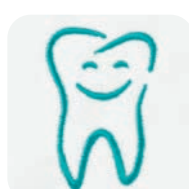
EMB-1448

Heart Paw



Black - EMB-1434
Red - EMB-1435*
White - EMB-1436
Pro-Purple - EMB-1437

Happy Tooth



Black - EMB-1442
Royal - EMB-1443
White - EMB-1444
Aquamarine - EMB-1445*

Dog & Cat



Black - EMB-1438*
Royal - EMB-1439
White - EMB-1440
Aquamarine - EMB-1441

Hope Ribbon



Begonia - EMB-1446*
Ruby Glint - EMB-1447

We Do Custom Embroidery

CREATE A UNIQUE IDENTITY

We offer the latest technology in embroidery design and application. Create a unique identity by adding name or job title to your customer's new uniform. Orders must be in writing and color of embroidery specified. Embroidery can be up to 4 lines.

Custom logos can be embroidered – please ask your customer service representative for a special price quote. Artwork submitted with color requirements takes two days for a price quote plus 2-3 weeks for a sample for your approval. Please allow an additional two weeks for delivery of finished garments.

THREAD COLORS



More thread options available upon request

*Represents color shown

TEXT STYLE




STANDARD EMBROIDERY CHART

Print Style	SIZES
Block	3/8" / 1/2" / 3/4"
Script	3/8" / 1/2" / 3/4"
Brush Script	3/8" / 1/2" / 3/4"



META *FOR* LIFE

A grey EKG line graphic that starts with a horizontal line, then has two sharp peaks of increasing height, and finally levels out into a horizontal line.

The Meta® labcoat brand name has been a trusted leader since 1896 and continues to bring a perfect blend of style, function, fit and comfort. A variety of performance fabrics are used to provide the features and details that your team is looking for. With the widest array of styles and sizes in the industry, Meta has been the go-to labcoat of choice for professionals throughout their careers. Find out what makes Meta right for your team.



META® LABWEAR

META FOR LIFE

1963 MEN'S 38" COAT



Length	38" Long Coat
Sizes	32-60, 38L-56L
Fabric	65/35 Fine Line Twill 5.5 oz. sq/yd
6 Pockets	<ul style="list-style-type: none">• 2 Lower Patch Pockets• 1 Breast Pocket• 2 Inside Pockets• 1 Oversized to Hold iPad®• Hand Access Slits• Pen Divider on Chest Pocket• Pleated Back with Sewn Down Belt



META® LABWEAR

META FOR LIFE



Length

37" Long Coat

Sizes

0-20, 40-48,
8T-20T

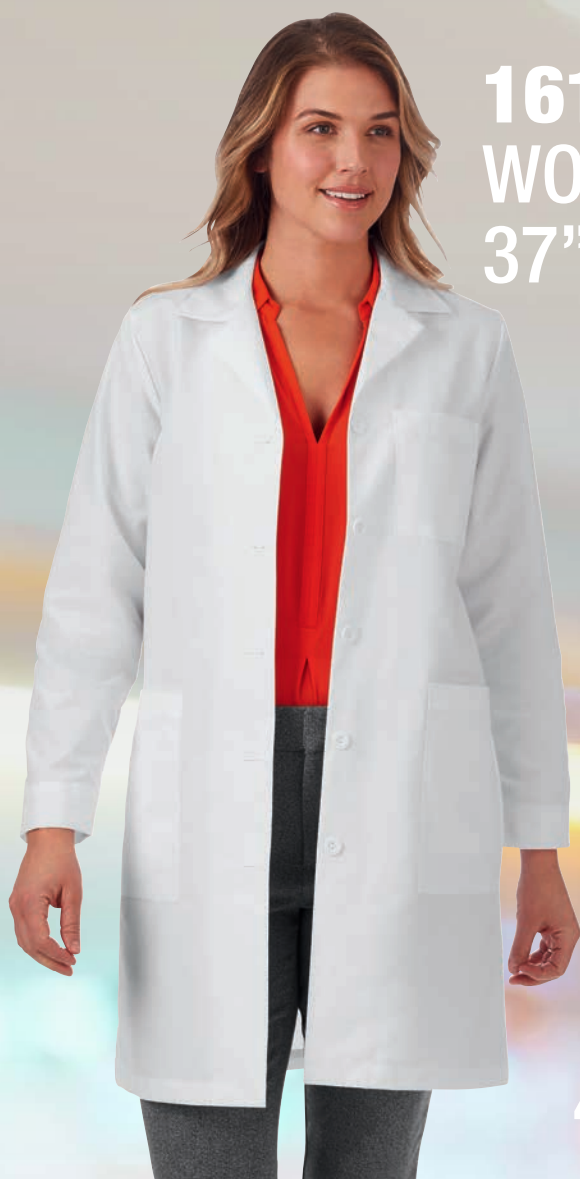
Fabric

80/20 Super Blend Twill
5.0 oz. sq/yd

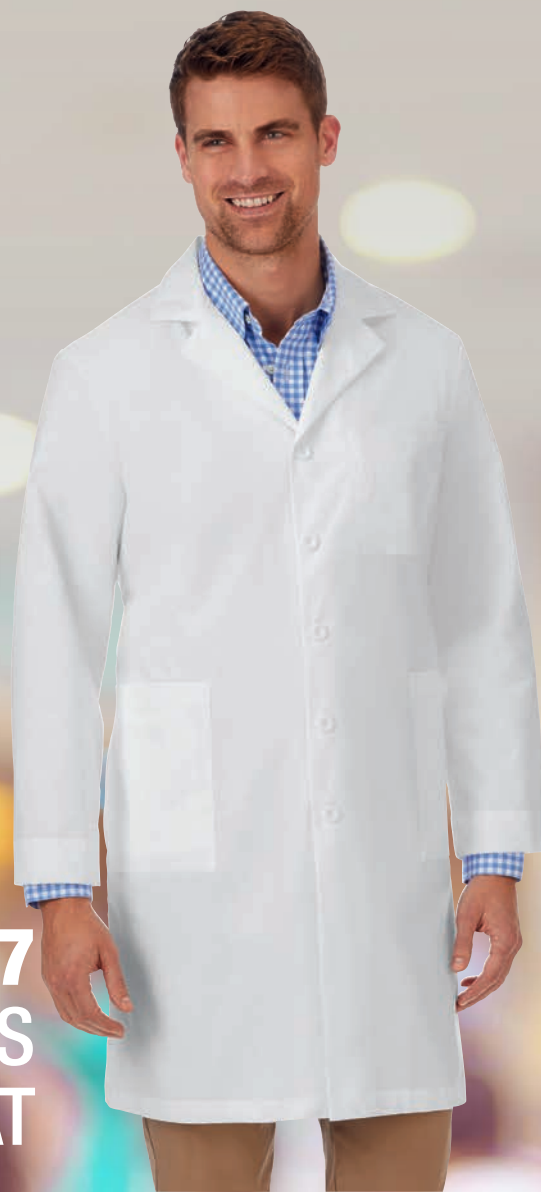
6 Pockets

- 2 Lower Patch Pockets
- 1 Breast Pocket
- 2 Inside Pockets
- 1 Oversized to Hold iPad®
- Hand Access Slits
- Pen Holder in Breast Pocket
- Edge Stitched Front Sewn Down Back Belt with Accent Darts Above and Pleats Below

1964 WOMEN'S 37" COAT



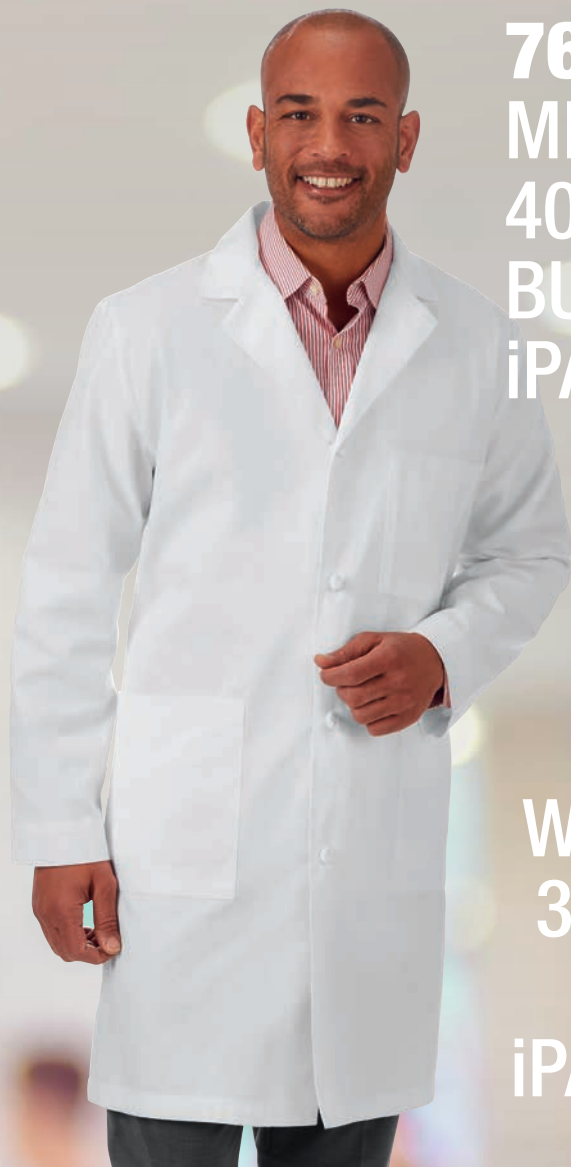
161 WOMEN'S 37" COAT



267 MEN'S 40" COAT

Length	37" Long Coat
Sizes	0-20
Fabric	65/35 Performance Poplin 5.2 oz. sq/yd
5 Pockets	<ul style="list-style-type: none">• 2 Inside Pockets• Princess Back with Belt• Hands Access Slits• Scissors Holder

Length	40" Long Coat
Sizes	34-48
Fabric	65/35 Performance Poplin 5.2 oz. sq/yd
5 Pockets	<ul style="list-style-type: none">• 2 Inside Pockets• Fully Finished Hand Access Slits• Scissors Holder• 2-Piece Swing Belt• Pen Divider on Chest Pocket



762 MEN'S 40" KNOT BUTTON iPAD COAT



763 WOMEN'S 38" KNOT BUTTON iPAD COAT

Length	40" Long Coat
Sizes	32-48
Fabric	100% Easy Care Cotton Twill 6.7 oz. sq/yd
5 Pockets	<ul style="list-style-type: none">• 2 Lower Patch Pockets• 1 Breast Pocket with Pen Stitch• 1 Inside Cell Pocket• 1 Inside iPad® Pocket• Hand Access Slits• Sewn Down Back Belt with Accent Darts

Length	38" Long Coat
Sizes	0-20
Fabric	100% Easy Care Cotton Twill 6.7 oz. sq/yd
5 Pockets	<ul style="list-style-type: none">• 2 Lower Patch Pockets• 1 Breast Pocket with Pen Stitch• 1 Inside Cell Pocket• 1 Inside iPad® Pocket• Hand Access Slits• Sewn Down Back Belt with Accent Darts



738 WOMEN'S 28" COAT



Length	28" Consult Coat
Sizes	0-20, 40-48, 8T-20T
Fabric	65/35 Fine Line Twill 5.5 oz. sq/yd
7 Pockets	<ul style="list-style-type: none">• 2 Lower Outside iPad® Pockets• 1 Hidden Cell Pocket• 1 Breast Pocket• 3 Inside Pockets• Front Darts• 3 Button Closure





META® LABWEAR

META FOR LIFE



Length	30" Consult Coat
Sizes	34-56, 38L-56L
Fabric	65/35 Fine Line Twill 5.5 oz. sq/yd
7 Pockets	<ul style="list-style-type: none">• 2 Lower Outside iPad® Pockets• 1 Hidden Cell Pocket• 1 Breast Pocket• 3 Inside Pockets• Front Darts• 3 Button Closure

739
MEN'S
30" COAT



15000 WOMEN'S 33" COAT



15007 MEN'S 34" COAT



Length	33" Mid-Length Coat
Sizes	XXS-3X
Fabric	65/35 Poplin with Soil Release 5.2 oz. sq/yd
3 Pockets	<ul style="list-style-type: none">• Pencil Pocket Stitch on Breast Pocket• 1-Piece Back• 3 Roomy Outside Pockets

Length	34" Mid-Length Coat
Sizes	S-3X
Fabric	65/35 Poplin with Soil Release 5.2 oz. sq/yd
3 Pockets	<ul style="list-style-type: none">• Pencil Pocket Stitch on Breast Pocket• 1-Piece Back• 3 Roomy Outside Pockets



15113 WOMEN'S 37" COAT



15112 MEN'S 40" COAT

Length	37" Long Coat
Sizes	XXS-4X
Fabric	65/35 Performance Poplin 5.2 oz. sq/yd
3 Pockets	<ul style="list-style-type: none">• Hand Access Slits• 1-Piece Back and Sleeve• 3 Roomy Outside Pockets

Length	40" Long Coat
Sizes	XS-5X
Fabric	65/35 Performance Poplin 5.2 oz. sq/yd
3 Pockets	<ul style="list-style-type: none">• Hand Access Slits• 1-Piece Back• 2-Piece Sleeve• 3 Roomy Outside Pockets

When the team at Jockey International and the team at Encompass Group, LLC get together to brainstorm on what else they can do to help make a difference during the pandemic, you never know what is going to happen. "With Jockey being founded by a minister 144 years ago, Jockey is a third-generation family owned company. Jockey believes they have been blessed by this country and in her time of need, they will help return the blessing." ¹

Encompass's mission statement is grounded in taking care of people. Encompass believes every patient, resident, caregiver and family member should feel Safe & Comfortable in today's healthcare environment. Everything Encompass creates is rooted in that mission and they are proud to design, produce and deliver Jockey® Scrubs. Together, Jockey and Encompass have made great strides to deliver key supplies to those in need including donating 250,000 isolation gowns and 10,000 scrubs.

Knowing that there is still a huge need out there, Jockey and Encompass partnered again, this time focusing on rural hospitals. Rural hospitals dedicate themselves to ensuring their local communities have the high quality healthcare everyone deserves. Quite often, these communities are made up of underserved populations. "Rural Americans are older and sicker with higher percentages of the six leading chronic diseases, making them more vulnerable to COVID-19. At the same time, rural health care providers are struggling to keep their doors open. Nearly half of all rural hospitals operate at a financial loss, and the rural hospital closure crisis has created healthcare deserts throughout rural America. Rural hospitals and health care providers are on the frontlines keeping communities across the country safe. They are more important than ever."²

Given these facts from the National Rural Health

Association, Jockey and Encompass decided to create a program to say thank you to those on the front lines at rural hospitals. It is their hope that the rural hospital community will find some comfort, some value and some reassurance that they are appreciated for all they do. For example, they partnered with Vizient, a healthcare performance improvement company that represents more than half of the acute care hospitals in the country, including many rural hospitals. More than 90 of Vizient's member rural hospitals expressed interest in the program over a period of just three days. Additional Vizient hospitals have also requested the donated items, with many already receiving it.

Buy Scrubs Give Scrubs

BY DEANNA LEONARD

With great partners like Vizient, as well as others like Sonsiel, and e-Sagacity – the team was quickly able to identify rural hospitals in need. Rural hospitals make a difference for families, individuals, and communities and have cared for those who are fragile, ill and in need.

Becky Ries from Valley County Health System in Nebraska said, "We would like to extend our thanks for the scrubs that are being shipped to our hospital. During these difficult times especially, generosity such as this helps to lift spirits and support our workers who are on the front lines helping to care for patients each and every day! Thank you for giving back in such a kind, thoughtful and generous way... we are beyond grateful!"

Hospitals and employees like these inspire Jockey and Encompass Group in so many ways. By donating over 20,000 scrubs to rural hospitals across the United States, it is Jockey and Encompass's small way of saying thank you. Thank you for the dedication during unprecedented times, thank you for the tireless energy, and most of all thank you for choosing to work in rural communities and caring for those who need it most.

1. Jockey.com 2. NRHA blog articles



**By
Donating
over
20,000
Scrubs**



**to rural hospitals across the United States, it
is Jockey & Encompass's small way of saying**

Thank You.





6116 UNISEX 40" COAT



6119 UNISEX 30" COAT

Length	40" Long Coat
Sizes	XXS-4X
Fabric	65/35 Performance Poplin 5.2 oz. sq/yd
4 Pockets	<ul style="list-style-type: none">• 1 Inside Pocket• Hand Access Slits• 2-Piece Back Swing Belt

Length	30" Consult Coat
Sizes	XXS-3X
Fabric	65/35 Fine Line Twill 5.5 oz. sq/yd
7 Pockets	<ul style="list-style-type: none">• Outside Lower Patch Pocket has Concealed Inside Pocket• 2 Inside Pockets• 2 Oversized Lower Pockets to Hold iPad® Each• Pen Divider on Chest Pocket



15103 MEN'S 30" COAT



15104 WOMEN'S 28" COAT



Length	30" Consult Coat
Sizes	XS-3X
Fabric	65/35 Poplin with Soil Release 5.2 oz. sq/yd
3 Pockets	<ul style="list-style-type: none">• 2-Piece Back and Sleeves• 3 Roomy Outside Pockets

Length	28" Consult Coat
Sizes	XXS-3X
Fabric	65/35 Poplin with Soil Release 5.2 oz. sq/yd
3 Pockets	<ul style="list-style-type: none">• 1-Piece Back and Sleeves• 3 Roomy Outside Pockets



11653 UNISEX 40" COAT



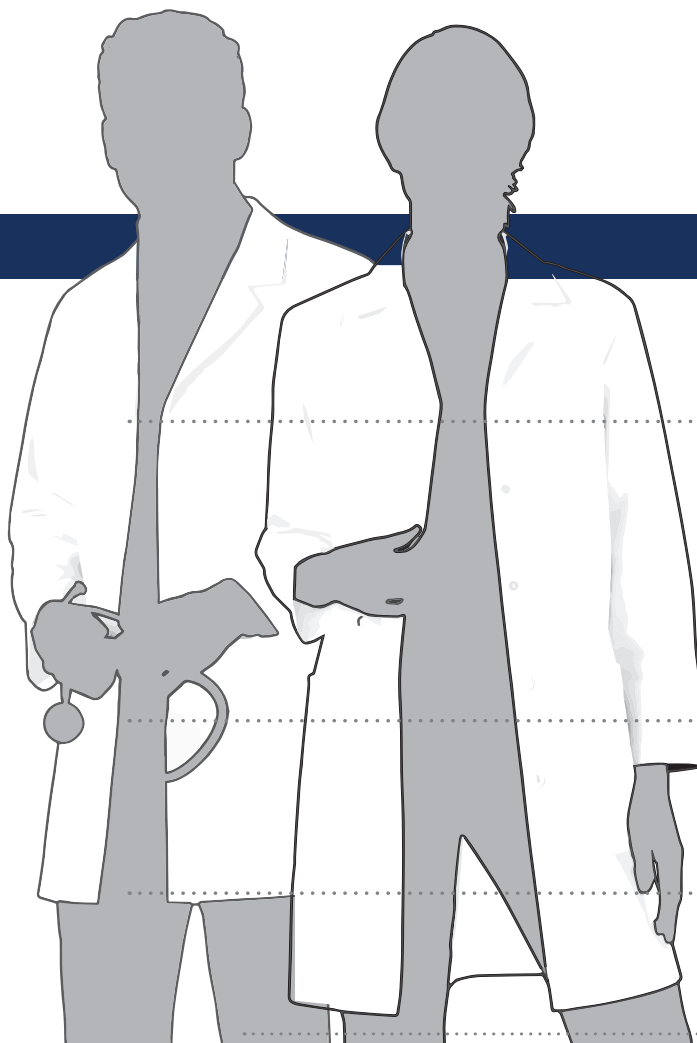
808 UNISEX 44" COAT



Length	40" Fluid Resistant Long Coat
Sizes	XS-3X
Fabric	99% Air Textured Polyester 1% Carbon Fiber (Carbon Fiber Shows as Pin Striping)
3 Pockets	<ul style="list-style-type: none">• Fluid Resistant Button Closure at Neck for Full Coverage• Deep Back Vent for Lap Coverage when Seated Back Pleat for Extra Movement Knit Cuffs

Length	44" Heavyweight Long Coat
Sizes	32-54
Fabric	100% Heavyweight Cotton 8.6 oz per sq/yd
5 Pockets	<ul style="list-style-type: none">• 5 French Knotted Buttons• 5 Pockets• 2 Lower Front Pockets, 2 Inside pockets And Pen Divider on Chest Pocket• 2 Piece Back Belt Partially Sewn Down• Hand Access Slits with Decorative Detail• Kick Pleat

size chart



BUST/
CHEST

WAIST/
CONSULT

MID
LENGTH

LONG

MEN'S META SIZE CHART

MEN'S	XS	S	M	L	XL	2X	3X	4X	5X
CHEST	30-32	34-36	38-40	42-44	46-48	50-52	54-56	58-60	62-64
WAIST	24-26	28-30	32-34	36-38	40-42	44-46	48-50	52-54	56-58

UNISEX SIZE CHART

SIZE	XXS	XS	S	M	L	XL	2X	3X	4X
MEN'S	26-28	30-32	34-36	38-40	42-44	46-48	50-52	54-56	58-60
WOMEN'S	0-2	4-6	8-10	12-14	16-18	20w	22w-24w	26w-28w	30w-32w

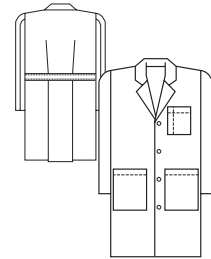
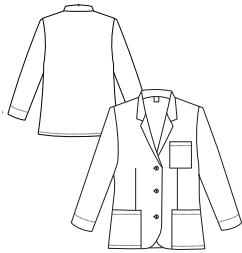
WOMEN'S META SIZE CHART

WOMEN'S	XXS	XS	S	M	L	XL	2X	3X	4X
SIZE	0-2	4-6	8-10	12-14	16-18	20-40 20-20W	42-44 22W-24W	46-48 26W-28W	50-52 30W-32W
BUST	31-32	33-34	35-36	37½-39	40½-42½	44½-46½	48½-50½	52½-54½	56½-58½
WAIST	22-23	24-25	26-27	28½-30	31½-33½	35½ - 37½	39½-41½	43½-45½	47½-49½
HIPS	32½-33½	34½-35½	36½-37½	39-40½	42-44	46 - 48	50-52	54-56	58-60

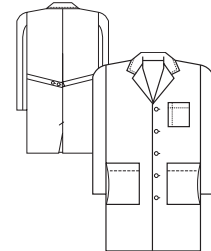
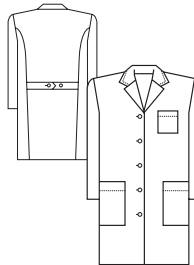
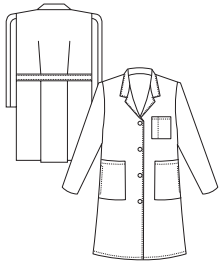


META® LABWEAR

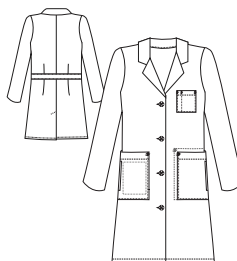
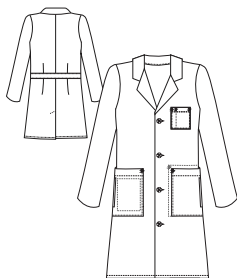
META FOR LIFE



STYLE	738	739	1963
LENGTH	Women's 28" Consult Coat	Men's 30" Consult Coat	Men's 38" Long Coat
SIZES	0-20, 40-48, 8T-20T	34-56, 38L-56L	32-60, 38L-56L
FABRIC	65/35 Fine Line Twill 5.5 oz/sq yd	65/35 Fine Line Twill 5.5 oz/sq yd	65/35 Fine Line Twill 5.5 oz/sq yd
POCKETS	7	7	6



STYLE	1964	161	267
LENGTH	Women's 37" Long Coat	Women's 37" Long Coat	Men's 40" Long Coat
SIZES	0-20, 40-48, 8T-20T	0-20	34-48
FABRIC	80/20 Super Blend Twill 5.0 oz/sq yd	65/35 Performance Poplin 5.2 oz/sq yd	65/35 Performance Poplin 5.2 oz/sq yd
POCKETS	6	5	5

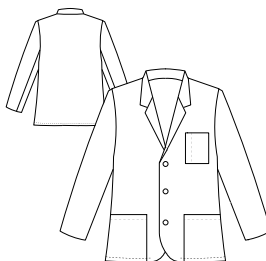
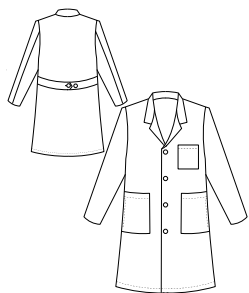


STYLE	762	763	808
LENGTH	Men's 40" Knot Button Long Coat	Women's 38" Knot Button Long Coat	Unisex 44" Long Coat
SIZES	32-48	0-20	32-54
FABRIC	100% Easy Care Cotton Twill 6.7 oz. sq/yd	100% Easy Care Cotton Twill 6.7 oz. sq/yd	100% Heavyweight Cotton 8.6 oz sq/yd
POCKETS	5	5	5

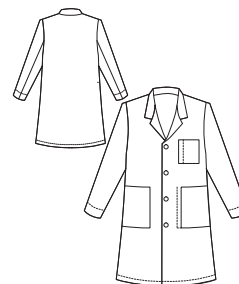
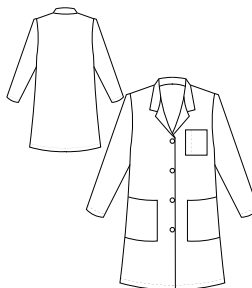


META® LABWEAR

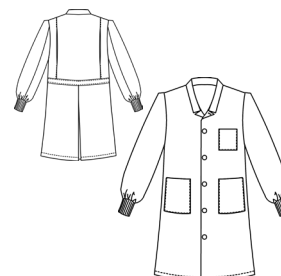
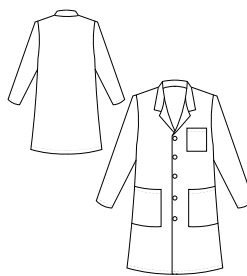
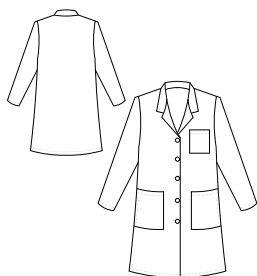
META FOR LIFE



STYLE	6116	6119	15103
LENGTH	Unisex 40" Long Coat	Unisex 30" Consult Coat	Men's 30" Consult Coat
SIZES	XXS-4X	XXS-3X	XS-3X
FABRIC	65/35 Performance Poplin 5.2 oz/sq yd	65/35 Fine Line Twill 5.2 oz/sq yd	65/35 Poplin with Soil Release 5.2 oz/sq yd
POCKETS	4	7	3



STYLE	15104	15000	15007
LENGTH	Women's 28" Consult Coat	Women's 33" Mid-Length Coat	Men's 34" Mid-Length Coat
SIZES	XXS-3X	XXS-3X	S-3X
FABRIC	65/35 Poplin with Soil Release 5.2 oz/sq yd	65/35 Poplin with Soil Release 5.2 oz/sq yd	65/35 Poplin with Soil Release 5.2 oz/sq yd
POCKETS	3	3	3



STYLE	15113	15112	11653
LENGTH	Women's 37" Long Coat	Men's 38" Long Coat	Unisex 40" Long Coat
SIZES	XXS-4X	XS-5X	XS-3X
FABRIC	65/35 Poplin with Soil Release 5.2 oz/sq yd	65/35 Poplin with Soil Release 5.2 oz/sq yd	99% Air Textured Polyester 1% Carbon Fiber
POCKETS	3	3	3

Products described in this catalog are made from imported fabrics.



CUSTOMIZE IT!

Let Us Add a Professional Finish by Adding Your Logo, Name or Department to Make Your Group Uniquely Individual. Our Logo Digitization and Embroidery Will Make Group One® Your One-Stop Uniform Program!



If you are looking to build a turn-key staff identification program for your team, contact us today to learn more!



Encompass Group | 615 Macon Street, McDonough GA 30253 | 800.284.4540 | www.encompassgroup.com

© 2021 Encompass Group LLC All Rights Reserved. Lit # HC21741